

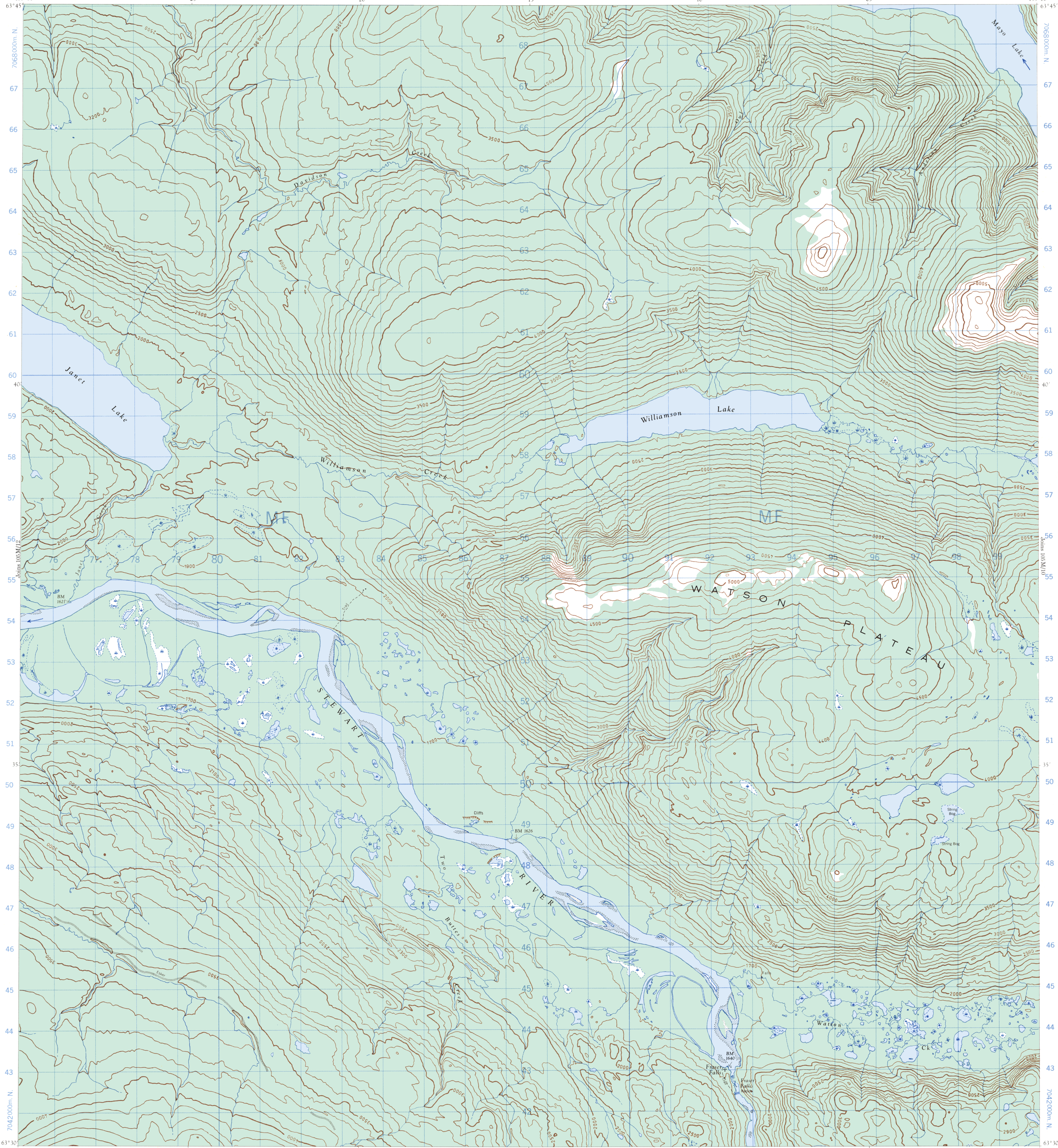
PROVISIONAL MAP

105 M/11
135°30' 476000m. E. 77 78 79 25' 80 81 82 1:50,000 83 20' 84 85 86 87 Joins 105M/14 15' 89 90 91 10' 92 93 94 95 05' 97 98 499000m. E. 135°00' 105 M/11

CANADA

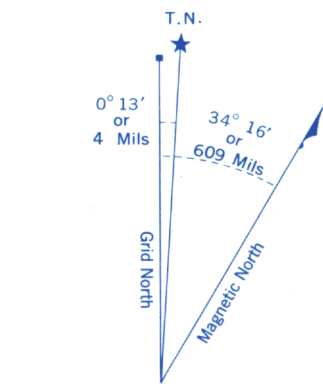
EDITION 1

CARTE PROVISOIRE



Refer to
this map as:

105 M/11
EDITION 1MCE
SERIES A 722



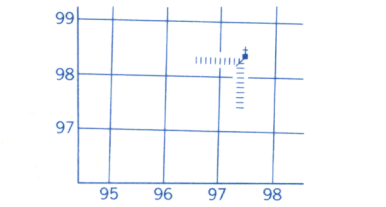
Use diagram only to obtain numerical values.
APPROXIMATE MEAN DECLINATION 1965
FOR CENTRE OF MAP
Annual change decreasing 4.4"

ONE THOUSAND METRE
UNIVERSAL TRANSVERSE MERCATOR GRID

GRID ZONE DESIGNATION	100,000 M. SQUARE IDENTIFICATION
8V	MF

5

EXAMPLE OF METHOD USED
TO GIVE A REFERENCE TO NEAREST 100 METRES
THE FOLLOWING GRID REFERENCE IS A SAMPLE ONLY
AND DOES NOT REFER TO A POINT ON THIS MAP



REFERENCE POINT	CHURCH	(as above)
EASTING: Read number on grid line immediately to left of point	97	
Estimate tenths of a square from this line eastward to point	5	975
NORTHING: Read number on grid line immediately below point	98	
Estimate tenths of a square from this line northward to point	4	984

EXAMPLE MILITARY GRID REFERENCE 975984
Nearest similar grid reference 100,000 metres (about 63 miles)

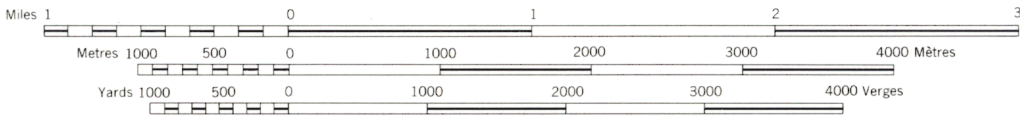
ZONE 8

Produced, 1966, by the SURVEYS AND MAPPING BRANCH,
DEPARTMENT OF ENERGY, MINES AND RESOURCES,
from aerial photographs taken in 1949 and 1953. Field surveys 1961 and
1964. Printed 1966.
Copies may be obtained from the Map Distribution Office,
Department of Energy, Mines and Resources, Ottawa.

Établie en 1966, par la DIRECTION DES LEVÉS ET DE LA CARTOGRAPHIE,
MINISTÈRE DE L'ÉNERGIE, DES MINES ET DES RESSOURCES, d'après des
photographies aériennes prises en 1949 et 1953. Levés sur le terrain en 1961 et 1964.
Imprimée en 1966.
Ces cartes sont en vente au Bureau de distribution des cartes,
ministère de l'Énergie, des Mines et des Ressources, Ottawa.

WILLIAMSON LAKE
YUKON TERRITORY

SCALE 1:50,000 ÉCHELLE



CONTOUR INTERVAL 100 FEET
Elevations in Feet above Mean Sea Level
North American Datum 1927
Transverse Mercator Projection

Some names on this map are not yet official.
Corrections or additions are invited by the
Surveys and Mapping Branch.

This Provisional Map is equivalent to a standard
map in accuracy of content.

ÉQUIDISTANCE DES COURBES: 100 PIEDS
Élévations en pieds au dessus du niveau moyen de la mer
Niveau de référence nord américain 1927
Projection transverse de Mercator

Certains noms inscrits sur cette carte ne sont
pas encore officiels. La Direction des levés et
de la cartographie saurait gré au public de lui
signaler corrections et additions.

Cette carte provisoire est l'équivalente d'une
carte régulière au point de vue précision de
l'information.

105 M/11
EDITION 1