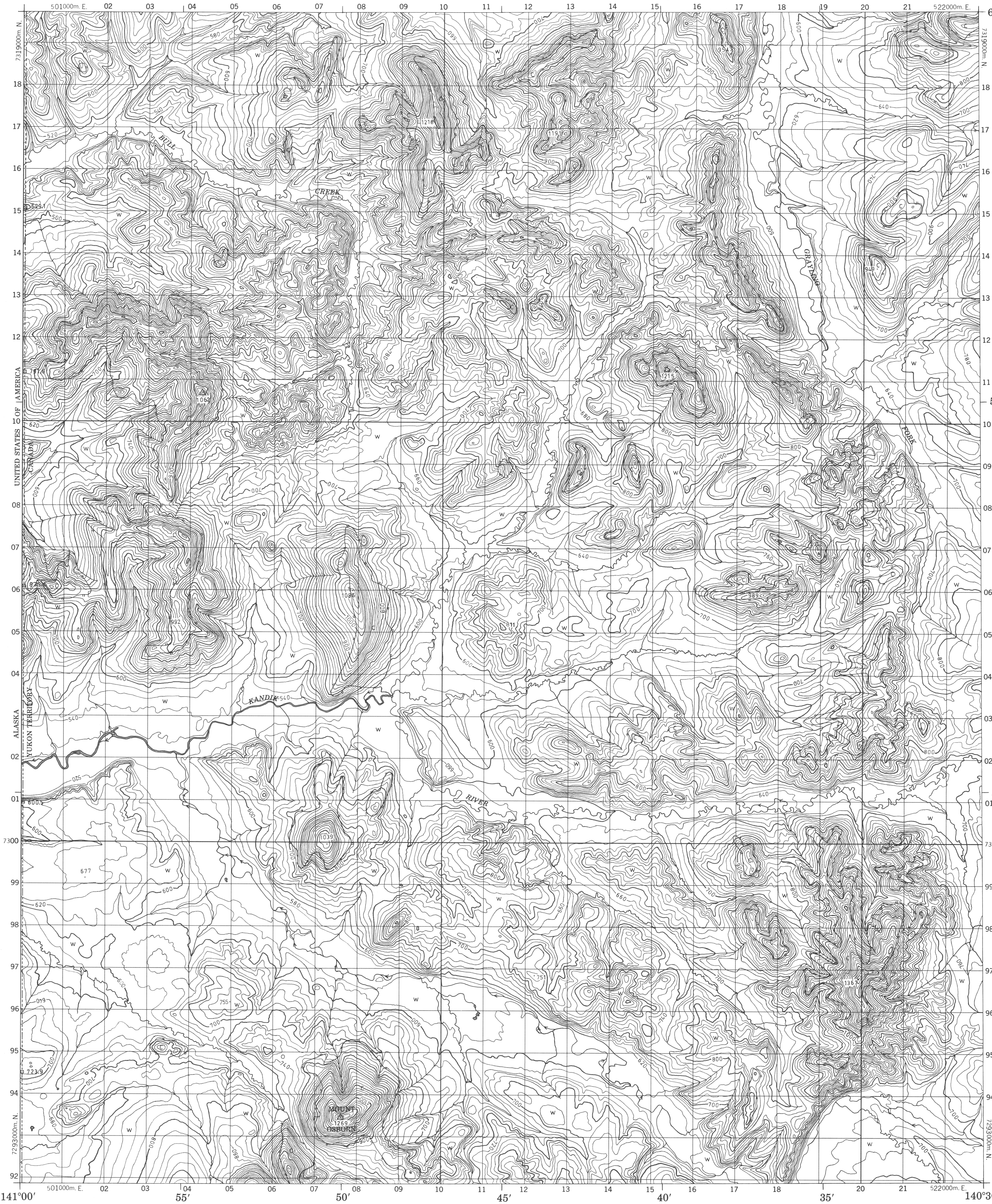


CANADA

(1984) EDITION 1 116 F/15

Military users, refer to this map as: Réf rence de la carte pour usage militaire: S rie A 701 MAP 116 F/15 CART  EDITION 1 MCE EDITION



ROADS AND RELATED FEATURES

HARD SURFACE, ALL WEATHER

LOOSE SURFACE

CART TRACK, WINTER ROAD

TRAIL, CUT LINE, PORTAGE

BUILT-UP AREA

RAILWAY, SIDING, STATION, STOP

BRIDGE

SEAPLANE BASE, ANCHORAGE

LANDMARK FEATURES

HOUSE, BARN

CHURCH, SCHOOL

POST OFFICE

HISTORICAL SITE

TOWERS: FIRE, RADIO

WELL: OIL, GAS

TANK: OIL, GASOLINE, WATER

TELEPHONE LINE

POWER TRANSMISSION LINE

MINE

CUTTING, EMBANKMENT

GRAVEL PIT

BOUNDARIES AND SURVEY CONTROL

INTERNATIONAL, PROVINCIAL, BOUNDARY MONUMENT

COUNTY, DISTRICT

TOWNSHIP, PARISH-SURVEYED

TOWNSHIP, DLS - SURVEYED

MUNICIPALITY

INDIAN RESERVE, PARK, ETC

HORIZONTAL SURVEY POINT

BENCH MARK WITH ELEVATION

SPOT ELEVATION, PRECISE: LAND, WATER

DRAINAGE AND RELATED FEATURES

STREAM, SHORELINE: INDEFINITE

DIRECTION OF FLOW

LAKE, INTERMITTENT LAKE

FLOODED LAND

MARSH, SWAMP (WOODED)

DRY RIVER BED WITH CHANNELS

SAND: ABOVE, IN WATER

STRING BOG

TUNDRA: PONDS, POLYGONS

RAPIDS, FALLS, RAPIDS

FORESHORE FLATS

ROCK

DAM

WHARF

DITCH

RELIEF FEATURES

CONTOURS

APPROXIMATE CONTOURS

DEPRESSION CONTOUR

SPOT ELEVATION, APPROXIMATE: LAND, WATER

ESKER

PINGO

SAND, SAND DUNES

PALSA BOG

WOODED AREA

CLEARED AREA

LEGEND - L G NDE

ROUTES ET OUVRAGES CONNEXES

SURFACE PAV E, TOUTES SAISONS

GRAVIER

CHEMIN DE TERRE, D'HIVER

SENTIER, PERC E, PORTAGE

AGGLOM RATION

CHEMIN DE FER, VOIE D' VITEMENT, GARE, ARR T

PONT

HYDRO ROPORT, MOULAGE

POINTS DE REP RE

MAISON, GRANGE

 GLISE,  COLE

BUREAU DE POSTE

LIEU HISTORIQUE

TOURS: FEU, RADIO

PUITS: P TROLE, GAZ

R SERVOIR: P TROLE, ESSENCE, EAU

LIGNE T L PHONE

LIGNE DE TRANSPORT D' NERGIE

MINE

D BLAI, REMBLAI

GRAVIER 

FRONTI RES ET POINTS DE R F RENCES

INTERNATIONALE, PROVINCIALE, BORNE FRONTI RE

COMT , DISTRICT

CANTON, PAROISSE - ARPENT E

TOWNSHIP, ATC-ARPENT E, NON ARPENT  

MUNICIPALIT 

R SERVE INDIENNE, PARC, ETC

REP RE PLANIM TRIQUE

REP RE DE NIVELLEMENT AVEC COTE

POINT COT , PR CIS: SUR TERRE, SUR L'EAU

DRAINAGE ET OUVRAGES CONNEXES

COURS D'EAU, RIVE, IMPR CIS 

DIRECTION DU COURANT

LAC, LAC INTERMITTENT

TERRAIN INOND 

MARAIS, MAR CAGE (BOIS )

LIT DE COURS D'EAU TARI AVEC CHENAUX

SABLE: AU DESSUS, DANS L'EAU

MAR CAGE EN ENFILADE

TOUNDRA:  TANGS, SOLS POLYGONAUX

RAPIDES, CHUTES, RAPIDES

ESTRANS

ROCHE

BARRAGE

QUAI

FOSS 

RELIEF

COURBES DE NIVEAU

COURBES DE NIVEAU APPROXIMATIVES

COURBE DE CUVETTE

POINT COT , APPROXIMATIF: SUR TERRE, SUR L'EAU

ESKER

PINGO

SABLE, DUNES

PALSE

R GION BOIS E

R GION DEBOIS E

PHOTOGRAPHY

PHOTOGRAPHIE

COMPILED

RESTITUTION

GRID ZONE DESIGNATION

IDENTIFICATION DE LA ZONE DU QUADRILLAGE

7 W

ED

EC

5

73

REVISION

REVISION

EXAMPLE OF METHOD USED TO GIVE A REFERENCE TO NEAREST 100 METRES

EXEMPLE DE LA M THODE EMPLOY E POUR FIXER DES REP RES   100 M TRES PR S

99

98

97

95

96

97

98

REFERENCE POINT

POINT DE REP RE

CHURCH -  GLISE

as above (as above)

EASTING: Read number on grid line immediately to left of point.

LONGITUDE EST: Note le chiffre de la ligne du quadrillage imm diatement   gauche du rep re.

Estimate tenths of a square from this line eastward to point.

Estimer le nombre de dixi mes du carr  entre cette ligne et le rep re en direction est.

NORTHING: Read number on grid line immediately below point.

LATITUDE NORD: Note le chiffre de la ligne du quadrillage imm diatement en-dessous du rep re.

Estimate tenths of a square from this line northward to point.

Estimer le nombre de dixi mes du carr  entre cette ligne et le rep re en direction nord.

GRID REFERENCE SAMPLE

EXEMPLE DU QUADRILLAGE

975064

Nearest similar grid reference 100,000 metres (about 62 miles)

La prochaine r f rence similaire est   100,000 m tres (environ 62 milles)

U.S.A.	116 K/2	116 K/1
U.S.A.	116 F/15	116 F/16
U.S.A.	116 F/10	116 F/9

Coordinate Conversion: NAD 27 to NAD 83 (NGS 84)
Mean Values for this Map
Geographic: Latitude - subtract 0.9" Longitude - add 0.0" Grid: Northing - add 162m Easting - subtract 113m

Conversion des coordonn es: NAD 27   NAD 83 (NGS 84)
Valeurs moyennes pour cette carte
Coordonn es g ographiques: Latitude - soustraire 0.9" Longitude - ajouter 0.0" Quadrillage: Ordonn e (N) - ajouter 162m Abscisse (E) - soustraire 113m

CONVERSION SCALE FOR ELEVATIONS

 CHELLE DE CONVERSION DES  LEVATIONS

Metres 30 20 0 50 100 150 200 250 300

Feet 100 50 0 100 200 300 400 500 600 700 800 900 1000

Pieds

PRODUCED BY THE SURVEYS AND MAPPING BRANCH, DEPARTMENT OF ENERGY, MINES AND RESOURCES, OTTAWA, 1978. INFORMATION CURRENT AS OF 1981.
  CANADA. COPYRIGHTS RESERVED 1978.

THIS MAP WAS COMPALED WITH SATELLITE IMAGERY OBTAINED IN 1980 AND FOUND TO BE UP-TO-DATE IN ALL MAJOR FEATURES.

ELEVATIONS IN METRES ABOVE MEAN SEA LEVEL
CONTOUR INTERVAL..... 20 METRES

NORTH AMERICAN DATUM 1927
TRANSVERSE MERCATOR PROJECTION

MOUNT OSBORN

YUKON TERRITORY-ALASKA

Scale 1:50,000  chelle

Miles 1 0 1 2 3

Metres 1000 0 1000 2000 3000 4000

Yards 1000 0 1000 2000 3000 4000

Verges

 LEVATIONS EN M TRES AU-DESSUS DU NIVEAU MOYEN DE LA MER
 QUIDISTANCE DES COURBES 20 M TRES

SYST ME DE R F RENCE G OD SIQUE NORD-AM RICAIN 1927
PROJECTION TRANSVERSE DE MERCATOR

 TABL  PAR LA DIRECTION DES LEVES ET DE LA CARTOGRAPHIE, MINIST RE DE L' NERGIE, DES MINES ET DES RESSOURCES, OTTAWA, EN 1978. R SEIGNEMENTS   JOUR EN 1981.

  CANADA 1978. TOUS DROITS R SERV S

ON   COMPAR  CETTE CARTE AUX IMAGES PRISES PAR SATELITE EN 1980. NOUS AVONS CONSTAT  QUE TOUTES SES CARACT RISTIQUES PRINCIPALES  TAIENT   JOUR.

MOUNT OSBORN
116 F/15
(1984) EDITION 1