

ROADS AND RELATED FEATURES

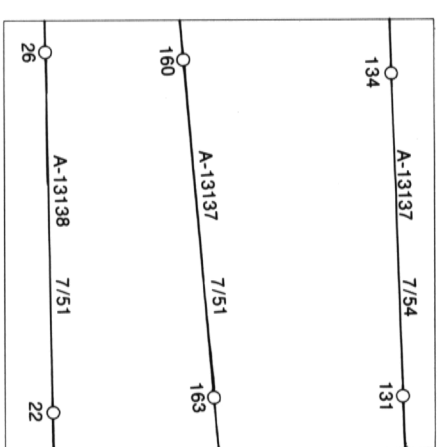
- HARD SURFACE, ALL WEATHER
- LOOSE SURFACE
- CART TRACK, WINTER ROAD
- TRAIL, CUT LINE, PORTAGE
- BUILT-UP AREA
- RAILWAY, SIDING, STATION, STOP
- BRIDGE
- SEAPLANE BASE, ANCHORAGE
- LANDMARK FEATURES
- HOUSE, BARN
- CHURCH, SCHOOL
- POST OFFICE
- HISTORICAL SITE
- TOWERS, FIRE, RADIO
- WELL, OIL, GAS
- TANK, OIL, GASOLINE, WATER
- TELEPHONE LINE
- POWER TRANSMISSION LINE
- MINE
- CUTTING, EMBANKMENT
- GRAVEL PIT
- BOUNDARIES AND SURVEY CONTROL
- INTERNATIONAL, PROVINCIAL, BOUNDARY MONUMENT
- COUNTY, DISTRICT
- TOWNSHIP, PARISH-SURVEYED
- TOWNSHIP, DLS - SURVEYED, UNSURVEYED
- SECTION CORNERS
- MUNICIPALITY
- INDIAN RESERVE, PARK, ETC
- HORIZONTAL SURVEY POINT
- BENCH MARK WITH ELEVATION
- SPOT ELEVATION, PRECISE, LAND, WATER
- DRAINAGE AND RELATED FEATURES
- STREAM, SHORELINE: INDEFINITE
- DIRECTION OF FLOW
- LAKE, INTERMITTENT LAKE
- FLOODED LAND
- MARSH, SWAMP (WOODED)
- DRY RIVER BED WITH CHANNELS
- SAND, ABOVE, IN WATER
- STRING BOG
- TUNDRA, PONDS, POLYGONS
- RAPIDS, FALLS, RAPIDS
- FORESHORE FLATS
- ROCK
- DAM
- WHARF
- DITCH
- RELIEF FEATURES
- CONTOURS
- APPROXIMATE CONTOURS
- DEPRESSION CONTOUR
- SPOT ELEVATION, APPROXIMATE, LAND, WATER
- ESKER
- PINGO
- SAND, SAND DUNES
- PALSA BOG
- WOODED AREA
- CLEARED AREA

LEGEND - L G NDE

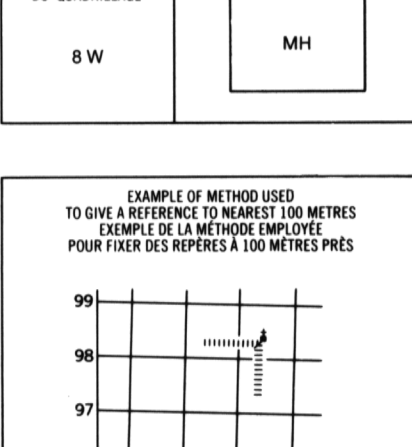
ROUTES ET OUVRAGES CONNEXES

- SURFACE PAV E, TOUTES SAISONS
- GRAVIER
- CH MIN DE TERRE, D'HIVER
- SENTIER, PERC E, PORTAGE
- AGGLOM RATION
- CH MIN DE FER, VOIE D' V TEMENT, GARE, ARR T
- PONT
- HYDRO ROPORT, MOUILLAGE
- POINTS DE REP RE
- MAISON, GRANGE
- EGLISE,  C LE
- BUREAU DE POSTE
- LIEU HISTORIQUE
- TOURS, FEU, RADIO
- PUITS, P TROLE, G Z
- R SERVOIR, P TROLE, ESSENCE, EAU
- LIGNE T L PHONIQUE
- LIGNE DE TRANSPORT D' NERGIE
- MINE
- DEBLAI, REMBLAI
- GRAVIER
- FRONTI RES ET POINTS DE R F RENCES
- INTERNATIONALE, PROVINCIALE, BORNE FRONTI RE
- COMTE, DISTRICT
- CANTON, PAROISSE - ARPENT E
- TOWNSHIP, ATC-ARPENT E, NON ARPENT E
- COINS DE SECTION
- MUNICIPALIT 
- R SERVE INDIENNE, PARC, ETC
- REP RE PLANIM TRIQUE
- REP RE DE NIVELLEMENT AVEC C TE
- POINT C T , PR CIS: SUR TERRE, SUR L'EAU
- DRAINAGE ET OUVRAGES CONNEXES
- COURS D'EAU, RIVE, IMPRECISE
- DIRECTION DU COURANT
- LAC, LAC INTERMITTENT
- TERRAIN INOND 
- MARAIS, MAR CAGE (BOIS )
- LIT DE COURS D'EAU TARI AVEC CHENAUX
- SABLE, AU DESSUS, DANS L'EAU
- MAR CAGE EN ENFILADE
- TOUNDRA:  TANGS, SOLS POLYGONAUX
- RAPIDES, CH TES, RAPIDES
- ESTRANS
- ROCHE
- BARRAGE
- QUAI
- FOSSE
- RELIEF
- COURBES DE NIVEAU
- COURBES DE NIVEAU APPROXIMATIVES
- COURBE DE CUVETTE
- POINT C T , APPROXIMATIF: SUR TERRE, SUR L'EAU
- ESKER
- PINGO
- SABLE, DUNES
- PALSE
- R GION BOIS E

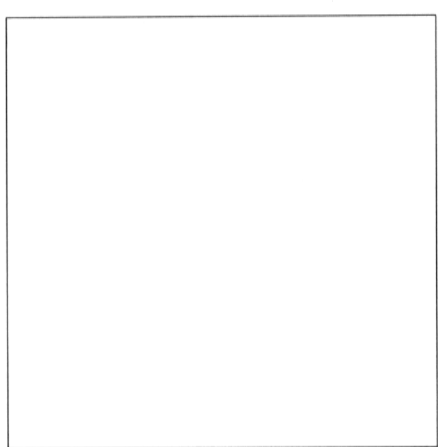
PHOTOGRAPHY PHOTOGRAPHIE



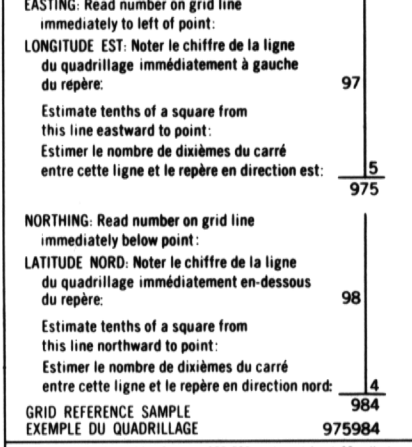
GRID ZONE DESIGNATION



REVISION



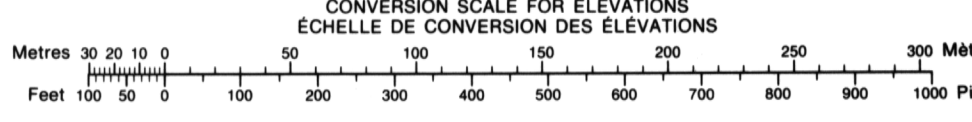
REVISION



116 H/6	116 H/7	116 H/8
116 H/3	116 H/2	116 H/1
116 A/14	116 A/15	116 A/16

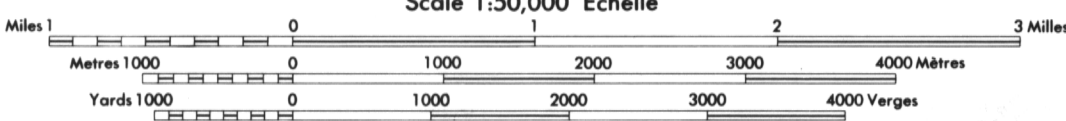
ONE THOUSAND METRE
UNIVERSAL TRANSVERSE MERCATOR GRID
ZONE 8
QUADRILLAGE DE MILLE M TRES
UNIVERSEL TRANSVERSE DE MERCATOR

The 1977 MAGNETIC BEARING is 38 02' (640 miles)
EAST OF GRID NORTH:
ANNUAL CHANGE DECREASING 2.4'
GRID NORTH is 1 35' (28 miles) WEST OF TRUE NORTH
for centre of map.
Le REP RE MAGN TIQUE en 1977 est   38 02' (640 miles)
EST DU NORD DU QUADRILLAGE.
VARIATION ANNUELLE D CROISSANTE 2.4'.
NORD DU QUADRILLAGE est 1 35' (28 miles)   l'ouest du
NORD G OGRAPHIQUE au centre de la carte.



PRODUCED BY THE SURVEYS AND MAPPING BRANCH,
DEPARTMENT OF ENERGY, MINES AND RESOURCES,
OTTAWA, 1978. INFORMATION CURRENT AS OF 1981.
COPIES MAY BE OBTAINED FROM THE CANADA MAP OFFICE
DEPARTMENT OF ENERGY, MINES AND RESOURCES, OTTAWA,
OR YOUR NEAREST MAP DEALER.
  1978 HER MAJESTY THE QUEEN IN RIGHT OF CANADA
DEPARTMENT OF ENERGY, MINES AND RESOURCES.
NORTH AMERICAN DATUM 1927
TRANSVERSE MERCATOR PROJECTION

INFORMATION CONCERNING LOCATION AND PRECISE
ELEVATION OF BENCH MARKS CAN BE OBTAINED BY
WRITING TO THE GEODETTIC SURVEY, SURVEYS AND
MAPPING BRANCH, OTTAWA.
THIS MAP WAS COMPARED WITH SATELLITE IMAGERY
OBTAINED IN 1980 AND FOUND TO BE UP-TO-DATE
WALL MAP FEATURES.



PAT LAKE
YUKON TERRITORY

ELEVATIONS IN M TRES AU-DESSUS DU NIVEAU MOYEN DE LA MER
EQUIDISTANCE DES COURBES 20 M TRES

SYST ME DE R F RENCE G O SIQUE NORD-AM RICAIN 1927
PROJECTION TRANSVERSE DE MERCATOR

ON PEUT OBTENIR DES R NSEIGNEMENTS SUR LE LIEU
ET L'ALTITUDE EXACTE DES REP RES DE NIVELLEMENT
EN  CRIVANT AUX LEVES G O SIQUES, DIRECTION DES
LEVES ET DE LA CARTOGRAPHIE, OTTAWA.

 TABL  PAR LA DIRECTION DES LEVES ET DE LA CARTO-
GRAPHIE, MINIST RE DE L' NERGIE, DES MINES ET DES RE-
SOURCES, OTTAWA, EN 1978. R NSEIGNEMENTS   JOUR EN 1981.
CES CARTES SONT EN VENTE AU BUREAU DES CARTES DU
CANADA, MINIST RE DE L' NERGIE, DES MINES ET DES RE-
SOURCES, OTTAWA, OU CHEZ LE VENDEUR LE PLUS PR S.
  1978 SA MAJEST  LA REINE DU CHEF DU CANADA,
MINIST RE DE L' NERGIE, DES MINES ET DES RESSOURCES.

ON A COMPAR  CETTE CARTE AUX IMAGES PRISES PAR SATEL-
LITE EN 1980; NOUS AVONS CONSTAT  QUE TOUTES SES
CARACT RISTIQUES PRINCIPALES  TAIENT   JOUR.