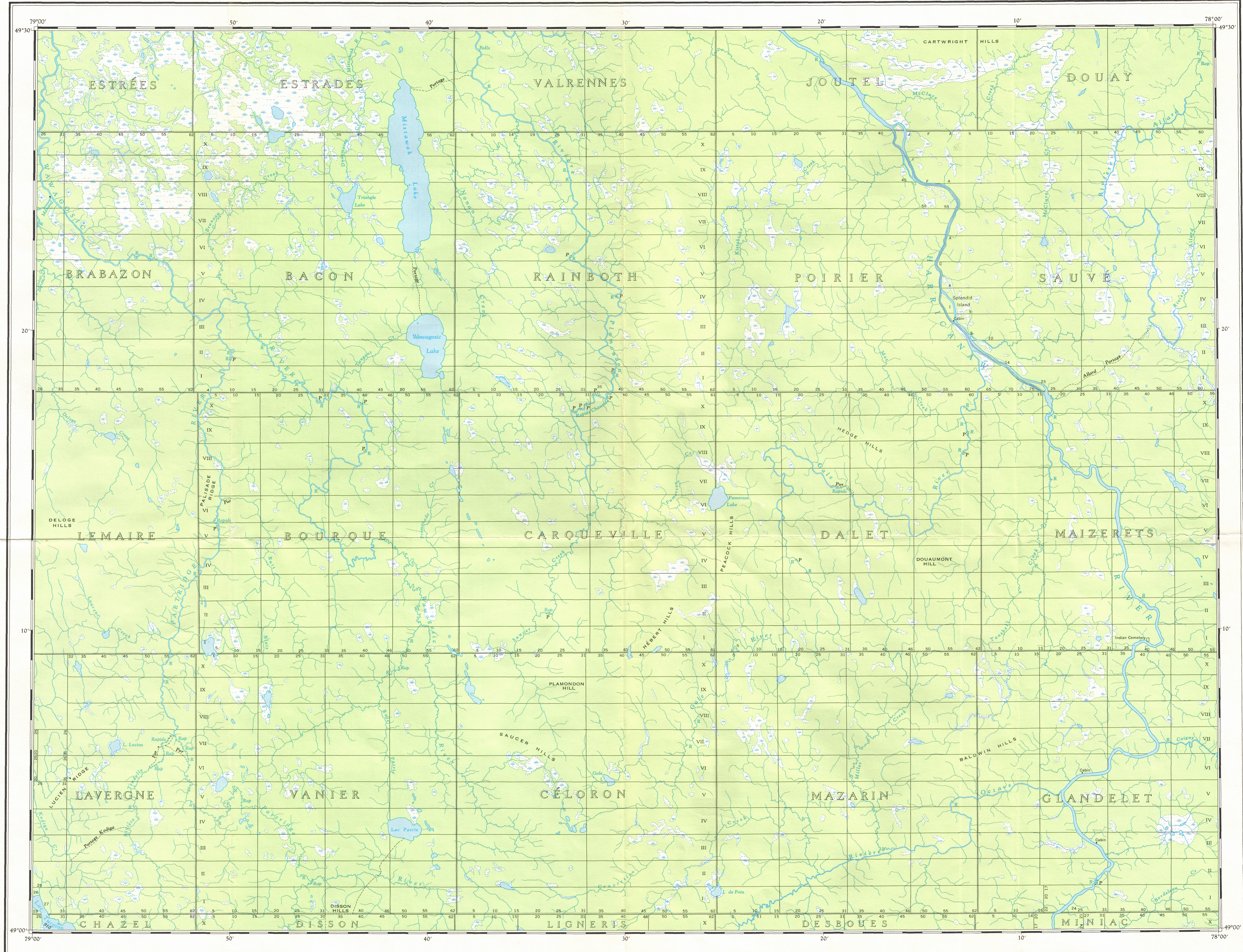
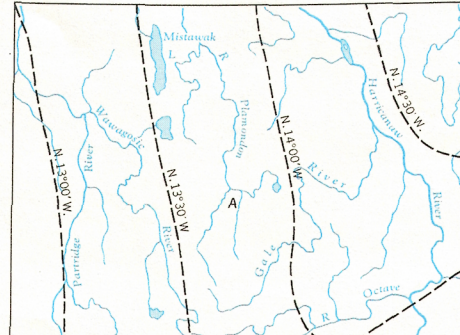


This document was produced
by scanning the original publication.
Ce document est le produit d'une
numérisation par balayage
de la publication originale.



THE DECLINATION OF THE COMPASS NEEDLE, 1955
DECLINAISON DE L'AIGUILLE MAGNETIQUE, 1955



The declination of the compass needle at any place along a broken line is the declination given on the broken line. At other places the declination is between those given on the neighbouring broken lines; thus at the place marked A the declination is between $N 13^{\circ} 30' W$ and $N 14^{\circ} 00' W$. The declination of the compass needle is decreasing $3\frac{1}{2}$ minutes annually.

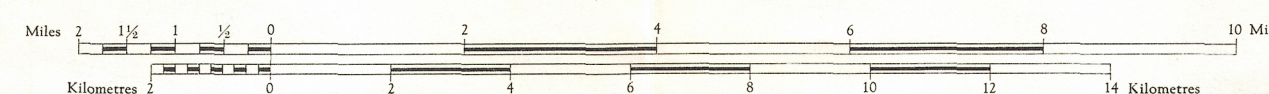
Produced and printed by the Surveys and Mapping Branch,
Department of Mines and Technical Surveys, 1956, from
base maps published in 1953.

REFERENCE
(LEGENDE)

Main highway with route number	Route principale avec son numéro	IX
Secondary road	Route secondaire	
Other roads	Autres chemins	
Trail or portage	Sentier ou portage	
Boundary: County	Limite de comté	
Boundary: Township surveyed	Limite de canton arpenté	
Boundary: Township unsurveyed	Limite de canton non-arpenté	
Surveyed line	Ligne arpentée	
Telephone line	Ligne téléphonique	
Concession number	Numéro de concession	45
Lot number	Numéro de lot	
Height in feet	Altitude en pieds	1455

MISTAWAK LAKE
QUEBEC
ABITIBI COUNTY

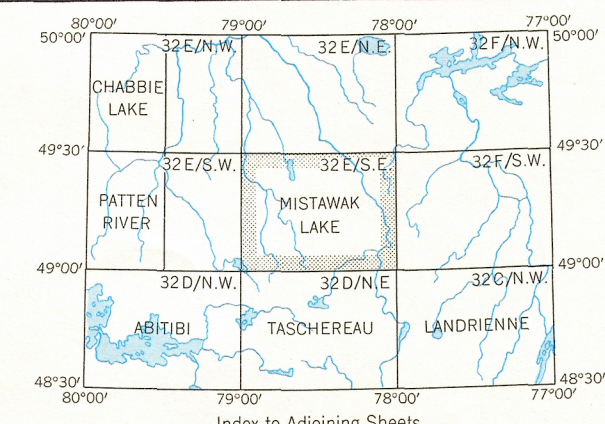
Scale 1:126,720 or 1 Inch = 2 Miles
Echelle 1:126,720 ou 1 Pouce = 2 Miles



PRELIMINARY MAP

REFERENCE
(LEGENDE)

Marsh	Marais	
Sand or gravel	Sable ou gravier	
Rapids and falls	Rapides et chutes	
Stream, position approx.	Cours d'eau, position approx.	
Woods	Bois	
Building	Bâtiment	
School	École	
Post office	Bureau de poste	
Lookout tower	Tour d'observation	
Ranger cabin	Poste de garde forestier	
Church	Eglise	
Cemetery	Cimetière	



Reprint
13.2.67

MISTAWAK LAKE
32 E/SE

32 E/SE