

Ce document est le produit d'une numérisation par balayage de la publication originale.

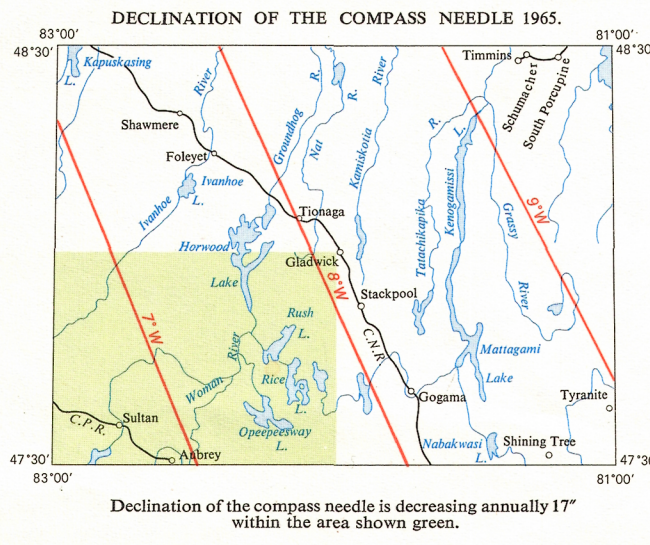
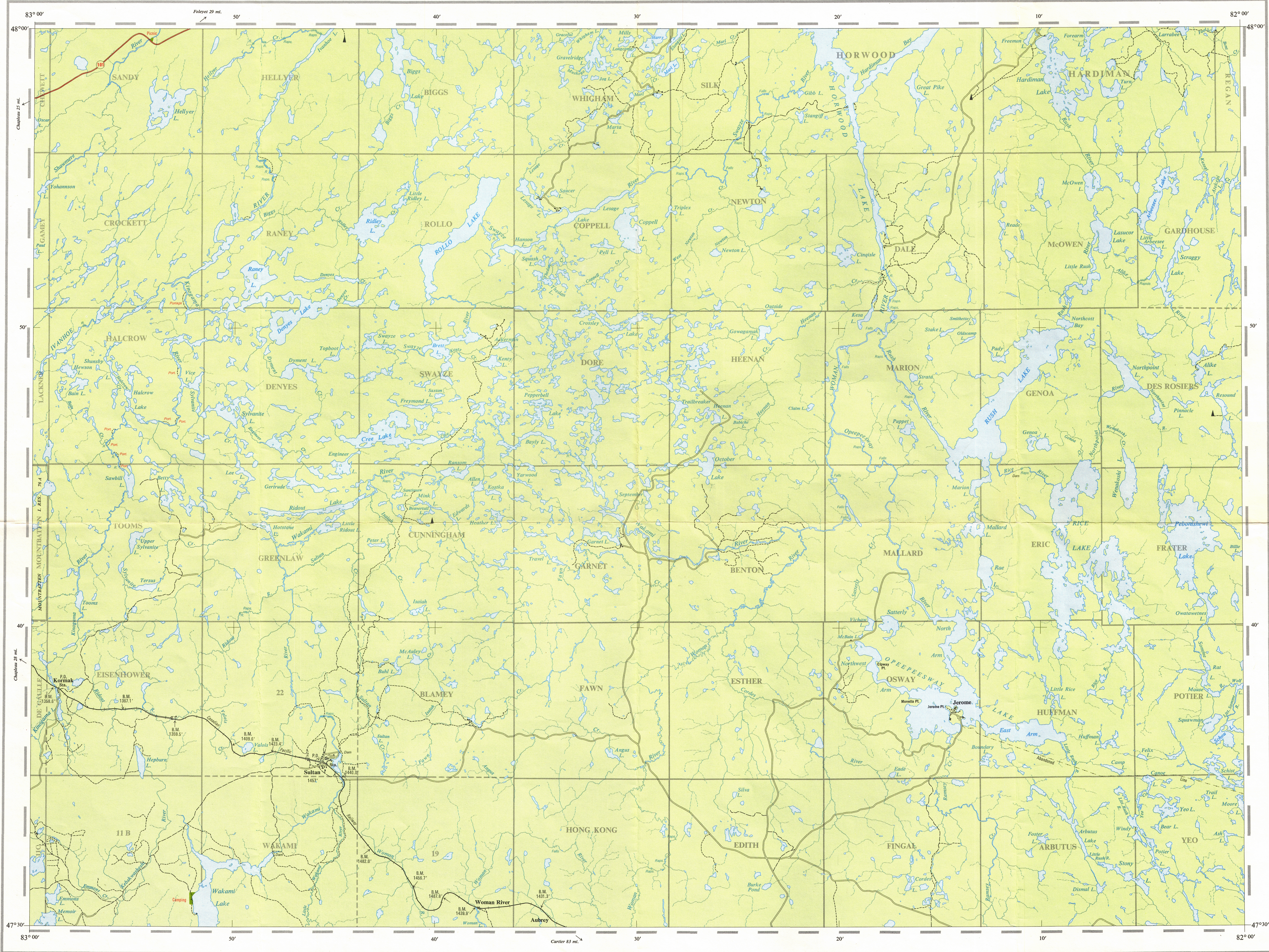
This document was produced by scanning the original publication.



PROVINCE OF ONTARIO
DEPARTMENT OF LANDS AND FORESTS

PROVINCIAL TOPOGRAPHIC SERIES

N.T.S. 410/NE

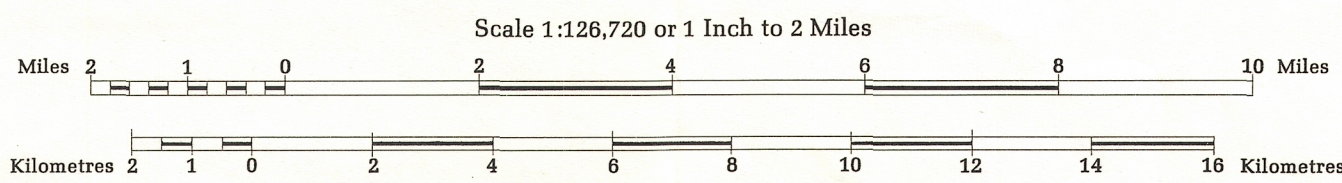


Ontario Forestry Resources Inventory Maps compiled from air photographs flown in 1963 were used for the base of this map. Revised to 1967.

Transverse Mercator Projection

Kings Highway	(10)
Secondary Highway	(44)
Other Road	
Earth Road; Trail or Portage	Sta.
Railway	
International Boundary	
Provincial Boundary	
County or District Boundary	
Township Boundary	
Park Boundary	
Reserve Boundary	
Building	
Post Office	P.O.
Lookout Tower	

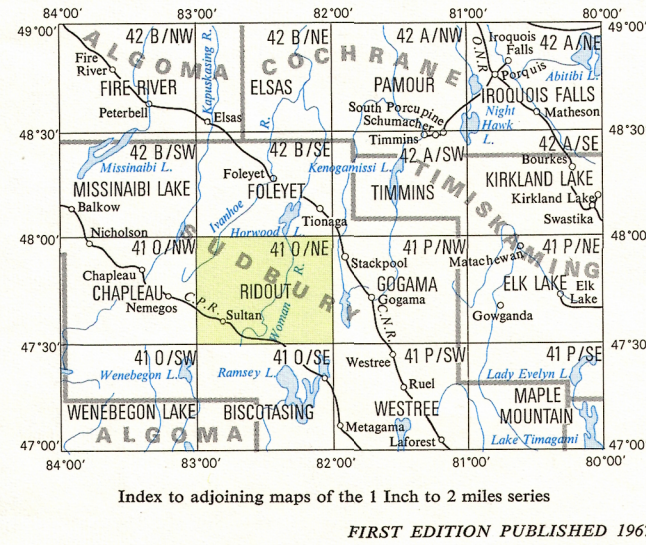
RIDOUT
ONTARIO



For Department of Lands and Forests administrative purposes, the area covered by this map is within the Districts of Chapleau and Gogama with District Foresters' Offices located at Chapleau and Gogama.

Cartography by LANDS AND SURVEYS BRANCH, ONTARIO DEPARTMENT OF LANDS AND FORESTS, Parliament Building, Toronto, from which additional copies of this map may be obtained.

Power transmission line
Electric generating station
Natural gas pipeline
Elevation in feet
Horizontal control point
Radio, V.H.F. station
Intermittent stream
Marsh or Swamp
Inundated land
Picnic site
Camping site
Airfield
Suspense base



FIRST EDITION PUBLISHED 1967