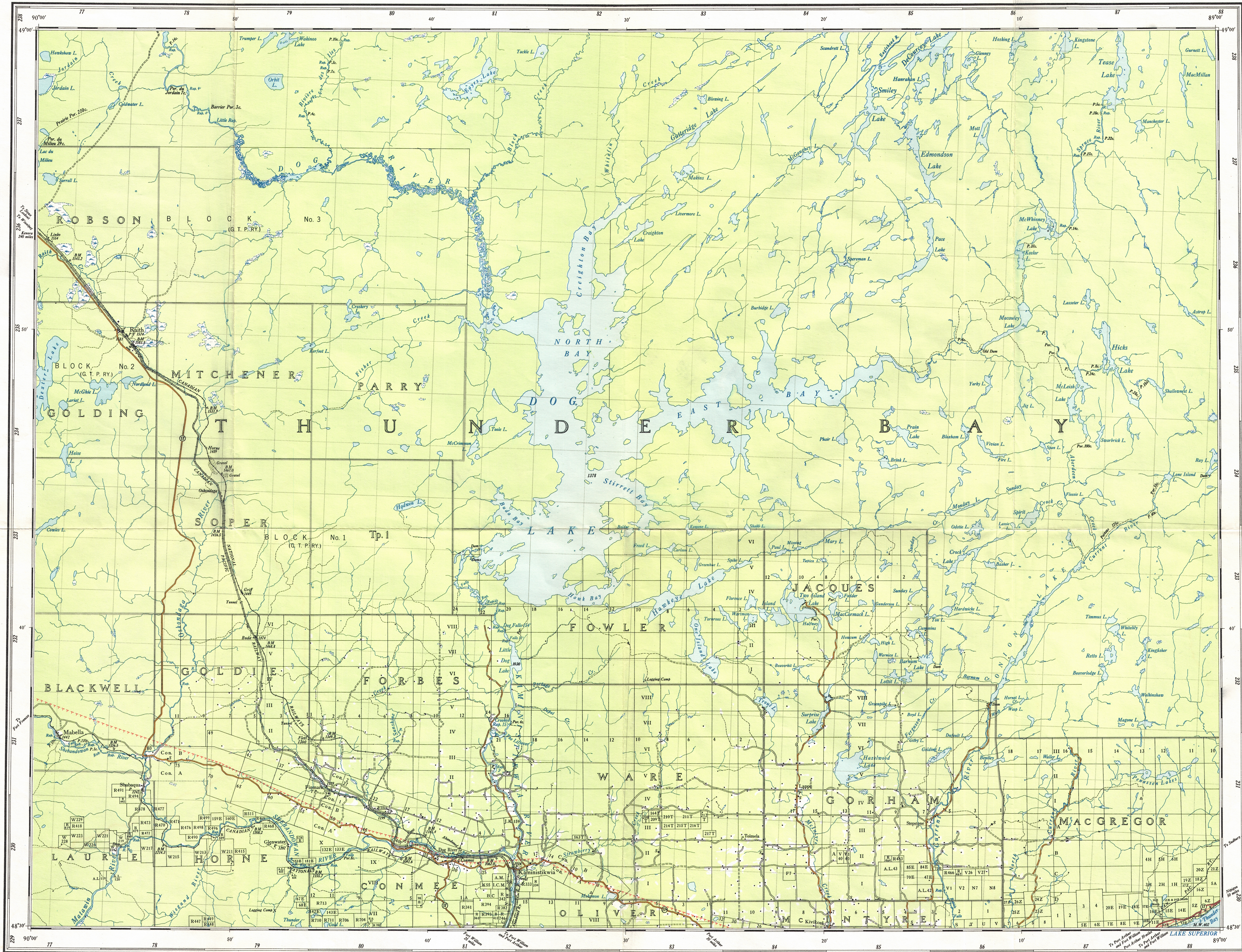


52 A/NW

This document was produced
by scanning the original publication.

Ce document est le produit d'une
numérisation par balayage
de la publication originale.



PRODUCED IN COOPERATION WITH THE SURVEYS BRANCH,
DEPARTMENT OF LANDS AND FORESTS, ONTARIO

(Fort William-Port Arthur 52 s.w.)

KAMINISTIKWIA

ONTARIO
(PROVISIONAL EDITION)

Scale 2 miles to 1 inch or 1:126,720

Miles 2 1 1/2 0 1 2 3 4 5 6 7 8 9 10 Miles

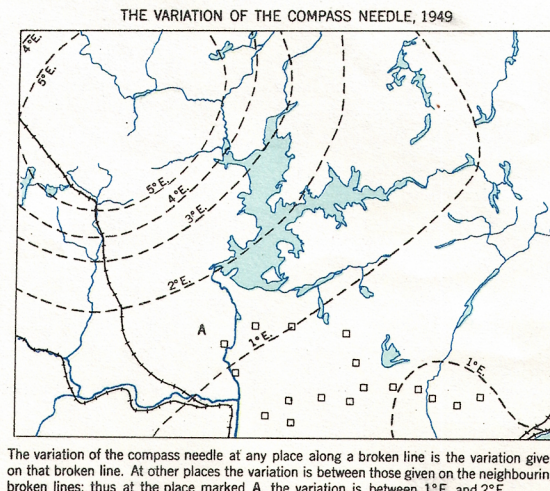
NOTE: The grid squares provide a ready method of referring to or locating features. They are four miles in a side and subdivided into quarters by dotted lines. The east and west sides of the squares are not true north and south lines, but have a deflection to the east varying from 7° 30' on the west side of the map to 2° 15' on the east side. Any square is identified by the numbers along its outer border, for example: W 211 L 1 will be found in the northwest quarter of square 211-1.

Price 25 cents

Copies may be obtained from the Map Distribution
Office, Department of Mines and Resources, Ottawa.

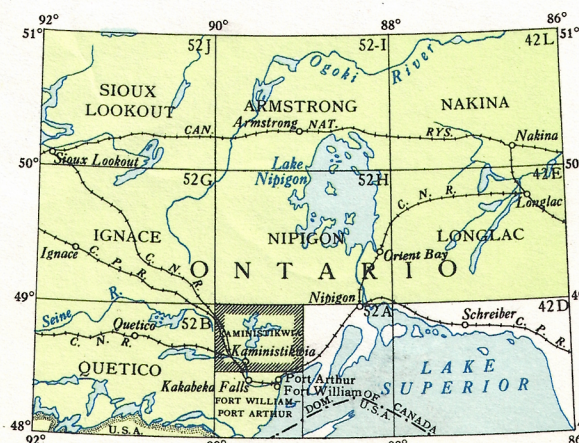
Compiled, drawn and printed at the office of the SURVEYOR GENERAL
AND CHIEF, HYDROGRAPHIC SERVICE, Ottawa, 1959.

Produced from surveys by the Department of Lands and Forests, Ontario, and
from aerial photographs by the Royal Canadian Air Force. Geographical positions and elevations (datum mean sea level) based on data
furnished by the Geodetic Service of Canada.
Reprinted with corrections 1969.



REFERENCE	
Railway: steam, double track
..... steam, single track
Main highway (wide)
Secondary highway (narrow)
Other motor road
Wagon road
Single road, trail or path
Township boundary
Surveyed line
Marsh, bog or open muskeg
Woods
Rapids and falls with drop in feet and portage in chains
Shed, sand or gravel
Highway route number

REFERENCE	
Depth contour in fathoms
Electric power line on steel towers
Concession number
Lot number
Building
Post office
School
Rock or reef
Geodetic triangulation station
Geodetic bench mark
Height in feet



NOTE: On the above index the sheets published are shown tinted green.