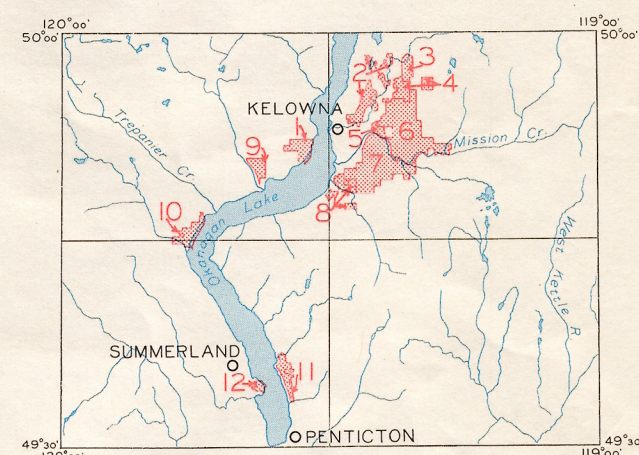
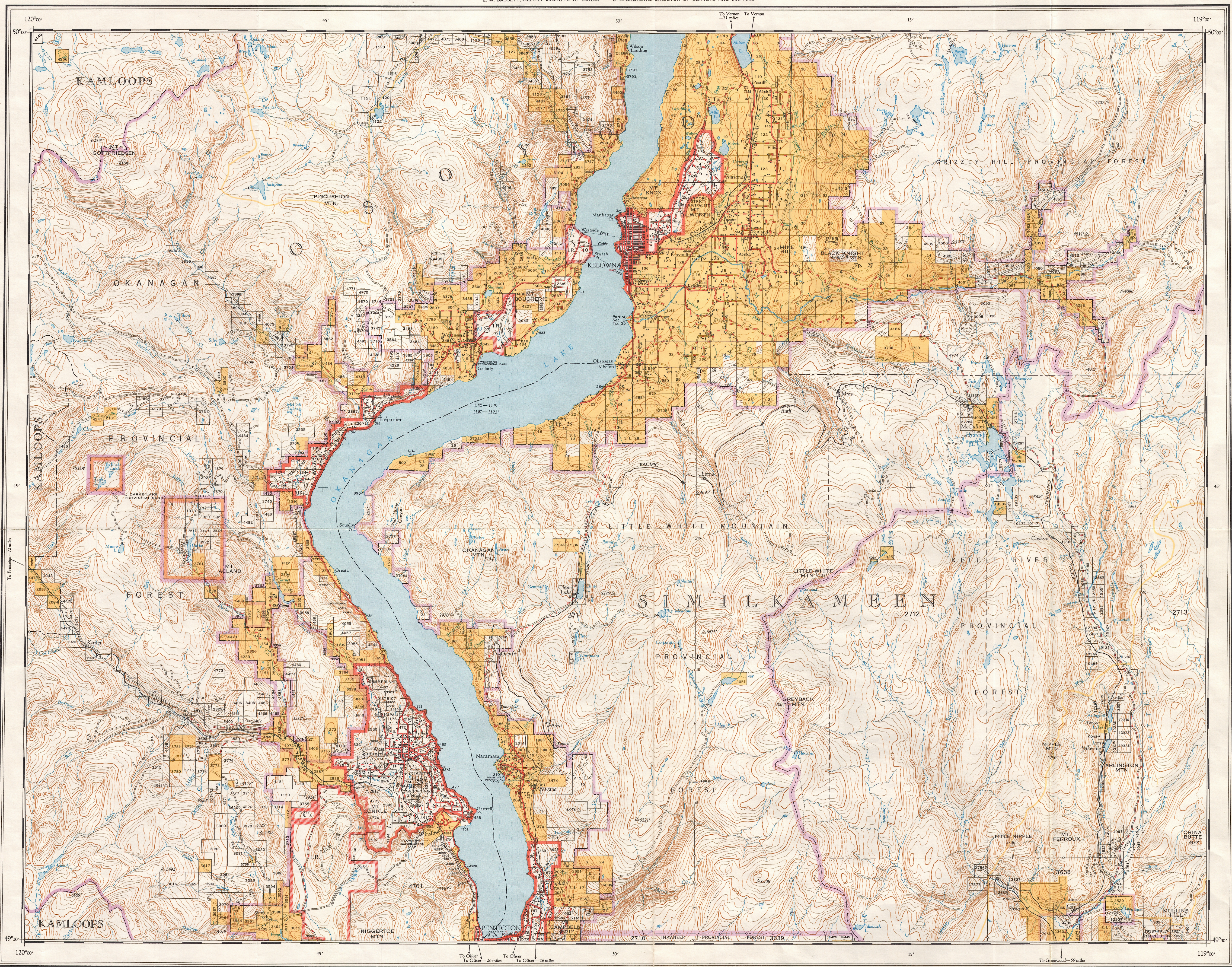


Ce document est le produit d'une numérisation par balayage de la publication originale.

This document was produced by scanning the original publication.

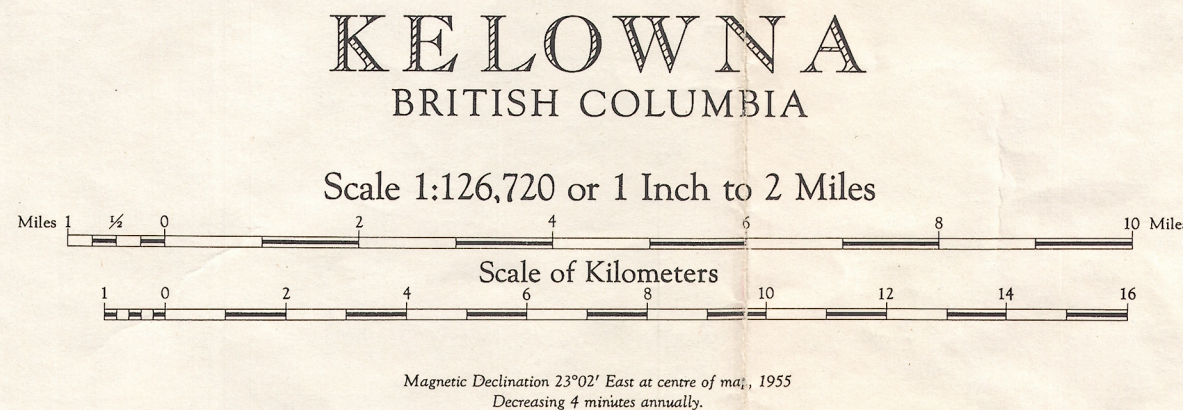


- IRRIGATION DISTRICTS — Within Map Area
1. Lakeview Irrigation District
 2. Glenmore Irrigation District
 3. Ellison Irrigation District
 4. Soory Creek Irrigation District
 5. Bone Davis Irrigation District
 6. Black Mountain Irrigation District
 7. South East Kelowna Irrigation District
 8. Okanagan Mission Irrigation District
 9. Wankarem Irrigation District
 10. Peachland Irrigation District
 11. Nesamund Irrigation District
 12. Trout Creek Irrigation District

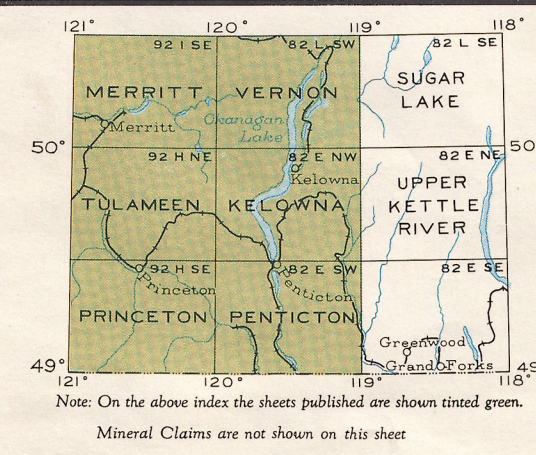
Surveyed by Photo Topography, 1944-50. Produced by the Survey and Mapping Branch, Department of Lands and Forests, British Columbia, 1954-55, from Air Photos by B. C. Government, 1951-53, and Plans from various sources.

- ADMINISTRATION
- DIVISIONS, DISTRICTS, AND OFFICES COVERING MAP AREA
- MINING DIVISIONS AND OFFICES
- Vernon — Gold Commissioner, Vernon
 - Sub-Recorder, Kelowna
 - Osoyoos — Gold Commissioner, Penticton
 - Sub-Recorder, Kelowna
 - Sub-Recorder, Oliver
 - Greenwood — Gold Commissioner, Grand Forks
 - Sub-Recorder, Beaverdam
- LAND RECORDING DISTRICT AND OFFICES
- Kamloops — Kamloops
 - Osoyoos — Vernon
 - Similkameen — Penticton
- GOVERNMENT AGENT — Kelowna, Penticton

- LANDS ALLOTTED OR COVERED BY APPLICATIONS UNDER THE LAND ACT
- Surveyed Timber Lease or License
 - Indian Reserve
 - Government Reserve
 - Land District Boundary
 - Forest Management License
 - Park Boundary
 - Provincial Forest Boundary
 - Municipality
 - Forest Service Lookout
 - Post Office
 - School
 - Church
 - Building
 - Hospital
 - Cemetery
 - Historic Monument



- REFERENCE
- Road, Hard Surface, All Weather
 - Road, Loose Surface, All Weather
 - Road, Loose Surface, Less than 2 Lanes
 - Trail
 - Telephone Line
 - Electric Power Line
 - Horizontal Control Station
 - Contours (Interval 100 feet)
 - Elevation in feet above mean sea-level
 - Intermittent Stream
 - Swamp or Marsh
 - Dam
 - Water Tank
 - Saw Mill
 - Mill Race
 - Mine
 - Gravel Pit
 - Customs Office



KELOWNA, B. C.
SHEET 82 E/NW
FIRST EDITION

82 E/NW