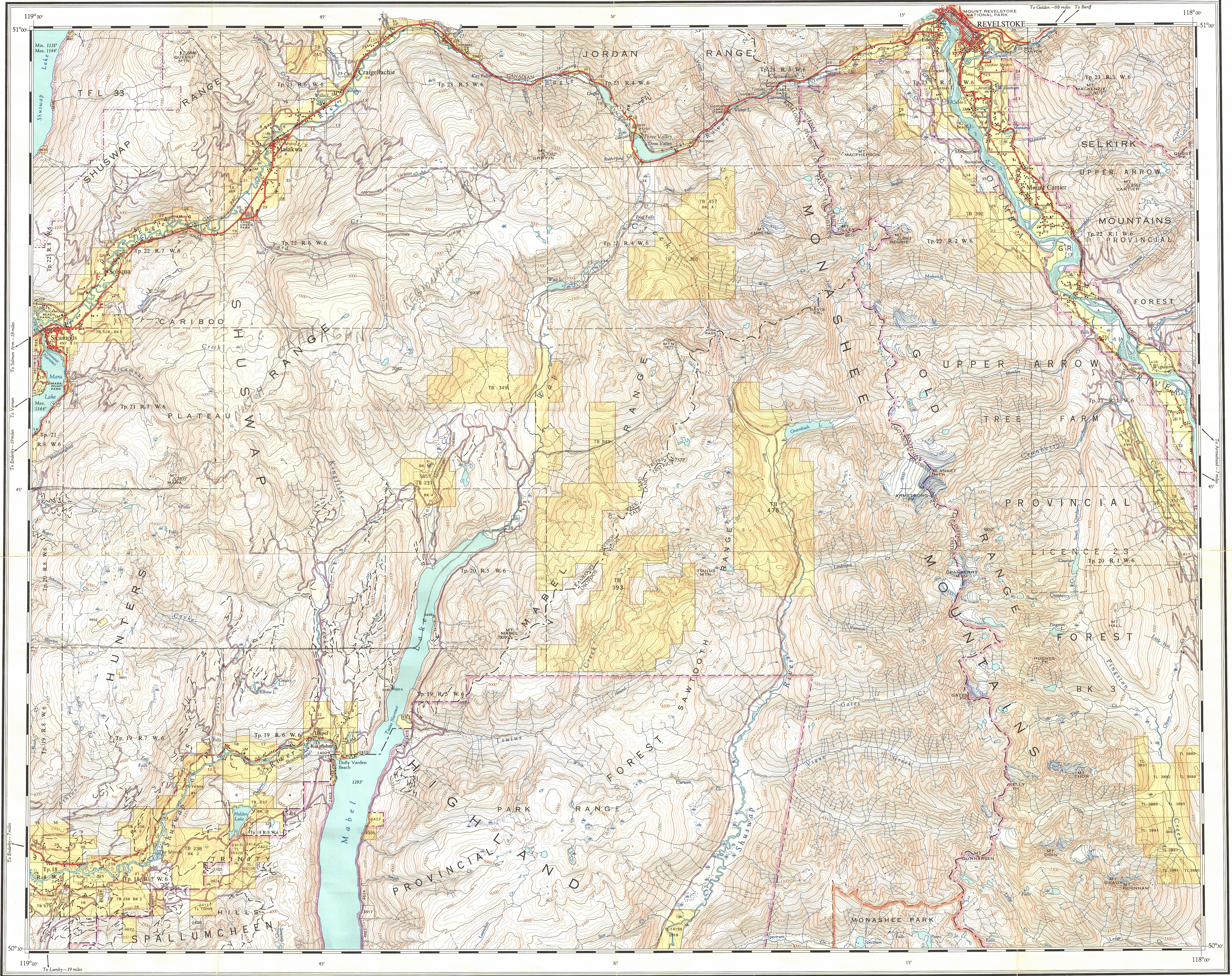
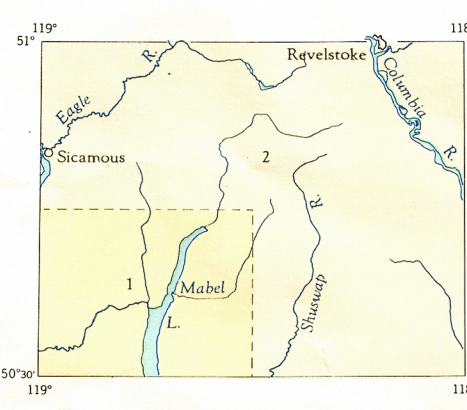


Ce document est le produit d'une numérisation par balayage de la publication originale.

This document was produced by scanning the original publication.



First Status Edition, compiled and produced by Geographic Division, Surveys and Mapping Branch, Department of Lands, Forests, and Water Resources, Victoria, B.C. 1964-65.



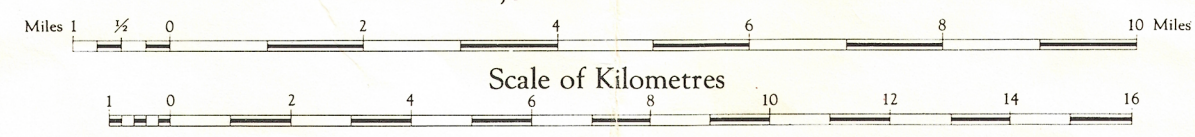
1. Planimetry and contours compiled from Provincial Government topographical surveys mapping, 1958. B.C. air photos 1958-59.
2. Planimetry compiled from Provincial Government air surveys interim mapping, 1952-54. B.C. air photos 1951, 1954-60.
Contours compiled from mapping by Dept. of Mines and Technical Surveys, Ottawa, 1953-60.
Culture revised from 1963-64 B.C. air photos.

REFERENCE

Land alienated or covered by application under the Land Act
Surveyed Timber License, License, or Berth
Indian Reserve
Government Reserve
Land District Boundary
Provincial Forest Boundary
Tree Farm License
Municipality
Water Supply Area
Park less than 7 acres
Campsite or Picnic Site
Force Service Lookout
Post Office
School
Church
Hospital
Building
Cemetery
Mine
Dike
Historic Monument
Mile Post
International Boundary and Monument

REVELSTOKE
BRITISH COLUMBIA

Scale 1:126,720 or 1 Inch to 2 Miles



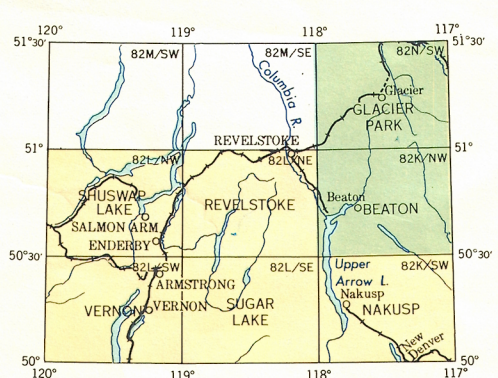
Magnetic Declination approximately 23°00' East at centre of sheet, 1965.
Decreasing approximately 2°18' annually
W. R. YOUNG, CHIEF GEOGRAPHER

Copies of this map may be obtained from Geographic Division, Surveys and Mapping Branch, Department of Lands, Forests, and Water Resources, Victoria, B.C.

REFERENCE

Road, Hard Surface, All Weather
Loose Surface, All Weather
Loose Surface, Less than 2 lanes
Four Wheel Drive
Trail
Railway
Abandoned Railway
Main Telephone Line
Main Electric Power Line
Horizontal Control Station
Contours (Interval 100 feet)
Elevation in feet above mean sea-level
Intermittent Stream
Intermittent Lake or Seasonal Inundation
Swamp or Marsh
Clearcut or logpile
Spring
Dam
Water Gauge
Water Tank
Saw Mill
Gravel Pit
Custom Office
Navigation Light

Universal Transverse Mercator Projection



On the above map index the maps published are shown that:
With District for land status
Without
Government Agent is at Revelstoke
Mineral Claims are not shown on this sheet.