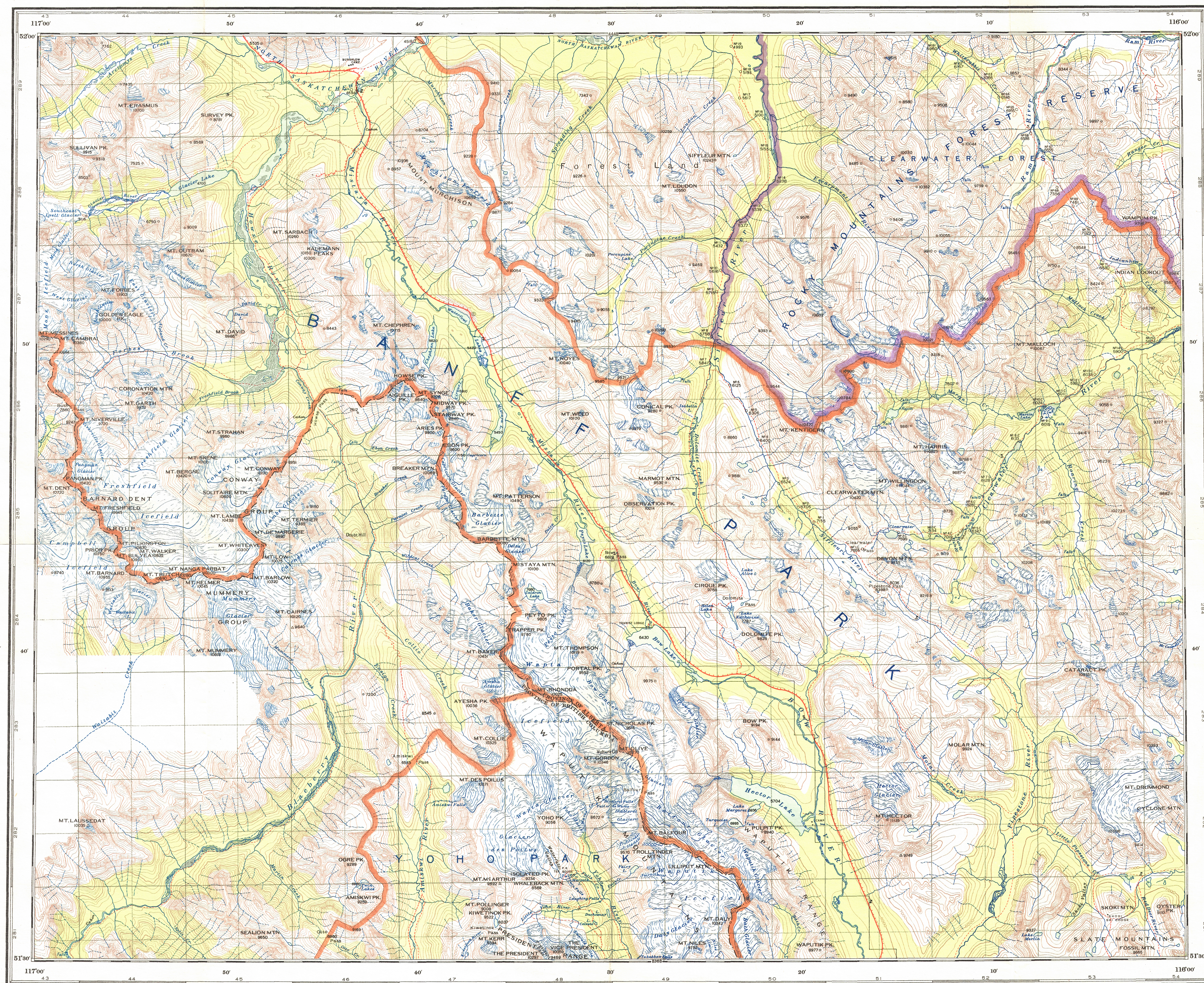
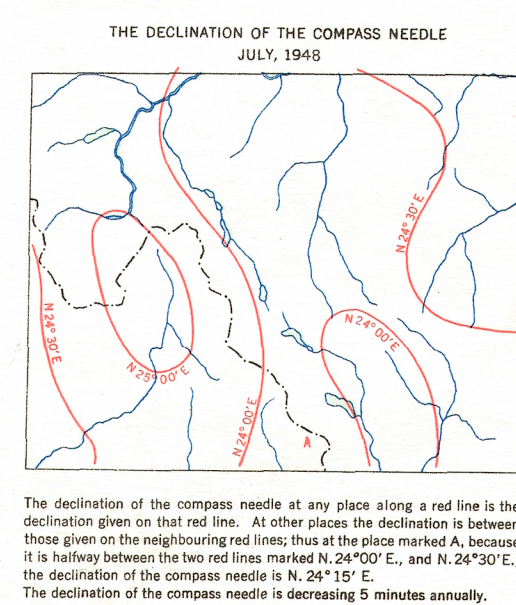


82 N/NE



This document was produced
by scanning the original publication.
Ce document est le produit d'une
numérisation par balayage
de la publication originale.



Reference

Boundary: provincial	—
park	—
forest reserve	—
Surveyed line	—
Pack trail or path	—
Telephone line	—
Non-perennial stream	—
Falls or rapids with drop in feet	—
Marsh, bog or open muskeg	—
Woods	—
Sand or gravel	—
Road	—

Miles 2 1 1/4 0 2 4 6 8 10 Miles

MISTAYA

BRITISH COLUMBIA AND ALBERTA

Scale 2 miles to 1 inch or 1:126,720

Contour interval 200 feet
Datum is mean sea level

NOTE: The grid squares provide a ready method of referring to or locating features. They are four miles by side and subdivided into quarters by dotted lines. The east and west sides of the squares are not all true north and south lines, but have a deflection to the west varying from four north on the east side of the map to 0°47' on the west side. Any square is identified by the numbers appearing along its outer border, for example Mt. Erasmus will be found in the southwest quarter of square 44-289 and Mount Mtn. in the southwest quarter of square 52-283.

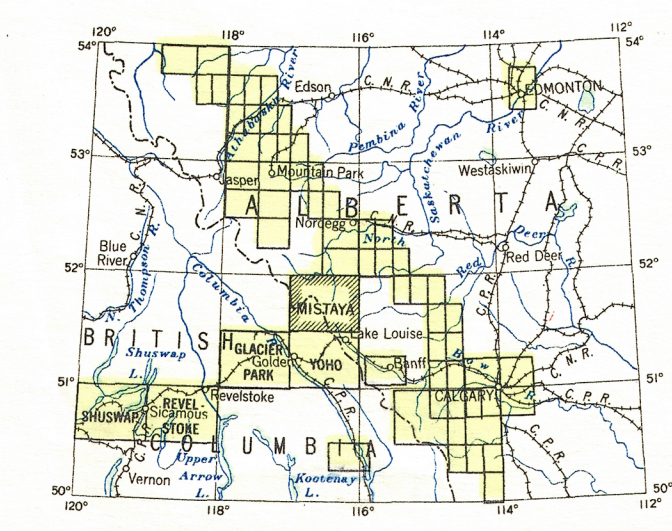
Price 25 cents

Copies may be obtained from the Map Distribution Office,
Department of Mines and Technical Surveys, Ottawa.

Compiled, drawn and printed at the office of the Surveyor General, 1931.
Reprinted with corrections at the Surveys and Mapping Branch, Ottawa, 1950.

Reference

Glacier	—
Contours and cliffs	—
Depression contour	—
Permanent survey monument	—
Traverse survey monument	—
Transposition station	—
Height in feet	—
Warden's cabin or forestry cabin with telephone	—
Warden's cabin or forestry cabin without telephone	—
Camp ground	—



NOTE: On the above index the sheets published are shown tinted green.