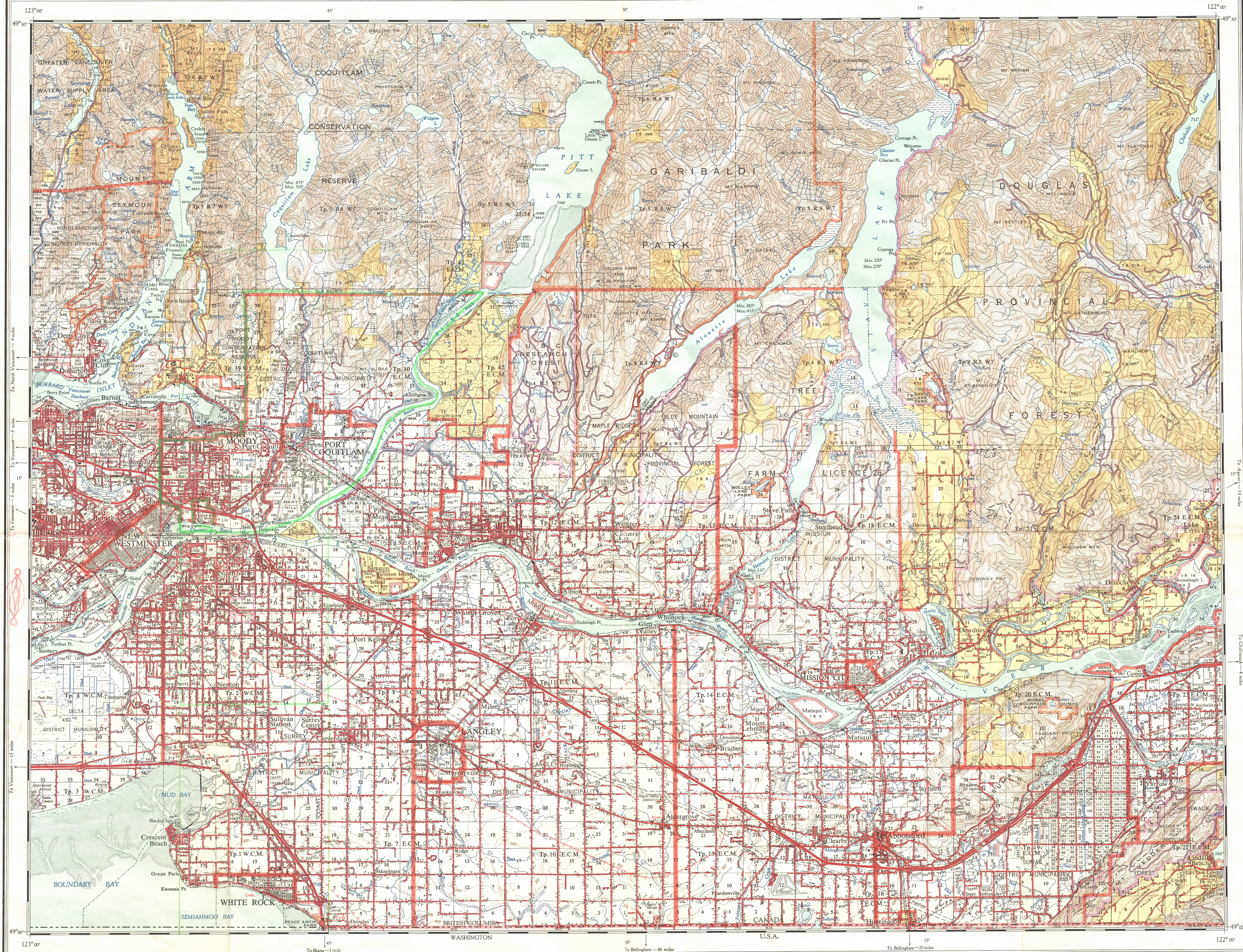
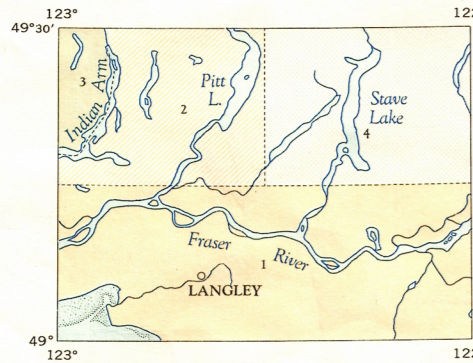


Ce document est le produit d'une numérisation par balayage de la publication originale.

This document was produced by scanning the original publication.



First Status Edition produced by Geographic Division, Surveys and Mapping Branch,
Dept. of Lands and Forests, Victoria, B.C. 1957. Air Photos by B.C. Government 1948-54.
Second status edition revised 1967.

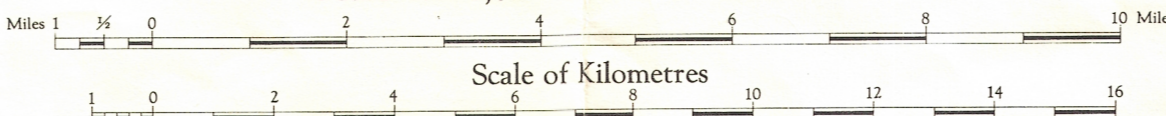


1. Planning and Control compiled from mapping by Dept. of Mines & Technical Surveys, Ottawa, 1956-58.
2. Planning and Control compiled from B.C. Prov. Gov. air survey maps, 1955.
3. Contours compiled from Prov. Gov. topographic surveys, 1954-57.
4. Contours compiled from mapping by Dept. of Mines & Technical Surveys, Ottawa, 1956.
5. Culture revised from B.C. air photos, 1963-66.

- Land alienated or covered by application under the Land Act
Surveyed Crown land in flooded areas
Surveyed land in flooded areas which had been alienated
Surveyed Timber Lease, Licence, or Berth
Indian Reserve
Government Reserve
Land District Boundary
Provincial Forest Boundary
Tree Farm Licence
Municipality
Water Supply Area
Park
Park less than 10 Acres
Campsite
Forest Service Lookout
Post Office
School
Church
Hospital
Building
Cemetery
Mine
Dike
Historic Monument
Mile Post

LANGLEY

BRITISH COLUMBIA
NEW WESTMINSTER LAND DISTRICT
Scale 1:126,720 or 1 Inch to 2 Miles



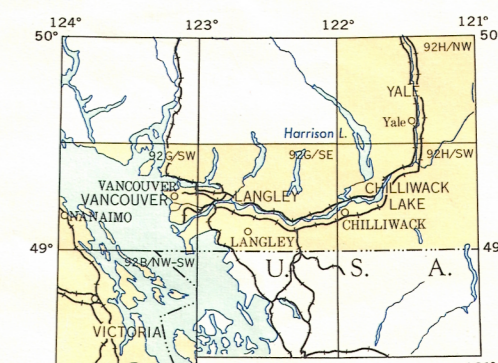
Magnetic Declination approximately 22°30' East at centre of sheet, 1967.
Decreases approximately 2'50" annually.

W. B. YOUNG, CHIEF GEOGRAPHER
Copies of this map may be obtained from Geographic Division, Surveys and Mapping Branch, Department of Lands, Forests, and Water Resources, Victoria, B.C.

REFERENCE

- Road, Hard Surface, All Weather
Loose Surface, All Weather
Loose Surface, Less than 2 Lanes
Four Wheel Drive
Trail
Railway
Main Telephone Line
Main Electric Power Line
Horizontal Control Station
Contours (Interval 100 feet)
Elevation in feet above mean sea-level
Intermittent Stream
Perennial Stream or Seasonal Floodplain
Swamp or Marsh
Glacier or Icefield
Spring
Dam
Water Gauge
Water Tank
Saw Mill
Crane
Cannery
Navigation Light
Abandoned Railway
International Boundary and Monument

Universal Transverse Mercator Projection



On the above maps published with districts for land status are colored yellow.
Land Commissioners' Offices are located in New Westminster and Vancouver.
Mineral Claims are not shown on this sheet.
District land lot numbers 24
Sections within Townships 24