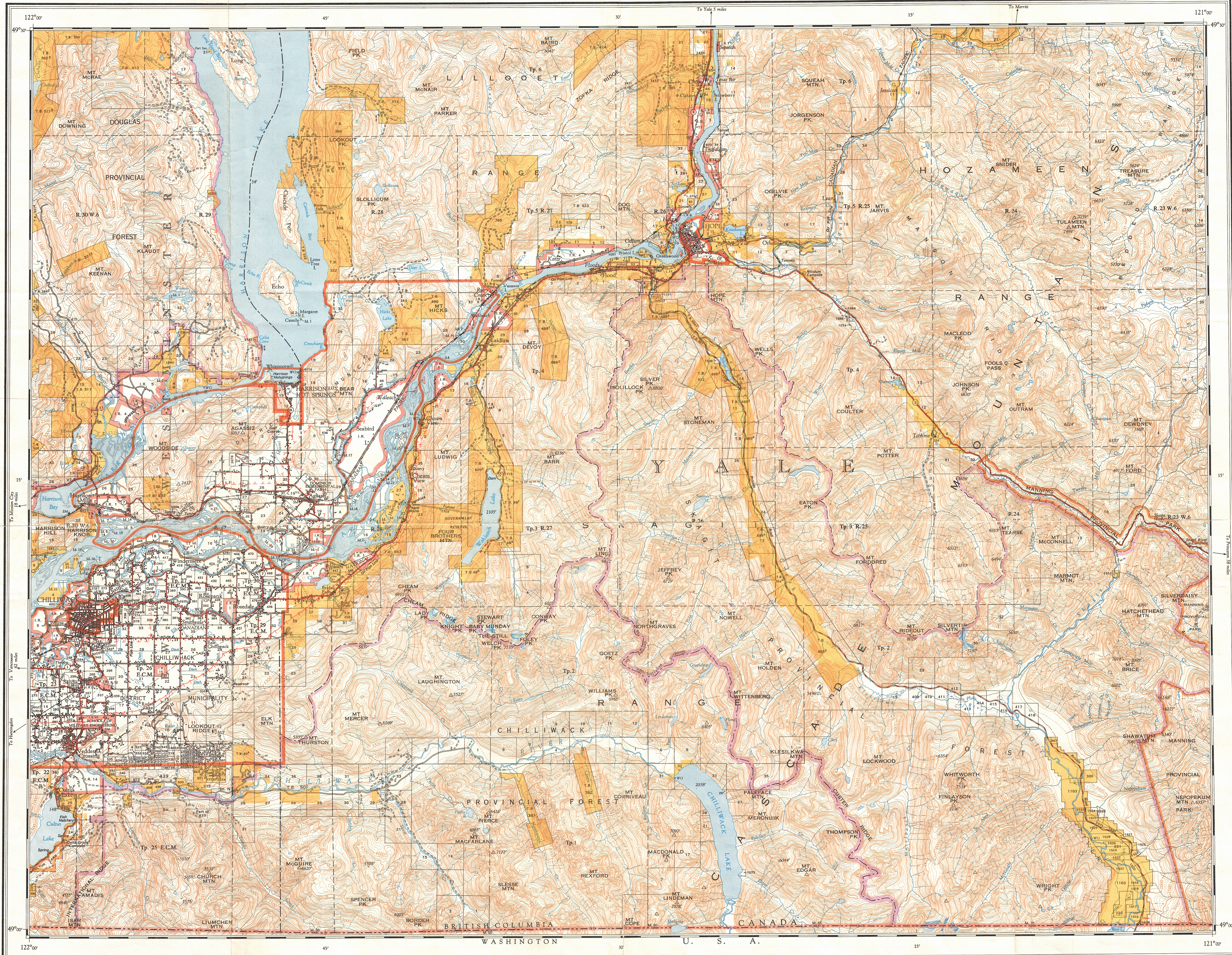


Ce document est le produit d'une numérisation par balayage de la publication originale.

This document was produced by scanning the original publication.



Surveyed in part by Mines and Technical Survey, Ottawa, 1952.
Produced by the Survey and Mapping Branch, Department of Lands and Forests, British Columbia, 1954-55. Air photos by B. C. Government, 1940-1954.

ADMINISTRATION
DIVISIONS, DISTRICTS, AND OFFICES COVERING MAP AREA

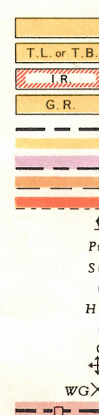
MINING DIVISIONS AND OFFICES
New Westminster—Gold Commissioner, New Westminster
Sub-Recorder, Chilliwack
Sub-Recorder, Hope

LAND RECORDING DIVISION AND OFFICES
New Westminster—New Westminster
Similkameen—Penticton

Nearest GOVERNMENT AGENTS to map area
New Westminster, Penticton

REFERENCE

Land altered or covered by application under the Land Act
Survived Timber Lease, License, or Bark
Indian Reserve
Government Reserve
Land District Boundary
Forest Management License
Provincial Forest Boundary
Park Boundary
Municipality
Town Service Lookout
Post Office
School
Church
Hospital
Building
Cemetery
Historic Monument
Water Gauge
International Boundary and Monument



CHILLIWACK LAKE
BRITISH COLUMBIA

Scale 1:126,720 or 1 Inch to 2 Miles

Miles 1 1/2 0 2 4 6 8 10 Miles

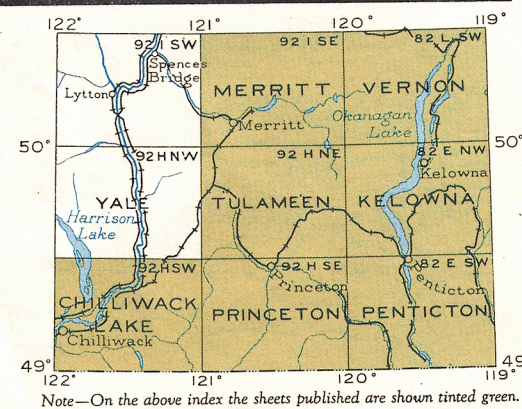
Scale of Kilometres

Magnetic Declination 3°32' East at centre of map, 1955
Decreasing 4 minutes annually.
W. R. YOUNG, CHIEF GEOGRAPHER

REFERENCE

Road, Road Surface, All Weather
Loose Surface, All Weather
Loose Surface, Less than 2 Lanes
All Weather
City Water
Trail
Railway
Telephone Line
Electric Power Line
Horizontal Control Station
Contours (Interval 100 feet)
Elevation in feet above mean sea-level
Intermittent Stream
Swamp or Marsh
Dam
Water Tank
Saw Mill
Mine
Gravel Pit
Customs Office
Dike
Culvert

Universal Transverse Mercator Projection



Note—On the above index the sheets published are shown tinted green.
Mineral Claims are not shown on this sheet.