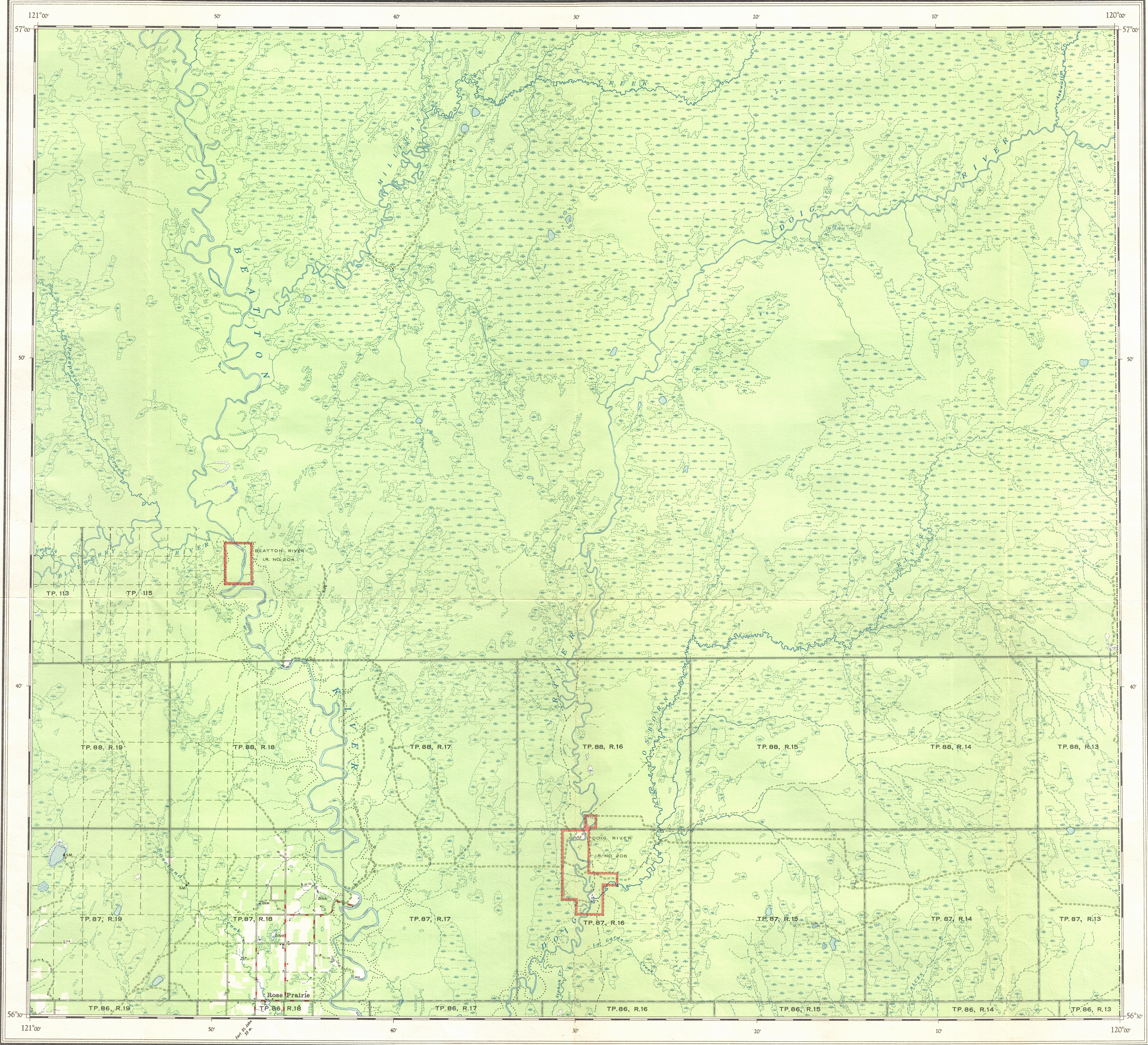


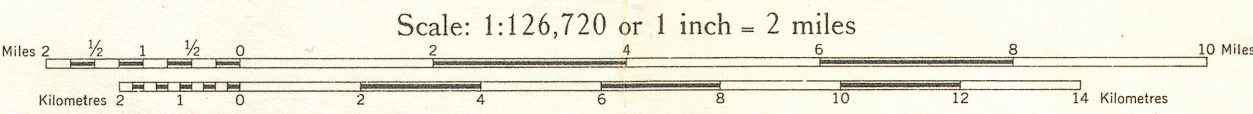
This document was produced
by scanning the original publication.
Ce document est le produit d'une
numérisation par balayage
de la publication originale.



Published by the Surveys and Mapping Branch 1951.
Compiled by the Topographical Survey in 1949, from air
photographs taken in 1945 by the Royal Canadian Air Force.
Magnetic Declination 30° 14' East at centre of sheet, 1950.
The declination of the compass needle is decreasing 5 minutes,
annually.
Lithographed and printed by the Army Survey Establishment
R.C.E., Department of National Defence.
Copies may be obtained from the map Distribution office,
Department of Mines and Technical Surveys, Ottawa.

REFERENCE	
Road, loose surface, graded and drained	Not less than 14 feet wide
Other roads	14 feet wide
Pack trail, position approximate	14 feet wide
Boundary, Interprovincial	
Boundary, Township surveyed	
Boundary, Township unsurveyed	
Section line	
Boundary, Indian Reserve	
Building	

ROSE PRAIRIE
WEST OF SIXTH MERIDIAN
BRITISH COLUMBIA



REFERENCE	
School	
Post Office	
Sawmill	
Edge of valley	
Stream, intermittent	
Lake, non-permanent	
Marsh or swamp	
Sand	
Wooded area	

