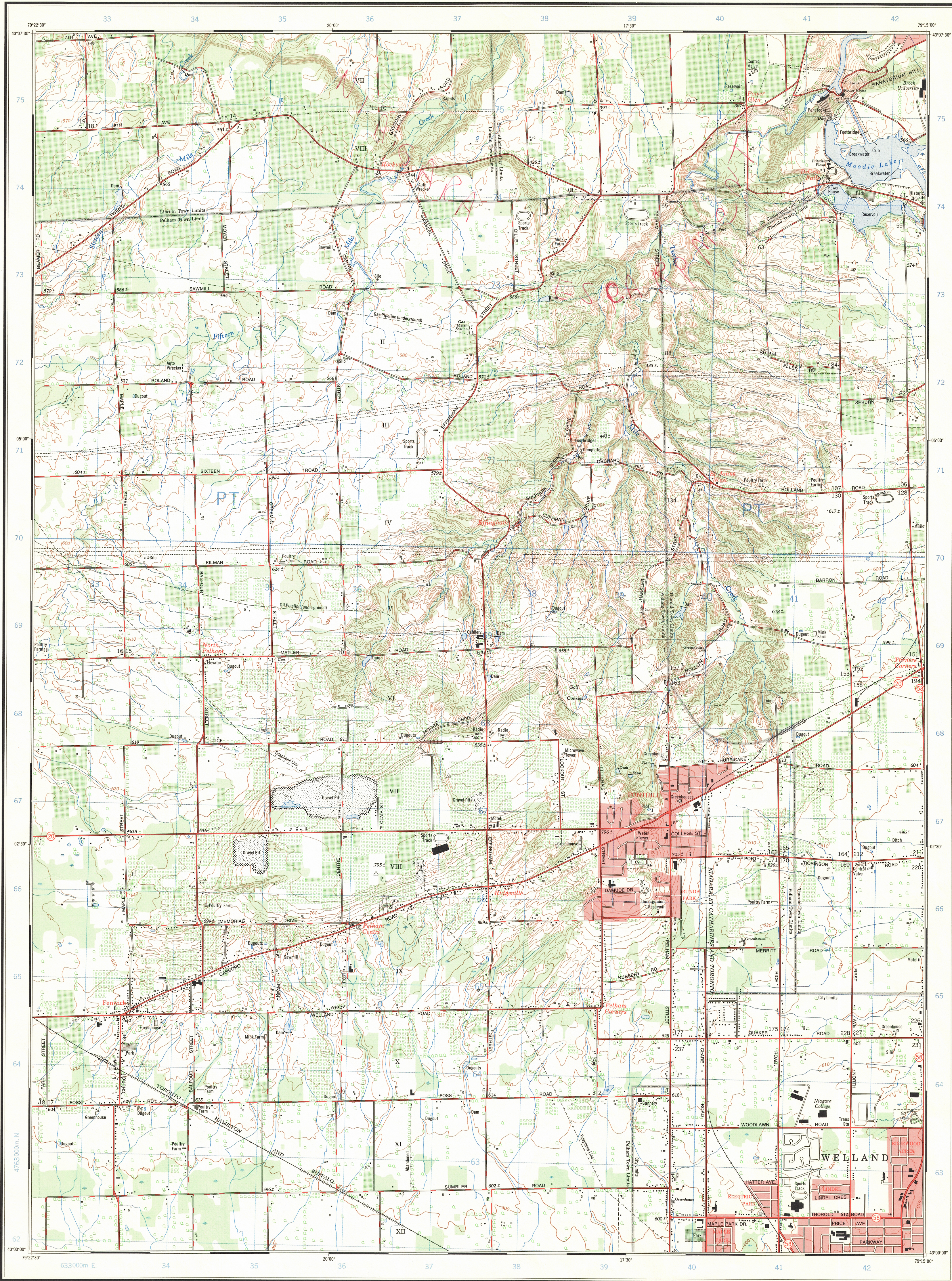


This document was produced
by scanning the original publication.
Ce document est le produit d'une
numérisation par balayage
de la publication originale.



CONVERSION SCALE FOR ELEVATIONS
30 20 10 0
100 200 300 400 500 600 700 800 900 1000
Feet
Metres

T.N.
1° 09' or 20 Miles
9° 12' or 164 Miles
Magnetic North
True North

Use diagram only to obtain numerical values.
APPROXIMATE MEAN DECLINATION 1972
FOR CENTRE OF MAP
Annual change increasing 1.5'

GRID ZONE DESIGNATION	100,000 M. SQUARE IDENTIFICATION
17T	PT

TO GIVE A REFERENCE TO NEAREST 100 METRES	
EXAMPLE: RADIO TOWER	
EASTING: Road number on grid line immediately to left of point	37
Estimate tenths of a square from this line northward to point	37.5
NORTHING: Road number on grid line immediately below point	67
Estimate tenths of a square from this line westward to point	67.8
MILITARY GRID REFERENCE	375678

ONE THOUSAND METRE
UNIVERSAL TRANSVERSE MERCATOR GRID
ZONE 17

Produced by the SURVEYS AND MAPPING BRANCH,
DEPARTMENT OF ENERGY, MINES AND RESOURCES.
Updated from aerial photographs taken in 1968. Culture check
1970. Published 1973.

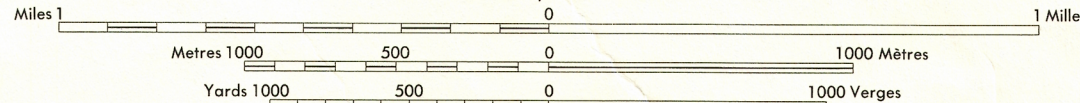
Copies may be obtained from the Canada Map Office,
Department of Energy, Mines and Resources, Ottawa,
or your nearest map dealer.

© Canada Copyrights Reserved 1973

FONTHILL

NIAGARA REGIONAL MUNICIPALITY
ONTARIO

Scale 1:25,000 Échelle



CONTOUR INTERVAL 10 FEET
Elevations in Feet above Mean Sea Level
North American Datum 1927
Transverse Mercator Projection

ÉQUIDISTANCE DES COURBES 10 PIÈDS
Élévations en pieds au-dessus du niveau moyen de la mer
Système de référence géodésique nord-américain, 1927
Projection Transverse de Mercator

Communities within cities and towns are named in red.

Les communautés à l'intérieur des cités et villes sont désignées en rouge.

Roads:	Routes:
hard surface, all weather.....	pavée, toute saison.....
hard surface, all weather.....	pavée, toute saison.....
loose or stabilized surface, all weather.....	gravier aggloméré, toute saison.....
loose surface, dry weather.....	de gravier, période sèche.....
cart track.....	de terre.....
trail or portage.....	sentier ou portage.....
Railway, normal gauge, single track.....	Chemin de fer, voie unique (écartement normal).....
Horizontal control point, with elevation.....	Point géodésique, avec cote.....
Bench mark, with elevation.....	Repère de nivellement, avec cote.....
Spot elevation, precise.....	Point cote précise.....
Mine or open cut.....	Mine ou fosse à ciel ouvert.....

Building.....	Bâtiment.....	Church.....	Église.....
School.....	École.....	Post Office.....	Bureau de poste.....
Cemetery.....	Cimetière.....	Navigation Light.....	Feu de navigation.....
Rock, bare or awash.....	Roche, nue ou à fleur d'eau.....		
Power transmission line.....	Ligne de transport d'énergie.....		
River with bridge.....	Rivière avec pont.....		
Rapids, Falls, large, small.....	Rapides, Chutes, grands, petits.....		
Lake intermittent, indefinite.....	Lac intermittent, indéfini.....		
Marsh or Swamp.....	Marais ou marécage.....		
Depression contours.....	Courbes de cuvette.....		
Trees.....	Arbres.....		
Woods.....	Bois.....		
Vineyard, Orchard.....	Vignoble, Verger.....		

TABLEAU D'ASSEMBLAGE DU SYSTÈME NATIONAL DE RÉFÉRENCE CARTOGRAPHIQUE		
79°30'00"	79°07'30"	43°15'00"
30 M/3a	30 M/3i	30 M/3g
30 M/3b	30 M/3c	30 M/3h
30 M/3d	30 M/3e	30 M/3f
30 M/3i	30 M/3j	30 M/3k
30 M/3l	30 M/3m	30 M/3n
30 M/3o	30 M/3p	30 M/3q
30 M/3r	30 M/3s	30 M/3t
30 M/3u	30 M/3v	30 M/3w
30 M/3x	30 M/3y	30 M/3z
42°52'30"	79°07'30"	43°15'00"

INDEX TO ADDITIONAL MAPS OF THE NATIONAL TOPOGRAPHIC SYSTEM

FONTHILL
30 M/3c
EDITION 2