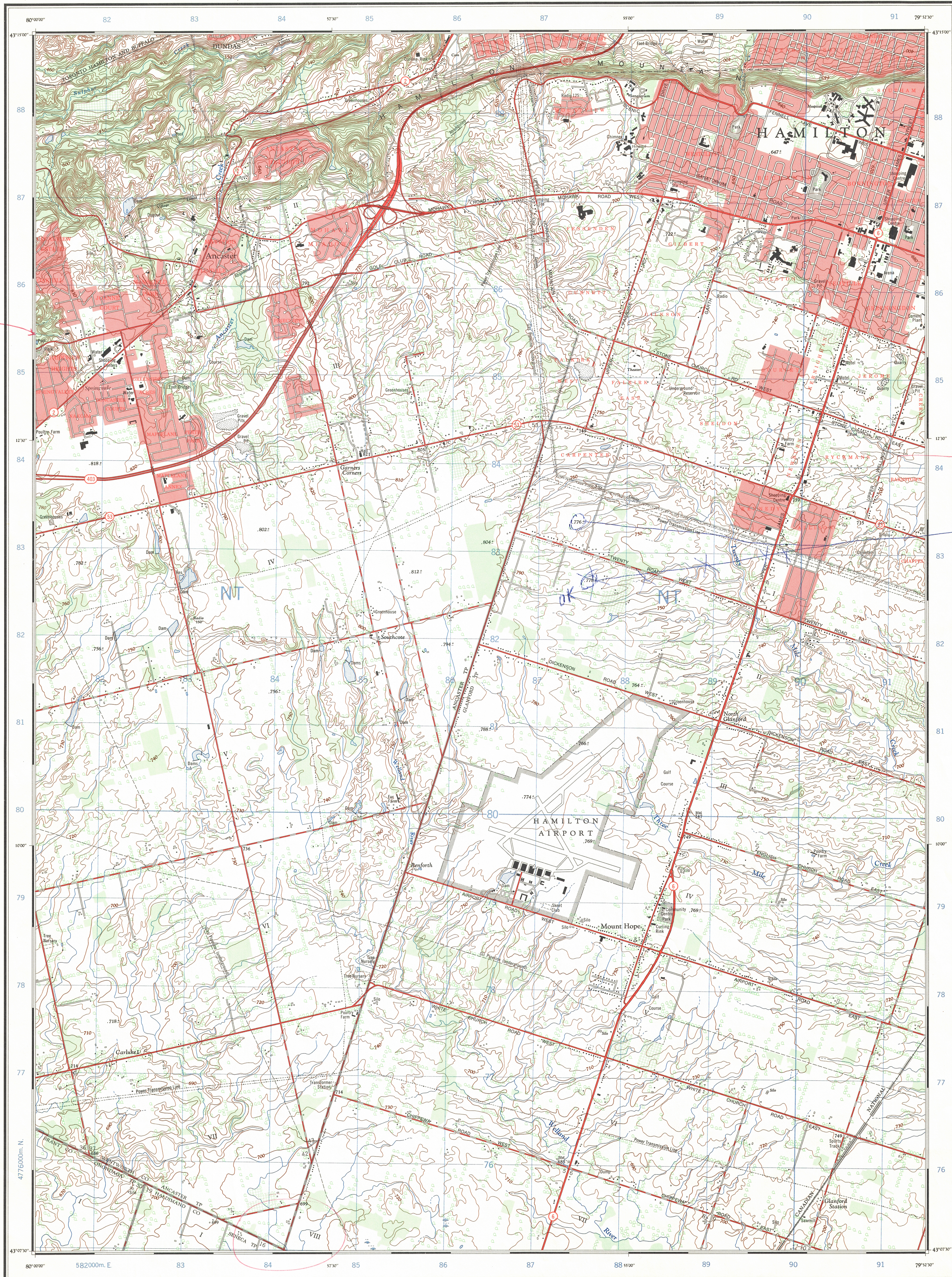


Refer to
this map as:
30 M/4e
EDITION 3 MCE
SERIES A 851



Change to
766 1/4/81

CONVERSION SCALE FOR ELEVATIONS
Feet
Metres

T.N.
0° 44' or 13 Miles
8° 01' or 143 Miles
Magnetic North
True North

Use diagram only to obtain numerical values.
APPROXIMATE MEAN DECLINATION 1972
FOR CENTRE OF MAP
Annual change increasing 1.5'

GRID ZONE DESIGNATION	100,000 M. SQUARE IDENTIFICATION
17 T	N T

TO GIVE A REFERENCE TO NEAREST 100 METRES	
EXAMPLE:	CHURCH
EASTING: Road number on grid line immediately to left of point	88
Estimate tenths of a square from this line eastward to point.	883
NORTHING: Road number on grid line immediately below point	78
Estimate tenths of a square from this line northward to point.	788
MILITARY GRID REFERENCE	883788
Nearest similar grid reference 100,000 metres (about 63 miles)	

ONE THOUSAND METRE
UNIVERSAL TRANSVERSE MERCATOR GRID
ZONE 17

Produced by the SURVEYS AND MAPPING BRANCH,
DEPARTMENT OF ENERGY, MINES AND RESOURCES.
Information depicted current as of 1969. Printed 1973.

Copies may be obtained from the Canada Map Office,
Department of Energy, Mines and Resources, Ottawa,
or your nearest map dealer.

© Canada Copyrights Reserved 1973

San Pipeline gas in
line.

MOUNT HOPE ONTARIO

Scale 1:25,000 Échelle
Miles 1 0 1
Metres 1000 500 0 500 1000
Yards 1000 500 0 500 1000

CONTOUR INTERVAL 10 FEET
Elevations in Feet above Mean Sea Level
North American Datum 1927
Transverse Mercator Projection

ÉLOUANTÉ DES COURBES 10 PIEDS
Élévations en pieds au-dessus du niveau moyen de la mer
Système de référence géodésique nord-américain, 1927
Projection transverse de Mercator

Building.....Bâtiment.....	Church.....Église.....
School.....École.....	Post Office.....Bureau de poste.....
Cemetery.....Cimetière.....	Navigation Light.....Feu de navigation.....
Rock, bare or awash.....	Roche, nue ou à fleur d'eau.....
Power transmission line.....	Ligne de transport d'énergie.....
River with bridge.....	Rivière avec pont.....
Rapids, Falls, large small.....	Rapides, Chutes, grands, petits.....
Lake intermittent, indistinct.....	Lac intermittent, peu imprécis.....
Marsh or Swamp.....	Marais ou marécage.....
Depression contours.....	Courbes de cuvette.....
Trees.....	Arbres.....
Woods.....	Bois.....
Vineyard, Orchard.....	Vignoble, Verger.....

TABLEAU D'ASSEMBLAGE DU SYSTÈME NATIONAL
DE RÉFÉRENCE CARTOGRAPHIQUE

80°07'30"	79°45'00"	80°07'30"
40 P/8a	30 M/5d	30 M/5c
40 P/1h	30 M/4e	30 M/4f
40 P/1a	30 M/4d	30 M/4c
80°07'30"	79°45'00"	80°07'30"

MOUNT HOPE
30 M/4e
EDITION 3