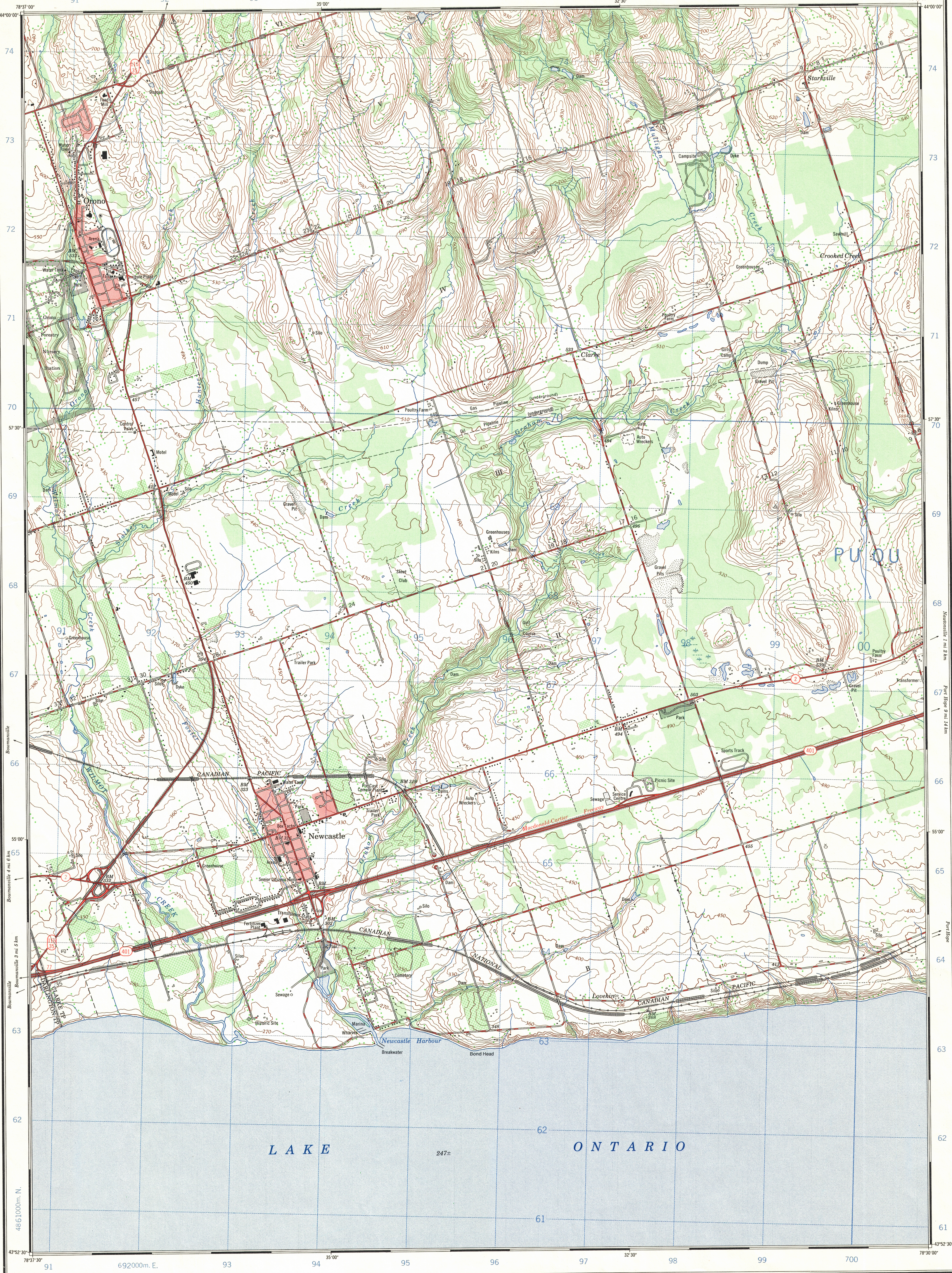
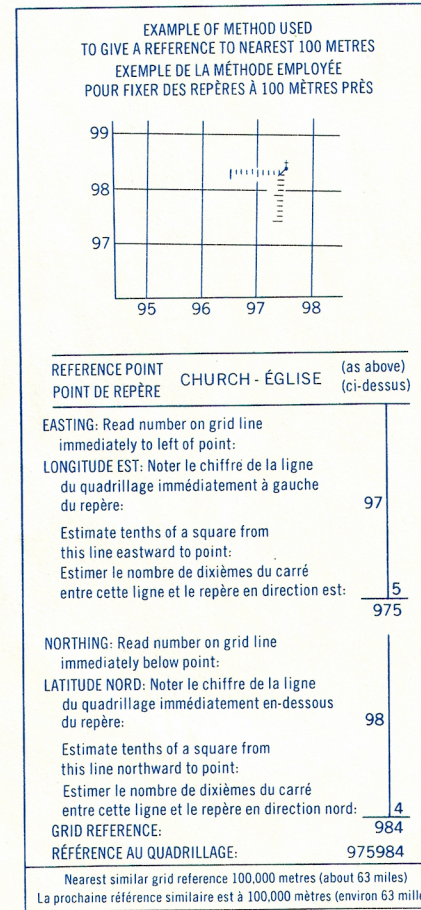
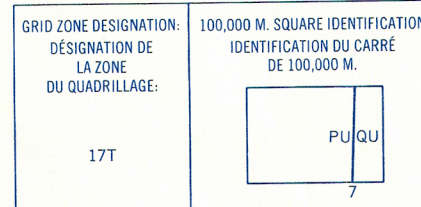
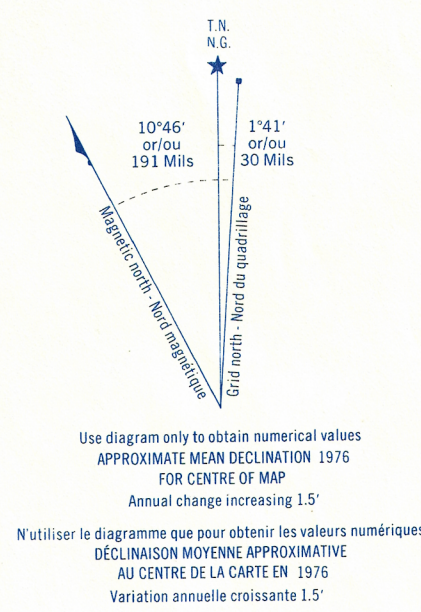


CONVERSION SCALE FOR ELEVATIONS
ÉCHELLE DE CONVERSION DES ÉLEVATIONS

Meters 0 100 200 300 400 500 600 700 800 900 1000
Feet 0 100 200 300 400 500 600 700 800 900 1000



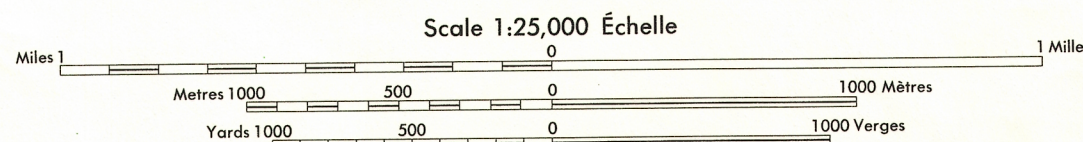
Produced by the SURVEYS AND MAPPING BRANCH,
DEPARTMENT OF ENERGY, MINES AND RESOURCES.
Updated from aerial photography taken in 1974. Culture check
1975. Information current as of 1975.

Copies may be obtained from the Canada Map Office,
Department of Energy, Mines and Resources, Ottawa,
or your nearest map dealer.

© Canada Copyrights Reserved 1975

NEWCASTLE

DURHAM REGIONAL MUNICIPALITY
ONTARIO



CONTOUR INTERVAL 10 FEET
Elevations in Feet above Mean Sea Level
North American Datum 1927
Transverse Mercator Projection

ÉQUIDISTANCE DES COURBES 10 PIEDS
Élevations en pieds au-dessus du niveau moyen de la mer
Système de référence géodésique nord-américain, 1927
Projection transverse de Mercator

Building	Bâtiment	Church	Église
School	École	Post Office	Bureau de poste
Cemetery	Cimetière	Navigation Light	Feu de navigation
Rock; bare or awash	Roche, nue ou à fleur d'eau		
Power transmission line	Ligne de transport d'énergie		
River with bridge	Rivière avec pont		
Rapids, Falls, large dam	Rapides, Chutes, grands, petits		
Lake intermittent, indeterminate	Lac intermittent, rive imprécise		
Marsh or Swamp	Marais ou marécage		
Depression contours	Courbes de cuvette		
Trees	Arbres		
Woods	Bois		
Vineyard, Orchard	Vignoble, Verger		

TABULEAU D'ASSEMBLAGE DU SYSTÈME NATIONAL
DE RÉFÉRENCE CARTOGRAPHIQUE

