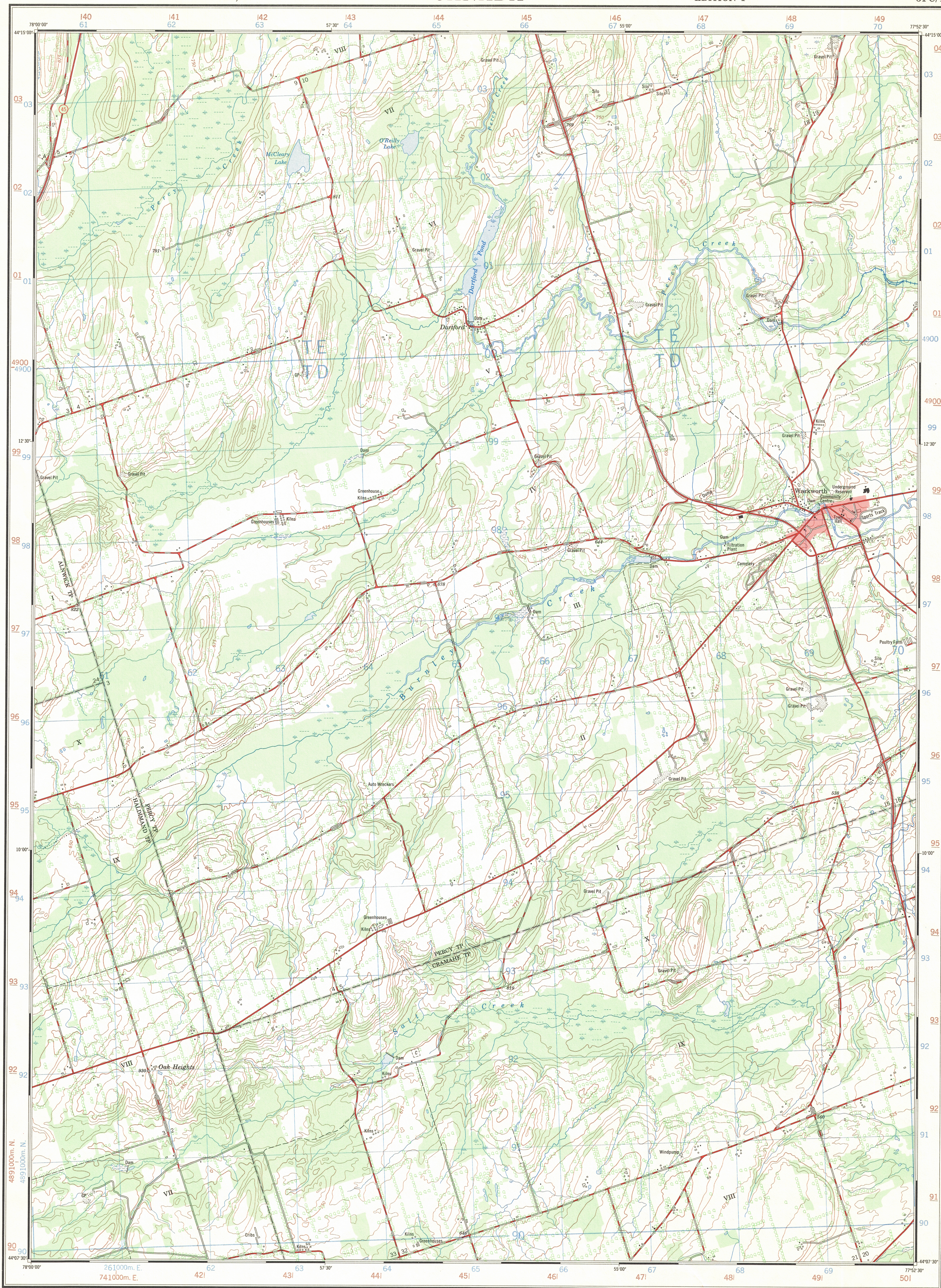


Ce document est le produit d'une numérisation par balayage de la publication originale.

This document was produced by scanning the original publication.



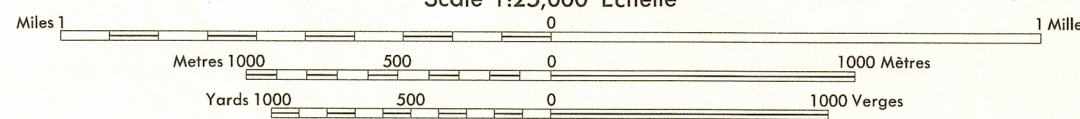
Produced by the SURVEYS and MAPPING BRANCH,  
DEPARTMENT OF ENERGY, MINES AND RESOURCES.  
Information depicted current as of 1967. Printed 1970.

Copies may be obtained from the Map Distribution Office,  
Department of Energy, Mines and Resources, Ottawa.

## WARKWORTH

NORTHUMBERLAND COUNTY  
ONTARIO

Scale 1:25,000 Échelle



CONTOUR INTERVAL 25 FEET  
Elevations in Feet above Mean Sea Level  
North American Datum 1927  
Transverse Mercator Projection

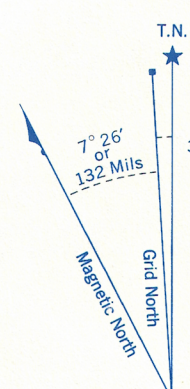
ÉLOUANCEMENT DES COURBES 25 PIEDS  
Élevations en pieds au-dessus du niveau moyen de la mer  
Système de référence géodésique nord-américain 1927  
Projection transverse de Mercator

Roads:	Routes:	
hard surface, all weather	pavée, toute saison	2 chaussées séparées plus de 2 voies
hard surface, all weather	pavée, toute saison	2 voies moins de 2 voies
loose or stabilized surface, all weather	gravier aggloméré, toute saison	2 voies ou moins
loose surface, dry weather	de gravier période sèche	2 voies ou plus
cart track	de terre	
trail or portage	sentier ou portage	
Railway, normal gauge, single track	Chemin de fer, voie unique (écartement normal)	voie d'écartement normal
Horizontal control point, with elevation	Point géodésique, avec cote	Point géodésique
Bench mark, with elevation	Repère de nivellement, avec cote	B.M. 157
Spot elevation, precise	Point coté, précis	Point coté
Mine or open cut	Mine ou fosse à ciel ouvert	

Building	Bâtiment	Church	Église
School	École	Post Office	Bureau de poste
Cemetery	Cimetière	Navigation Light	Feu de navigation
Rock, bare or awash	Roche, nue ou à fleur d'eau		
Power transmission line	Ligne de transport d'énergie		
River with bridge	Rivière avec pont		
Rapids, Falls, large small	Rapides, Chutes, grands, petits		
Lake intermittent, indefinite	Lac intermittent, rive imprécise		
Marsh or Swamp	Marais ou marécage		
Depression contours	Courbes de cuvette		
Trees	Arbres		
Woods	Bois		
Vineyard, Orchard	Vignoble, Verger		

Refer to this map as: 31 C/4e EDITION 1 MCE SERIES A851

CONVERSION SCALE FOR ELEVATIONS  
Feet  
Metres

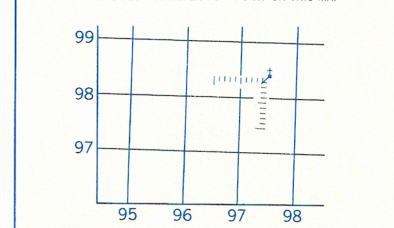


Use diagram only to obtain numerical values.  
APPROXIMATE MEAN DECLINATION 1969  
FOR CENTRE OF MAP  
Annual change increasing 1.1"

ONE THOUSAND METRE  
UNIVERSAL TRANSVERSE MERCATOR GRID  
ZONE 18

GRID ZONE DESIGNATION	100,000 M. SQUARE IDENTIFICATION
18 T	TE TD 49

EXAMPLE OF METHOD USED  
TO GIVE A REFERENCE TO NEAREST 100 METRES  
THE FOLLOWING GRID REFERENCE IS A SAMPLE ONLY  
AND DOES NOT REFER TO A POINT ON THIS MAP



REFERENCE POINT	CHURCH (as above)
EASTING: Read number on grid line immediately to left of point	97
Estimate tenths of a square from this line eastward to point	5
NORTHING: Read number on grid line immediately below point	98
Estimate tenths of a square from this line northward to point	4
EXAMPLE MILITARY GRID REFERENCE	975984
Nearest similar grid reference 100,000 metres (about 63 miles)	984

BROWN NUMBERED TICKS INDICATE  
THE 1000 METRE U.T.M. GRID  
ZONE 17

TABLEAU D'ASSEMBLAGE DU SYSTÈME NATIONAL DE RÉFÉRENCE CARTOGRAPHIQUE		
44°22'30"	78°07'30"	77°45'00"
31 D/8a	31 C/5d	31 C/5c
31 D/1h	31 C/4e	31 C/4f
31 D/1a	31 C/4d	31 C/4c
44°00'00"	78°07'30"	77°45'00"

INDEX TO ADJOINING MAPS OF  
THE NATIONAL TOPOGRAPHIC SYSTEM

WARKWORTH  
31 C/4e  
EDITION 1