

Refer to  
this map as:

31 G/1e  
EDITION 1 MCE  
SERIES A 861

CONVERSION SCALE FOR ELEVATIONS

Feet 0 100 200 300 400 500 600 700 800 900 1000

Meters 0 100 200 300 400 500 600 700 800 900 1000

T.N.  
14° 19' 0" 24"  
255 Mils  
7 Mils  
Magnetic North  
Grid North

Use diagram only to obtain numerical values.  
APPROXIMATE MEAN DECLINATION 1972  
FOR CENTRE OF MAP  
Annual change increasing 0.2'

ONE THOUSAND METRE  
UNIVERSAL TRANSVERSE MERCATOR GRID  
ZONE 18

GRID ZONE  
DESIGNATION

18 T

100,000 M. SQUARE IDENTIFICATION

WF WE 50

EXAMPLE OF METHOD USED  
TO GIVE A REFERENCE TO NEAREST 100 METRES  
THE FOLLOWING GRID REFERENCE IS A SAMPLE ONLY  
AND DOES NOT REFER TO A POINT ON THIS MAP

99  
98  
97

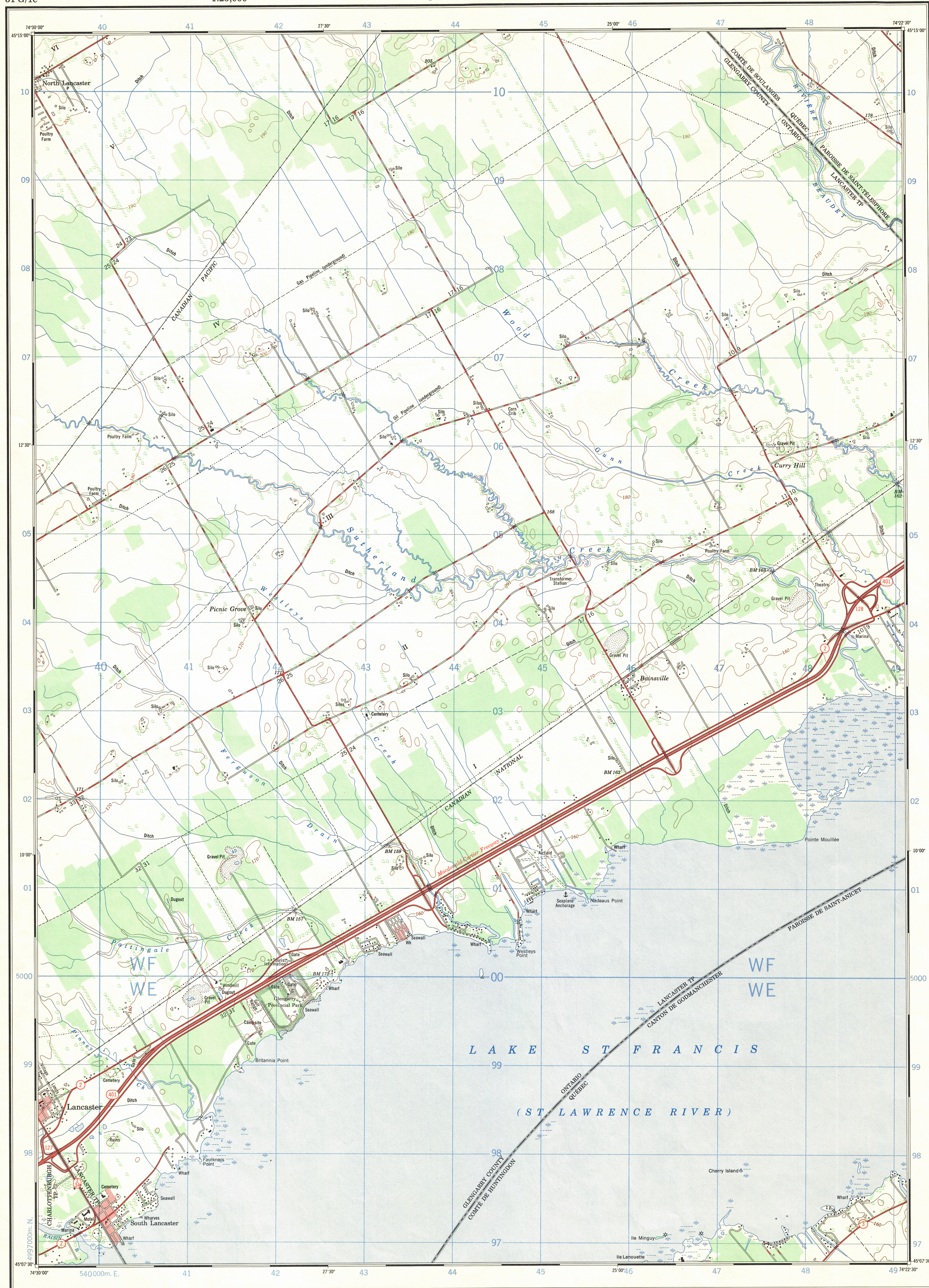
95 96 97 98

REFERENCE POINT CHURCH (as above)

EASTING: Read number on grid line  
immediately to left of point  
Estimate tenths of a square from  
this line eastward to point

NORTHING: Read number on grid line  
immediately below point  
Estimate tenths of a square from  
this line northward to point

EXAMPLE MILITARY GRID REFERENCE 975984  
Nearest similar grid reference 100,000 metres (about 63 miles)



## SOUTH LANCASTER ONTARIO-QUÉBEC

Produced by the SURVEYS AND MAPPING BRANCH,  
DEPARTMENT OF ENERGY, MINES AND RESOURCES.  
Information depicted current as of 1970. Printed 1973

Copies may be obtained from the Canada Map Office,  
Department of Energy, Mines and Resources, Ottawa,  
or your nearest map dealer.

© Canada Copyrights Reserved 1973

Roads: hard surface, all weather..... pavée, toute saison..... 2 chaussées séparées..... 2 voies..... loose or stabilized surface, all weather..... gravier aggloméré, toute saison..... 2 voies ou plus..... loose surface, dry weather..... de gravier, période sèche..... de terre..... trail or portage..... sentier ou portage..... Railway, normal gauge, single track..... Chemin de fer, voie unique (écartement normal)..... Horizontal control point, with elevation..... Point géodésique, avec cote..... Bench mark, with elevation..... Repère de nivellement, avec cote..... Spot elevation, precise..... Point coté, précis..... Mine or open cut..... Mine ou fosse à ciel ouvert.....

Routes: dual highway..... plus de 2 voies..... 2 lanes..... moins de 2 voies..... 2 lanes..... moins de 2 voies..... 2 lanes or more..... moins de 2 voies..... 2 voies ou plus..... moins de 2 voies.....

Contours: Contour interval 10 feet..... Équidistance des courbes 10 pieds..... Elevations in feet above Mean Sea Level..... Élévations en pieds au-dessus du niveau moyen de la mer..... North American Datum 1927..... Système de référence géodésique nord-américain, 1927..... Transverse Mercator Projection..... Projection transverse de Mercator.....

Scale 1:25,000 Échelle

Miles 0 1 2

Metres 1000 500 0 1000

Yards 1000 500 0 1000

Building..... Bâtiment..... Church..... Église..... School..... École..... Post Office..... Bureau de poste..... Cemetery..... Cimetière..... Navigation Light..... Feu de navigation..... Rock, bare or awash..... Roche, nue ou à fleur d'eau..... River with bridge..... Rivière avec pont..... Power transmission line..... Ligne de transport d'énergie..... Rapids, Falls, large, small..... Rapides, Chutes, grands, petits..... Lake intermittent, indefinite..... Lac intermittent, rive imprécise..... Marsh or Swamp..... Marais ou marécage..... Depression contours..... Courbes de cuvette..... Trees..... Arbres..... Woods..... Bois..... Vineyard, Orchard..... Vignoble, Verger.....

TABLEAU D'ASSEMBLAGE DU SYSTÈME NATIONAL  
DE RÉFÉRENCE CARTOGRAPHIQUE

74°37'30" 74°15'00" 45°00'00"

31 G/7a 31 G/8a 31 G/8c

31 G/2b 31 G/1e 31 G/1i

31 G/2a 31 G/1d 31 G/1c

INDEX TO ADJOINING MAPS OF  
THE NATIONAL TOPOGRAPHIC SYSTEM

SOUTH LANCASTER  
31 G/1e  
EDITION 1