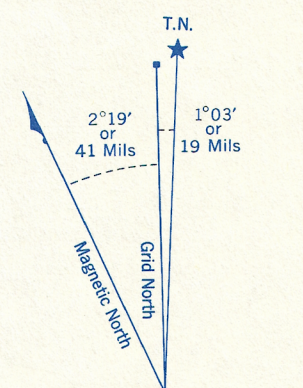


Refer to  
this map as: 40 J/2 h  
EDITION 1 MCE  
SERIES A 851

CONVERSION SCALE FOR ELEVATIONS

100 200 300 400 500 600 700 800 900 1000  
Feet  
Metres

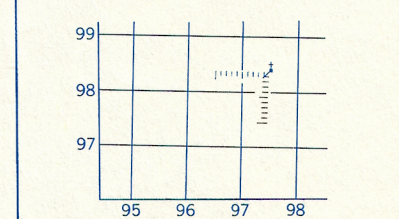


Use diagram only to obtain numerical values.  
APPROXIMATE MEAN DECLINATION 1967  
FOR CENTRE OF MAP  
Annual change increasing 2.2"

ONE THOUSAND METRE  
UNIVERSAL TRANSVERSE MERCATOR GRID  
ZONE 17

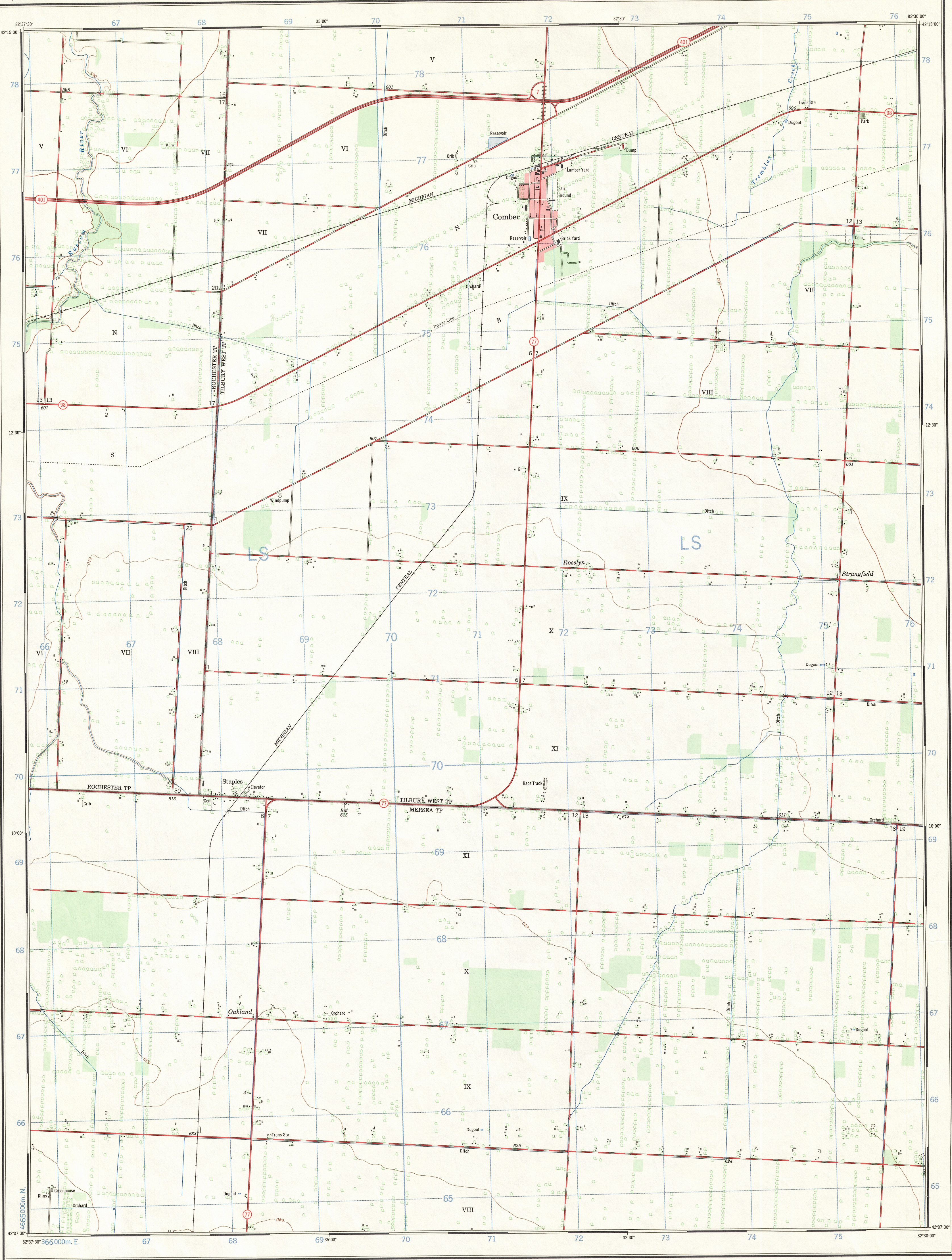
GRID ZONE DESIGNATION	100,000 M. SQUARE IDENTIFICATION
17 T	LS

EXAMPLE OF METHOD USED  
TO GIVE A REFERENCE TO NEAREST 100 METRES  
THE FOLLOWING GRID REFERENCE IS A SIMPLE ONLY  
AND DOES NOT REFER TO A POINT ON THIS MAP



REFERENCE POINT	CHURCH (as above)
EASTING: Read number on grid line immediately to left of point Estimate tenths of a square from this line eastward to point	97 97.5
NORTHING: Read number on grid line immediately below point Estimate tenths of a square from this line northward to point	98 98.4

EXAMPLE MILITARY GRID REFERENCE 975984  
Nearest similar grid reference 100,000 metres (about 63 miles)



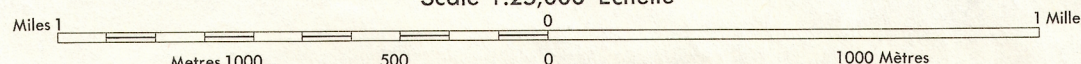
Produced by the SURVEYS AND MAPPING BRANCH  
DEPARTMENT OF ENERGY, MINES AND RESOURCES.  
Information depicted current as of 1985. Printed 1988.

Copies may be obtained from the Map Distribution Office,  
Department of Energy, Mines and Resources, Ottawa.

## COMBER

ESSEX COUNTY  
ONTARIO

Scale 1:25,000 Échelle



Roads:	Routes:	2 lanes	more than 2 lanes
hard surface, all weather	pavée, toute saison	2 voies	plus de 2 voies
hard surface, all weather	pavée, toute saison	2 voies	moins de 2 voies
loose or stabilized surface, all weather	gravier aggloméré, toute saison	2 voies ou plus	plus de 2 voies
loose surface, dry weather	de gravier période sèche	2 voies ou plus	moins de 2 voies
cart track	de terre		
trail or portage	sentier ou portage		
Railway, normal gauge, single track	Chemin de fer, voie unique (écartement normal)	single track	single track
Horizontal control point, with elevation	Point géodésique, avec cote	454	454
Bench mark, with elevation	Repère de nivellement, avec cote	BM 157	450
Spot elevation, precise	Point coté, précis		450
Mine or open cut	Mine ou fosse à ciel ouvert		

CONTOUR INTERVAL 10 FEET  
Elevations in Feet above Mean Sea Level  
North American Datum 1927  
Transverse Mercator Projection

ÉQUIDISTANCE DES COURBES 10 PIEDS  
Élévation en pieds au-dessus du niveau moyen de la mer  
Niveau de référence nord amér. 1927  
Projection transverse de Mercator

Building	Bâtiment	Church	Église
School	École	Post Office	Bureau de poste
Cemetery	Cimetière	Navigation Light	Feu de navigation
Rock bare or wash	Roche, nue ou à fleur d'eau		
Power transmission line	Ligne de transport d'énergie		
River with bridge	Rivière avec pont		
Rapids, Falls, large small	Rapides, Chutes, grands, petits		
Lake intermittent, indefinite	Lac intermittent, rive imprécise		
Marsh or Swamp	Marais ou marécage		
Depression contours	Courbes de cuvette		
Trees	Arbres		
Woods	Bois		
Vineyard, Orchard	Vignoble, Verger		

TABLEAU D'ASSEMBLAGE DU SYSTÈME NATIONAL DE RÉFÉRENCE CARTOGRAPHIQUE			
82°45'00"		82°22'30"	
40 J/7b	40 J/7a	40 J/8d	
40 J/2g	40 J/2f	40 J/1e	
40 J/2b	40 J/2a	40 J/1d	
42°22'30"		42°00'00"	
INDEX TO ADJOINING MAPS OF THE NATIONAL TOPOGRAPHIC SYSTEM			

COMBER  
40 J/2h  
EDITION 1