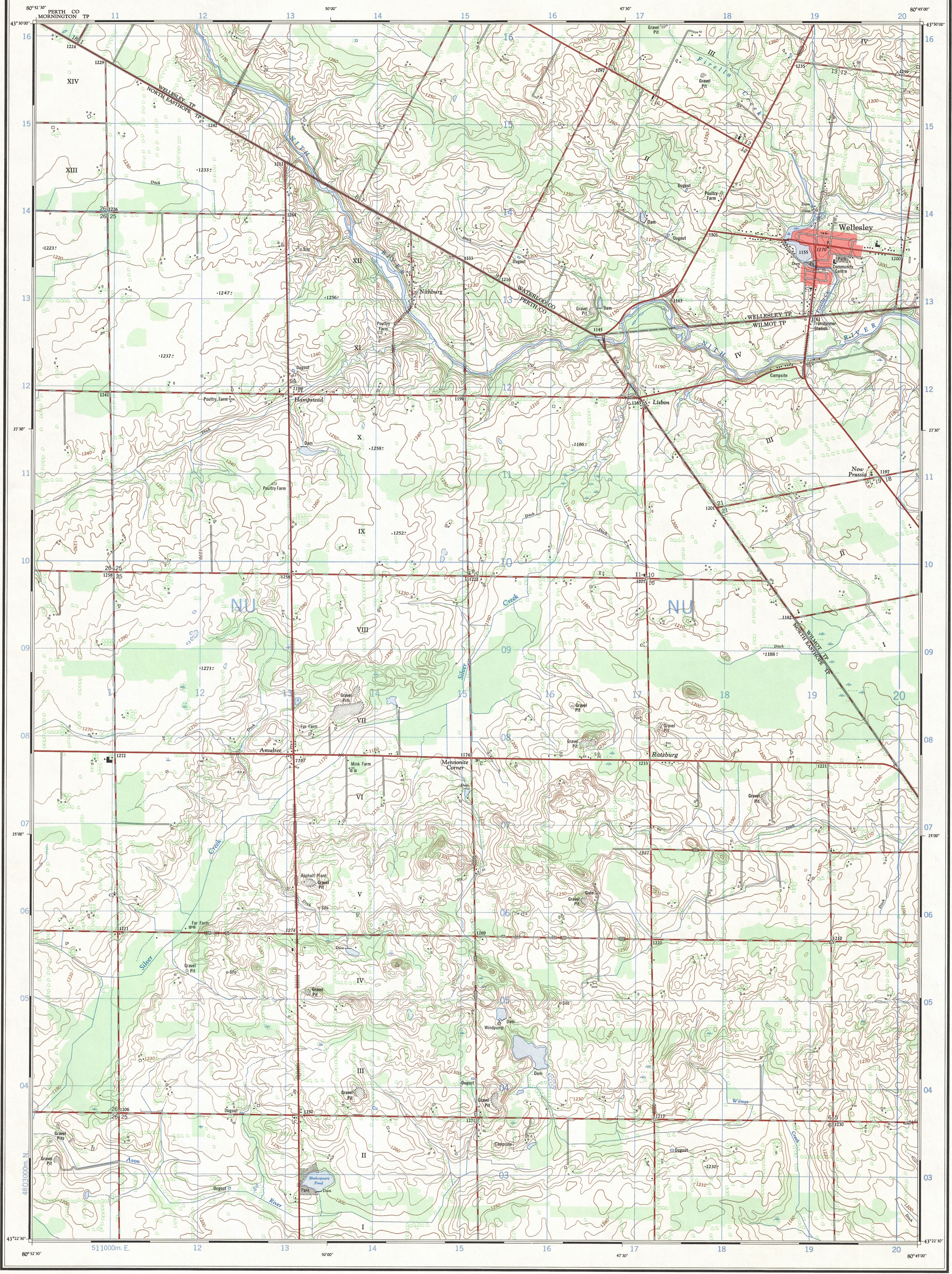
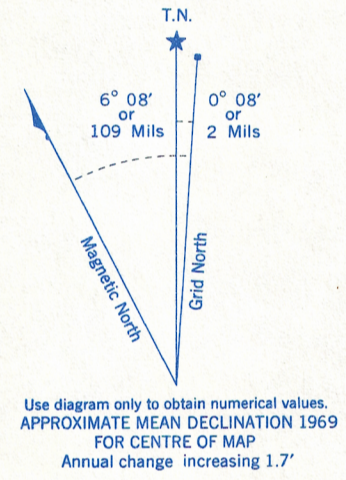
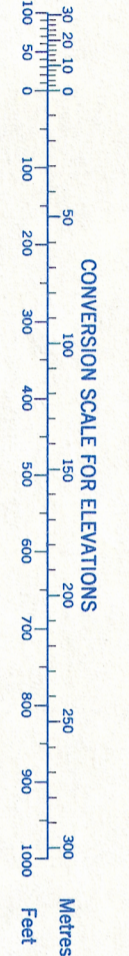


Ce document est le produit d'une numérisation par balayage de la publication originale.

This document was produced by scanning the original publication.



Refer to this map as: 40 P/7 f EDITION 2 MCE SERIES A 851



ONE THOUSAND METRE UNIVERSAL TRANSVERSE MERCATOR GRID ZONE 17

GRID ZONE DESIGNATION	100,000 M. SQUARE IDENTIFICATION
17 T	NU

EXAMPLE OF METHOD USED TO GIVE A REFERENCE TO NEAREST 100 METRES THE FOLLOWING REFERENCE IS A SQUARE ONLY AND DOES NOT REFER TO A POINT ON THIS MAP

99			
98			
97			
96			

REFERENCE POINT	CHURCH (as above)	
EASTING: Road number on grid line immediately to left of point	Estimate tenths of a square from this line westward to point	97
NORTHING: Road number on grid line immediately below point	Estimate tenths of a square from this line northward to point	97.5
		98
		98.4
EXAMPLE MILITARY GRID REFERENCE 97984		
Nearest similar grid reference 100,000 metres (about 62 miles)		

Produced by the SURVEYS AND MAPPING BRANCH, DEPARTMENT OF ENERGY, MINES AND RESOURCES. Information depicted current as of 1969. Printed 1972.

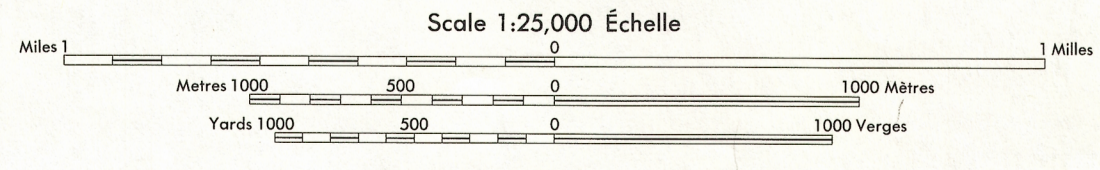
Copies may be obtained from the Map Distribution Office, Department of Energy, Mines and Resources, Ottawa.

WELLESLEY ONTARIO

Établie par la DIRECTION DES LEVÉS ET DE LA CARTOGRAPHIE, MINISTÈRE DE L'ÉNERGIE, DES MINES ET DES RESSOURCES. Renseignements 2 jour en 1969. Imprimé en 1972.

Ces cartes sont en vente au Bureau de distribution des cartes, ministère de l'Énergie, des Mines et des Ressources, Ottawa.

Roads:	Routes:
hard surface, all weather	2 chaussées séparées
hard surface, all weather	2 voies
loose or stabilized surface, all weather	2 voies
loose surface, dry weather	2 voies ou plus
car track	de terres
trail or portage	sentier ou portage
Railway, normal gauge, single track	Chemin de fer, voie unique (écartement normal)
Horizontal control point, with elevation	Point géodésique, avec cote
Bench mark, with elevation	Repère de nivellement, avec cote
Spot elevation, precise	Point cote, précise
Mine or open cut	Mine ou fosse à ciel ouvert



CONTOUR INTERVAL 10 FEET
Elevations in Feet above Mean Sea Level
North American Datum 1927
Transverse Mercator Projection

ÉQUIDISTANCE DES COURBES 10 PIÈDS
Élévations en pieds au-dessus du niveau moyen de la mer
Système de référence géodésique nord-américain, 1927
Projection transverse de Mercator

Building	Bâtiment	Church	Église
School	École	Post Office	Bureau de poste
Cemetery	Cimetière	Navigation Light	Feu de navigation
Rock, bare or awash	Roche, nue ou à fleur d'eau		
Power transmission line	Ligne de transport d'énergie		
River with bridge	Rivière avec pont		
Rapids, Falls, large small	Rapides, Chutes, grands, petits		
Lake intermittent, indefinite	Lac intermittent, rive imprécise		
Marsh or Swamp	Marais ou marécage		
Depression contours	Courbes de cuvette		
Trees	Arbres		
Woods	Bois		
Vineyard, Orchard	Vignoble, Verger		

TABULEAU D'ASSEMBLAGE DU SYSTÈME NATIONAL DE RÉFÉRENCE CARTOGRAPHIQUE

81°00'00"	80°37'30"	80°05'00"
43°15'00"	43°15'00"	43°15'00"

INDEX TO ADJOINING MAPS OF THE NATIONAL TOPOGRAPHIC SYSTEM