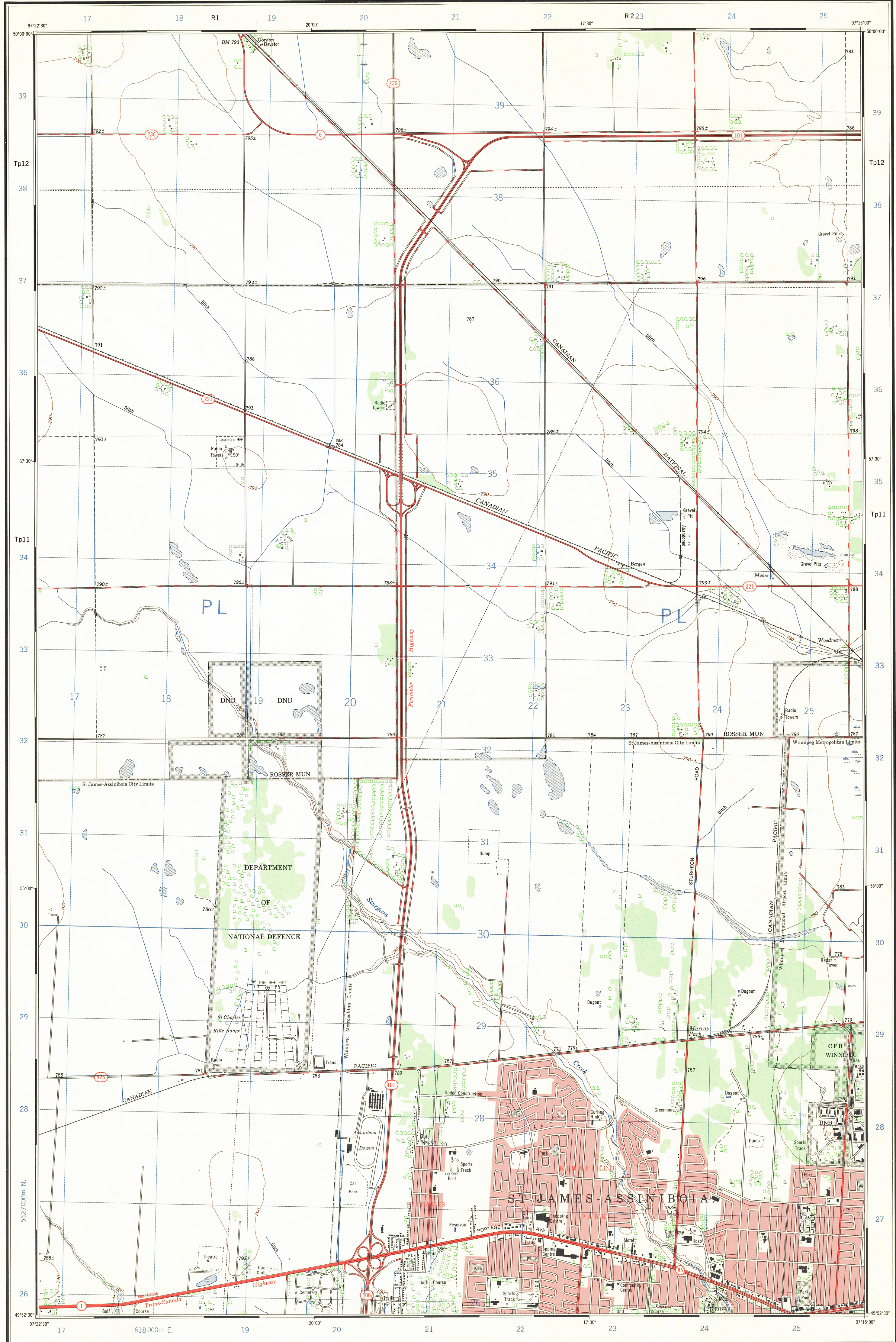


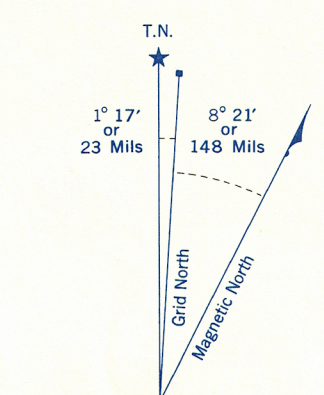
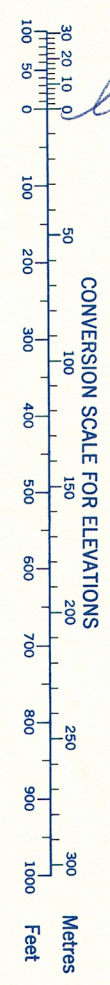
Ce document est le produit d'une numérisation par balayage de la publication originale.

This document was produced by scanning the original publication.

Refer to this map as: 62 H/14f EDITION 2 MCE SERIES A 841



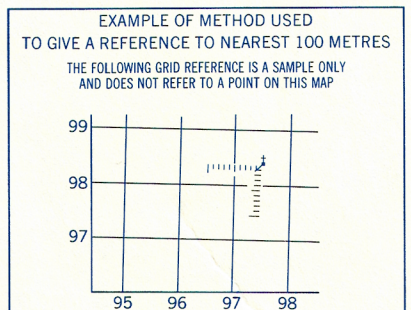
See new Bdy Information of Winnipeg on file in Data Centre 8/12/71  
B. Martin



Use diagram only to obtain numerical values. APPROXIMATE MEAN DECLINATION 1969 FOR CENTRE OF MAP. Annual change decreasing 1.1'

ONE THOUSAND METRE UNIVERSAL TRANSVERSE MERCATOR GRID ZONE 14

GRID ZONE DESIGNATION	100,000 M. SQUARE IDENTIFICATION
14 U	PL



REFERENCE POINT	CHURCH (as above)
EASTING: Read number on grid line immediately to left of point. Estimate tenths of a square from this line eastward to point.	97.5
NORTHING: Read number on grid line immediately below point. Estimate tenths of a square from this line northward to point.	97.5
EXAMPLE MILITARY GRID REFERENCE 975984	
Nearest similar grid reference 100,000 metres (about 63 miles)	

First edition map updated by the SURVEYS AND MAPPING BRANCH, DEPARTMENT OF ENERGY, MINES AND RESOURCES. Information depicted current as of 1969. Printed 1973.

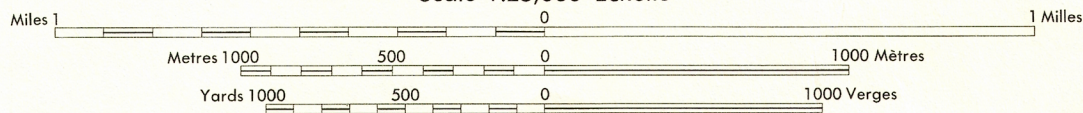
Copies may be obtained from the Canada Map Office, Department of Energy, Mines and Resources, Ottawa, or your nearest map dealer.

© Canada Copyrights Reserved 1973

# ST. CHARLES MANITOBA

EAST OF PRINCIPAL MERIDIAN - EST DU MÉRIDIEN PRINCIPAL

Scale 1:25,000 Échelle



CONTOUR INTERVAL 10 FEET  
Elevations in Feet above Mean Sea Level  
North American Datum 1927  
Transverse Mercator Projection

ÉQUIDISTANCE DES COURBES 10 PIEDS  
Élévations en pieds au-dessus du niveau moyen de la mer  
Système de référence géodésique nord-américain, 1927  
Projection transverse de Mercator

Roads:	Routes:
hard surface, all weather.....	pavée, toute saison.....
hard surface, all weather.....	pavée, toute saison.....
loose or stabilized surface, all weather.....	gravier aggloméré, toute saison.....
loose surface, dry weather.....	de gravier, période sèche.....
trail or portage.....	de terre.....
Railway, normal gauge, single track.....	Chemin de fer, voie unique (écartement normal).....
Horizontal control point, with elevation.....	Point géodésique, avec cote.....
Bench mark, with elevation.....	Repère de nivellement, avec cote.....
Spot elevation, precise.....	Point coté, précis.....
Mine or open cut.....	Mine ou fosse à ciel ouvert.....

Building.....	Bâtiment.....	Church.....	Église.....
School.....	École.....	Post Office.....	Bureau de poste.....
Cemetery.....	Cimetière.....	Navigation Light.....	Feu de navigation.....
Rock, bare or wash.....	Roche, nue ou à fleur d'eau.....	Power transmission line.....	Ligne de transport d'énergie.....
River with bridge.....	Rivière avec pont.....	Rapids, Falls, large small.....	Rapides, Chutes, grands, petits.....
Lake intermittent, indefinite.....	Lac intermittent, indéfini.....	Marsh or Swamp.....	Marais ou marécage.....
Depression contours.....	Courbes de cuvette.....	Woods.....	Bois.....
Trees.....	Arbres.....	Vineyard, Orchard.....	Vignoble, Verger.....

TABLEAU D'ASSEMBLAGE DU SYSTÈME NATIONAL DE RÉFÉRENCE CARTOGRAPHIQUE			
97°30'00"	62°34'	62°36'	62°38'
50°07'30"	62°34'	62°36'	62°38'
49°45'00"	62°34'	62°36'	62°38'
97°30'00"	62°34'	62°36'	62°38'
50°07'30"	62°34'	62°36'	62°38'
49°45'00"	62°34'	62°36'	62°38'

INDEX TO ADDING MAPS OF THE NATIONAL TOPOGRAPHIC SYSTEM