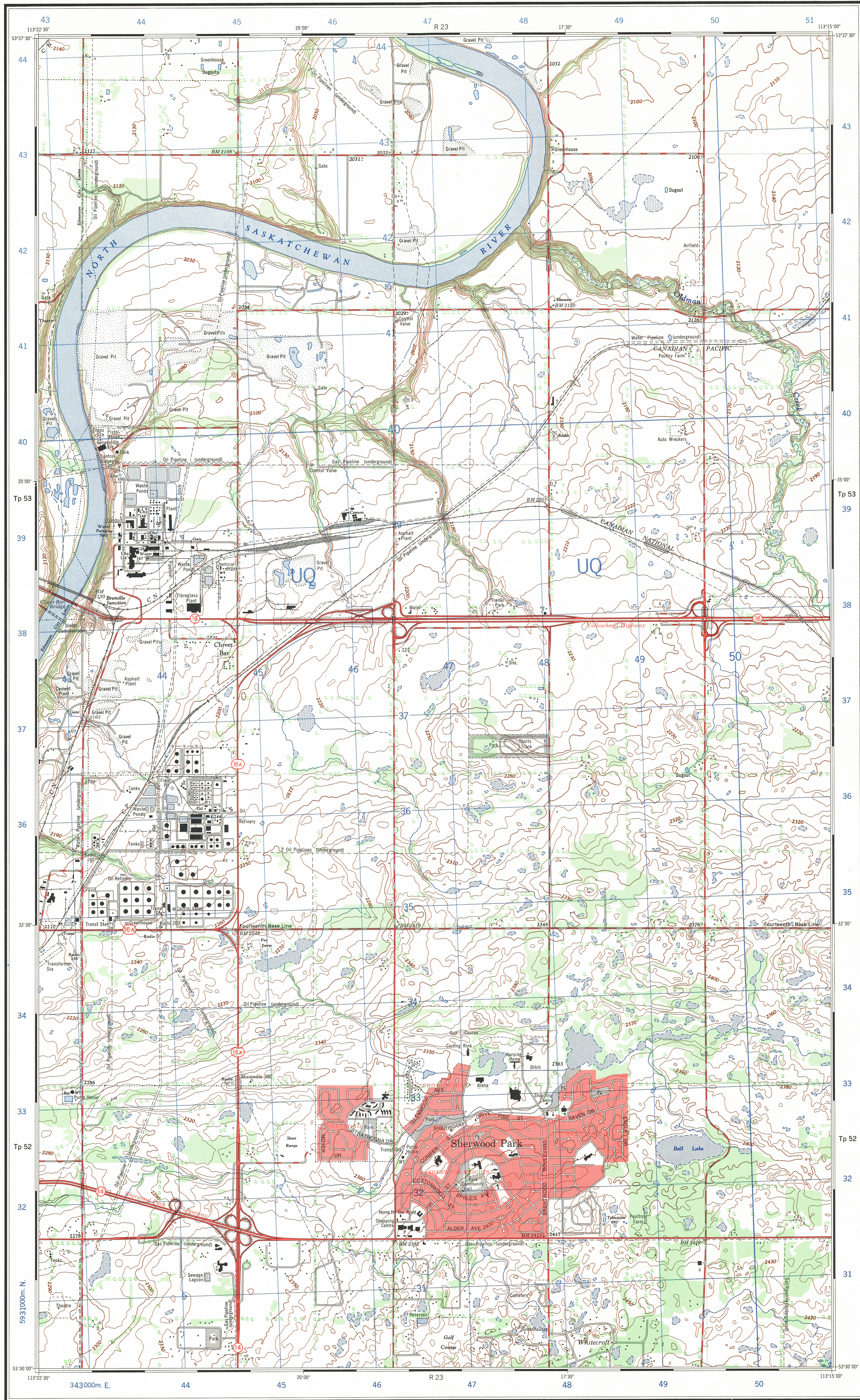


Refer to  
this map as:  
83 H/11c  
EDITION 2 MCE  
SERIES A 841



CONVERSION SCALE FOR ELEVATIONS  
0 100 200 300 400 500 600 700 800 900 1000  
Feet  
0 30 60 90 120 150 180 210 240 270 300  
Meters

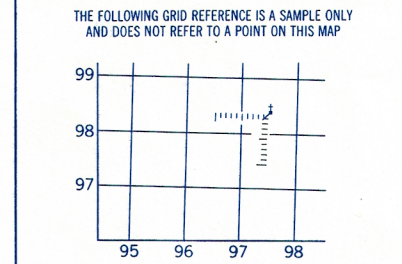


Use diagram only to obtain numerical values.  
APPROXIMATE MEAN DECLINATION 1972  
FOR CENTRE OF MAP  
Annual change decreasing 3.6'

ONE THOUSAND METRE  
UNIVERSAL TRANSVERSE MERCATOR GRID  
ZONE 12

GRID ZONE DESIGNATION	100,000 M. SQUARE IDENTIFICATION
12 U	U Q

EXAMPLE OF METHOD USED  
TO GIVE A REFERENCE TO NEAREST 100 METRES  
THE FOLLOWING GRID REFERENCE IS A SAMPLE ONLY  
AND DOES NOT REFER TO A POINT ON THIS MAP



REFERENCE POINT	CHURCH (as above)
EASTING: Read number on grid line immediately to left of point. Estimate tenths of a square from this line eastward to point.	97 5 975
NORTHING: Read number on grid line immediately below point. Estimate tenths of a square from this line northward to point.	98 4 984

EXAMPLE MILITARY GRID REFERENCE 975984  
Nearest similar grid reference (about 63 miles)

Produced by the SURVEYS AND MAPPING BRANCH,  
DEPARTMENT OF ENERGY, MINES AND RESOURCES.  
Culture check 1970. Printed 1973.

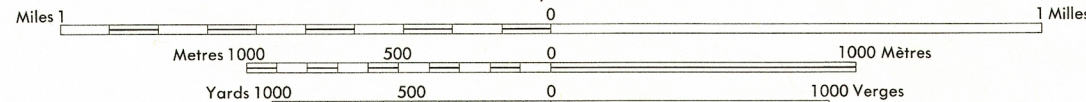
Copies may be obtained from the Canada Map Office,  
Department of Energy, Mines and Resources, Ottawa,  
or your nearest map dealer.

© Canada Copyrights Reserved 1973

## CLOVER BAR ALBERTA

WEST OF FOURTH MERIDIAN - OUEST DU QUATRIÈME MÉRIDIEN

Scale 1:25,000 Échelle



CONTOUR INTERVAL 10 FEET  
Elevations in Feet above Mean Sea Level

North American Datum 1927  
Transverse Mercator Projection

COUDESSE DE COURBES 10 PIEDS  
Élevations en pieds au-dessus du niveau moyen de la mer

Système de référence géodésique nord-américain, 1927  
Projection transverse de Mercator

Roads:	Routes:	duel highway	more than 2 lanes
hard surface, all weather	pavée, toute saison	2 chaussées séparées	plus de 2 voies
hard surface, all weather	pavée, toute saison	2 lanes	moins de 2 voies
loose or stabilized surface, all weather	gravier aggloméré, toute saison	2 lanes or more	moins de 2 voies
loose surface, dry weather	de gravier, période sèche	2 voies ou plus	moins de 2 voies
cart track	de terre		
trail or portage	sentier ou portage		
Railway, normal gauge, single track	Chemin de fer, voie unique (écartement normal)	single track	voie d'écartement
Horizontal control point, with elevation	Point géodésique, avec cote	454	454
Bench mark, with elevation	Repère de nivellement, avec cote	BM 157	BM 157
Spot elevation, precise	Point coté, précis	450	450
Mine or open cut	Mine ou fosse à ciel ouvert		

Building	Bâtiment	Church	Eglise
School	École	Post Office	Bureau de poste
Cemetery	Cimetière	Navigation Light	Feu de navigation
Rock, bare or awash	Roche, nue ou à fleur d'eau		
Power transmission line	Ligne de transport d'énergie		
River with bridge	Rivière avec pont		
Rapids, Falls, large small	Rapides, Chutes, grands, petits		
Lake intermittent, indefinite	Lac intermittent, rive imprécise		
Marsh or Swamp	Marais ou marécage		
Depression contours	Courbes de cuvette		
Trees	Arbres		
Woods	Bois		
Vineyard, Orchard	Vignoble, Verger		

TABLEAU D'ASSEMBLAGE DU SYSTÈME NATIONAL DE RÉFÉRENCE CARTOGRAPHIQUE			
53°45'00"	83 H/11a	83 H/11f	83 H/11g
53°30'00"	83 H/11d	83 H/11c	83 H/11b
53°15'00"	83 H/11e	83 H/11f	83 H/11g
53°00'00"	83 H/11a	83 H/11f	83 H/11g

CLOVER BAR  
83 H/11c  
EDITION 2