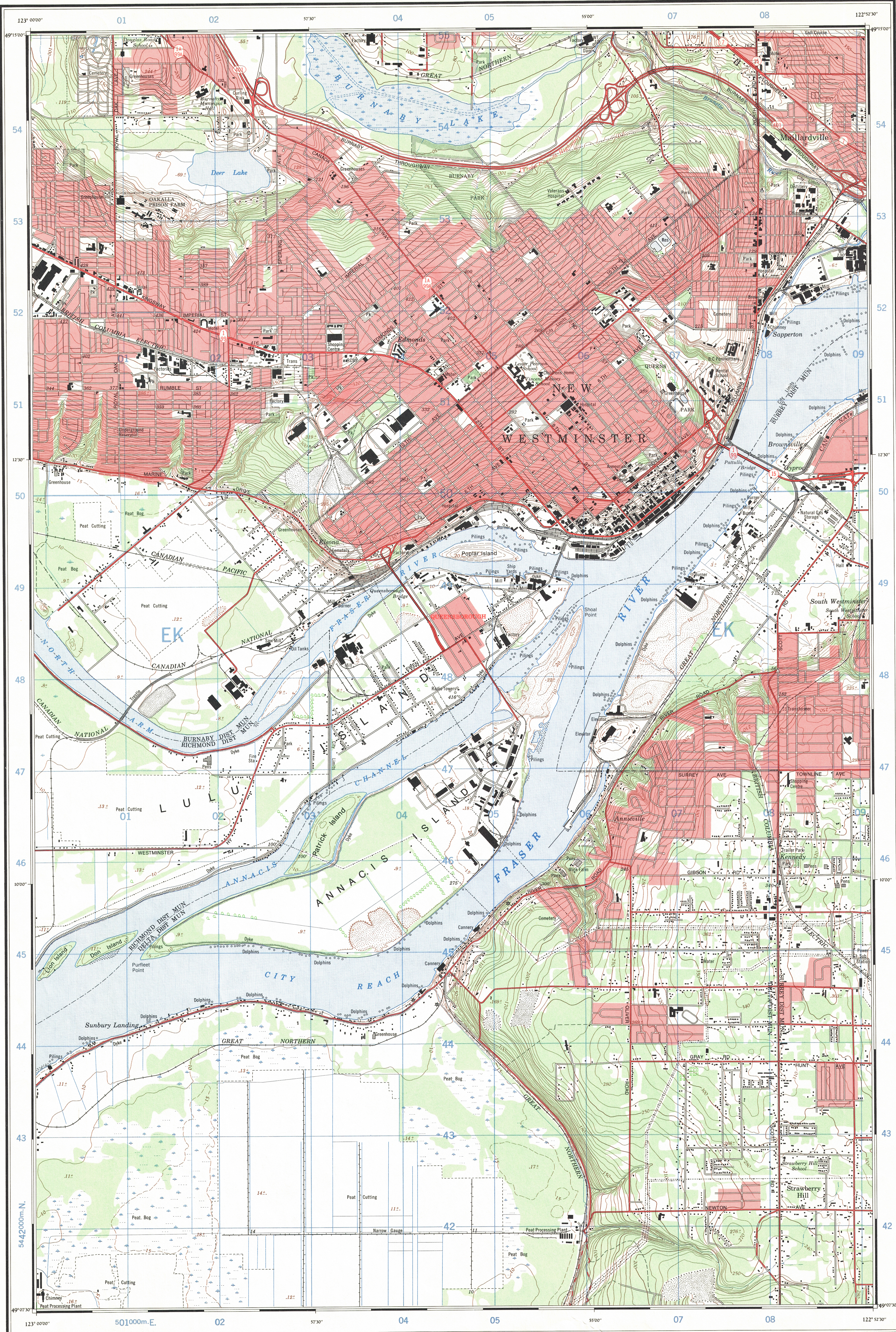


Refer to this map as:
92 G/2 e
EDITION 3 MCE
SERIES A 821

This document was produced
by scanning the original publication.
Ce document est le produit d'une
numérisation par balayage
de la publication originale.



CONVERSION SCALE FOR ELEVATIONS
Metres
Feet



Use diagram only to obtain numerical values.
APPROXIMATE MEAN DECLINATION 1968
FOR CENTRE OF MAP
Annual change decreasing 2.8'

GRID ZONE DESIGNATION	100,000 M. SQUARE IDENTIFICATION
10U	EK

TO GIVE A REFERENCE TO NEAREST 100 METRES
EXAMPLE: SCHOOL

EASTING: Read number on grid line immediately to left of point	04
Estimate tenths of a square from this line westward to point	9
NORTHING: Read number on grid line immediately below point	48
Estimate tenths of a square from this line northward to point	9
MILITARY GRID REFERENCE	049489

Nearest similar grid reference 100,000 metres (about 63 miles)

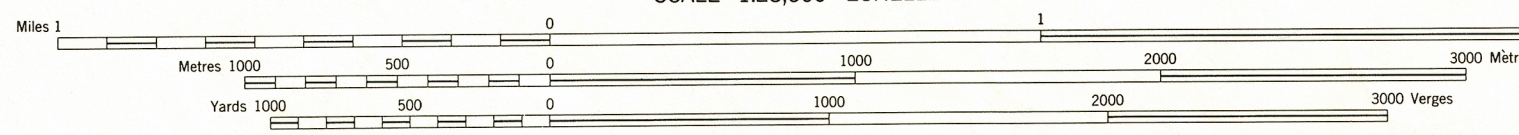
ONE THOUSAND METRE
UNIVERSAL TRANSVERSE MERCATOR GRID
ZONE 10

Produced by the MAPPING AND CHARTING ESTABLISHMENT,
DEPARTMENT OF NATIONAL DEFENCE
Information depicted current as of 1968. Printed 1970.
Copies may be obtained from the Map Distribution Office,
Department of Energy, Mines and Resources, Ottawa.

NEW WESTMINSTER

NEW WESTMINSTER DISTRICT
BRITISH COLUMBIA

SCALE 1:25,000 ÉCHELLE



CONTOUR INTERVAL 10 FEET
AUXILIARY CONTOUR INTERVAL 5 FEET
Elevations in Feet above Mean Sea Level

Transverse Mercator Projection
North American Datum 1927
MAGNETIC DECLINATION 22° 32' EAST
AT CENTRE OF MAP 1968
Annual change decreasing 2.8'

ÉQUIDISTANCE DES COURBES 10 PIEDS
ÉQUIDISTANCE DES COURBES AUXILIAIRES 5 PIEDS
Élevations en pieds au-dessus du niveau moyen de la mer

Projection transverse de Mercator
Réseau géodésique nord-américain unifié 1927
DÉCLINAISON MAGNÉTIQUE AU CENTRE
DE LA FEUILLE EN 1968: 22° 32' EST
Variation annuelle décroissante 2,8'

Publié par le SERVICE DE CARTOGRAPHIE,
MINISTÈRE DE LA DÉFENSE NATIONALE.
Renseignements à jour en 1968. Imprimé en 1970.
Ces cartes sont en vente au Bureau de distribution des cartes,
ministère de l'Énergie, des Mines et des Ressources, Ottawa.

TABLEAU D'ASSEMBLAGE DU SYSTÈME NATIONAL
DE RÉFÉRENCE CARTOGRAPHIQUE

92G/6a	92G/7a	92G/7c
92G/3b	92G/2b	92G/2f
92G/3a	92G/2d	92G/2c

INDEX TO ADJOINING MAPS OF
THE NATIONAL TOPOGRAPHIC SYSTEM

NEW WESTMINSTER
92G/2e
EDITION 3