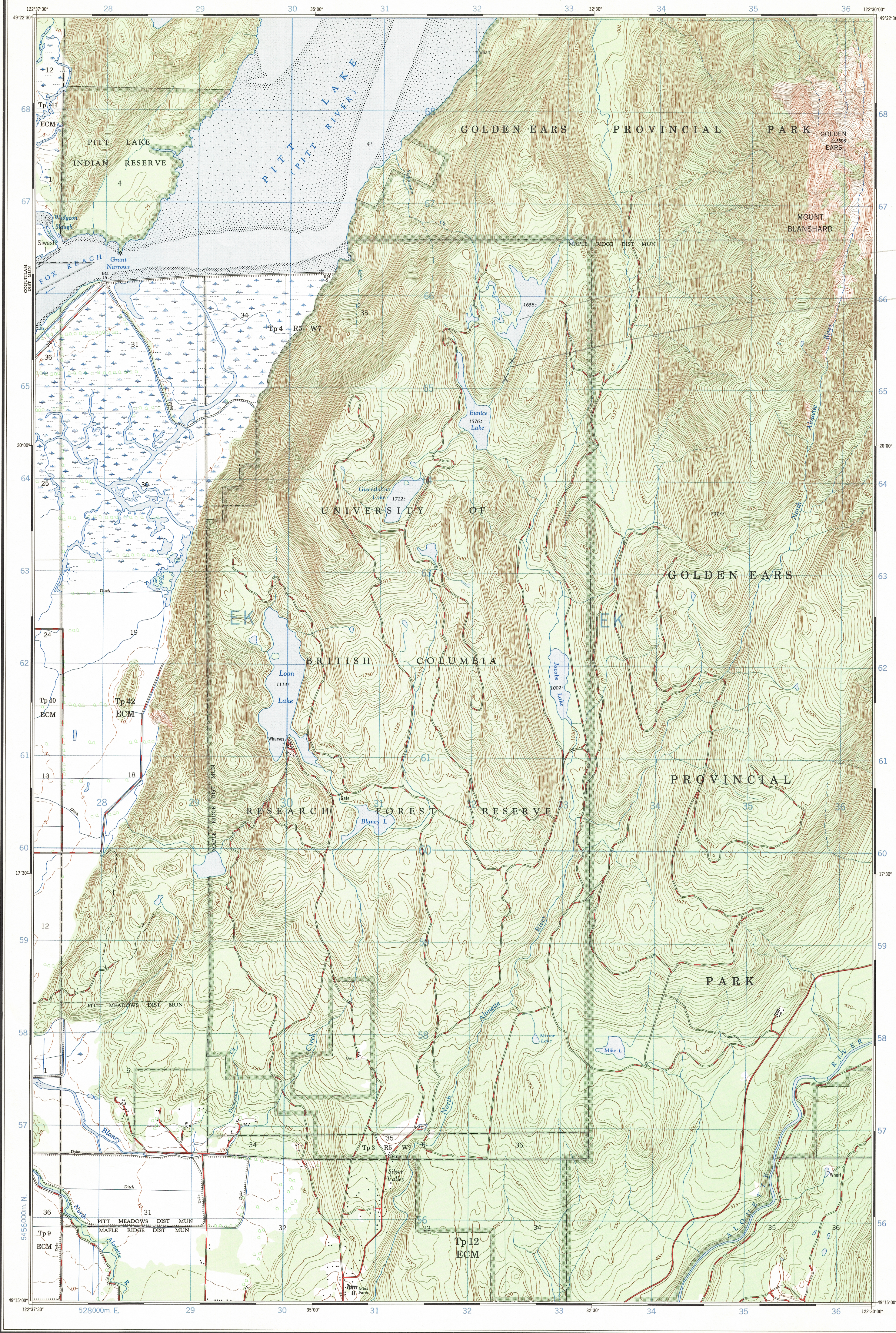


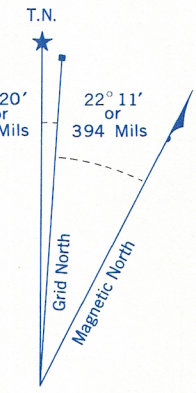
Refer to this map as: 92 G/7a
EDITION 2 MCE
SERIES A 821



Katherine L.

select direction of
flow & drainage
out of Katherine L.
l.r.m.
12/2/71

CONVERSION SCALE FOR ELEVATIONS
Feet
Metres

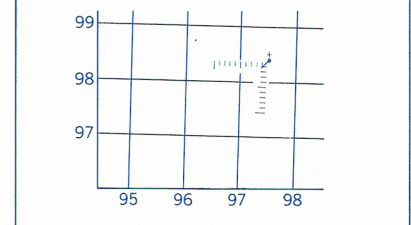


Use diagram only to obtain numerical values.
APPROXIMATE MEAN DECLINATION 1969
FOR CENTRE OF MAP
Annual change decreasing 2.8'

ONE THOUSAND METRE
UNIVERSAL TRANSVERSE MERCATOR GRID
ZONE 10

GRID ZONE DESIGNATION	100,000 M. SQUARE IDENTIFICATION
10 U	EK

EXAMPLE OF METHOD USED
TO GIVE A REFERENCE TO NEAREST 100 METRES
THE FOLLOWING GRID REFERENCE IS A SAMPLE ONLY
AND DOES NOT REFER TO A POINT ON THIS MAP



REFERENCE POINT	CHURCH (as above)
EASTING: Read number on grid line immediately to left of point. Estimate tenths of a square from this line eastward to point.	97 5 975
NORTHING: Read number on grid line immediately below point. Estimate tenths of a square from this line northward to point.	98 4 984
EXAMPLE MILITARY GRID REFERENCE	975984
Nearest similar grid reference	100,000 metres (about 63 miles)

This document was produced
by scanning the original publication.
Ce document est le produit d'une
numérisation par balayage
de la publication originale.

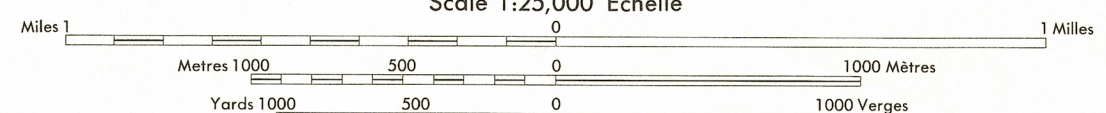
First edition map updated by the SURVEYS AND MAPPING BRANCH,
DEPARTMENT OF ENERGY, MINES AND RESOURCES. Information
current as of 1968. Printed 1970.

Copies may be obtained from the Map Distribution Office,
Department of Energy, Mines and Resources, Ottawa.

LOWER PITT LAKE

NEW WESTMINSTER DISTRICT
BRITISH COLUMBIA

Scale 1:25,000 Échelle



CONTOUR INTERVAL 25 FEET
AUXILIARY CONTOUR INTERVAL 5 FEET
Elevations in Feet above Mean Sea Level
Transverse Mercator Projection
North American Datum 1927

EQUIDISTANCE DES COURBES 25 PIEDS
EQUIDISTANCE DES COURBES AUXILIAIRES 5 PIEDS
Élévations en pieds au-dessus du niveau moyen de la mer
Projection Transverse de Mercator
Système de référence géodésique nord-américain 1927

Building.....	Bâtiment.....	Church.....	Église.....
School.....	École.....	Post Office.....	Bureau de poste.....
Cemetery.....	Cimetière.....	Navigation Light.....	Feu de navigation.....
Rock, bare or awash.....	Roche, nue ou à fleur d'eau.....		
Power transmission line.....	Ligne de transport d'énergie.....		
River with bridge.....	Rivière avec pont.....		
Rapids, Falls, large small.....	Rapides, Chutes, grands, petits.....		
Lake intermittent, indefinite.....	Lac intermittent, indéfini.....		
Marsh or Swamp.....	Marais ou marécage.....		
Depression contours.....	Courbes de cuvette.....		
Trees.....	Arbres.....		
Woods.....	Bois.....		
Vineyard, Orchard.....	Vignoble, Verger.....		

TABEAU D'ASSEMBLAGE DU SYSTÈME NATIONAL
DE RÉFÉRENCE CARTOGRAPHIQUE

122°45'00"	122°45'00"	122°45'00"
49°30'00"	92 G/7a	92 G/7b
	92 G/7b	92 G/7c
	92 G/7c	92 G/7d
49°07'30"	92 G/7e	92 G/7f
122°22'30"		

INDEX TO ADDING MAPS OF
THE NATIONAL TOPOGRAPHIC SYSTEM

LOWER PITT LAKE
92 G/7a
EDITION 2