

ROADS AND RELATED FEATURES

HARD SURFACE, ALL WEATHER  
LOOSE SURFACE  
CART TRACK, WINTER ROAD OR ROAD UNDER CONSTRUCTION  
TRAIL, CUT LINE, PORTAGE  
BUILT-UP AREA  
RAILWAY, SIDING, STATION, STOP  
BRIDGE  
SEAPLANE BASE, ANCHORAGE

LANDMARK FEATURES

HOUSE, BARN  
CHURCH, SCHOOL  
POST OFFICE  
HISTORICAL SITE  
TOWERS: FIRE, RADIO  
WELL: OIL, GAS  
TANK: OIL, GASOLINE, WATER  
TELEPHONE LINE  
POWER TRANSMISSION LINE  
MINE  
CUTTING, EMBANKMENT  
GRAVEL PIT

BOUNDARIES AND SURVEY CONTROL

INTERNATIONAL, PROVINCIAL, BOUNDARY MONUMENT  
COUNTY, DISTRICT  
TOWNSHIP, PARISH-SURVEYED  
TOWNSHIP, DLS - SURVEYED, UNSURVEYED

SECTION CORNERS

MUNICIPALITY  
INDIAN RESERVE, PARK, ETC  
HORIZONTAL SURVEY POINT  
BENCH MARK WITH ELEVATION  
SPOT ELEVATION, PRECISE: LAND, WATER

DRAINAGE AND RELATED FEATURES

STREAM, SHORELINE, INDEFINITE  
DIRECTION OF FLOW  
LAKE, INTERMITTENT LAKE  
INUNDATED LAND  
MARSH, SWAMP (WOODED)  
DRY RIVER BED WITH CHANNELS  
SAND, ABOVE, IN WATER  
STRING BOG  
TUNDRA: PONDS, POLYGONS  
RAPIDS, FALLS, RAPIDS  
FORESHORE FLATS  
ROCK  
DAM  
WHARF  
DITCH

RELIEF FEATURES

CONTOURS  
APPROXIMATE CONTOURS  
DEPRESSION CONTOUR  
SPOT ELEVATION, APPROXIMATE: LAND, WATER  
ESKER  
PINGO  
SAND, SAND DUNES  
PALSA BOG  
WOODED AREA  
CLEARED AREA

LEGEND - L G NDE

ROUTES ET OUVRAGES CONNEXES

SURFACE PAVE E, TOUTES SAISONS  
GRAVIER  
CHEMIN DE TERRE, D'HIVER OU ROUTE EN CONSTRUCTION  
SENTIER, PERC E, PORTAGE  
AGGLOM RATION  
CHEMIN DE FER, VOIE D' V TEMENT, GARE, ARR T  
PONT  
HYDRO A ROPORT, MOULAGE  
POINTS DE REP RE  
MAISON, GRANGE  
 GLISE,  COLE  
BUREAU DE POSTE  
LIEU HISTORIQUE  
TOURS: FEU, RADIO  
PUITS: P TROLE, G Z  
R SERVOIR: P TROLE, ESSENCE, EAU  
LIGNE T L PHONIQUE  
LIGNE DE TRANSPORT D' NERGIE  
MINE  
D BLAI, REMBLAI  
GRAVIER

FRONTI RES ET POINTS DE R F RENCES

INTERNATIONALE, PROVINCIALE, BORNE FRONTI RE  
COMT , DISTRICT  
CANTON, PAROISSE - ARPENT E  
CANTON, PAROISSE - NON ARPENT E

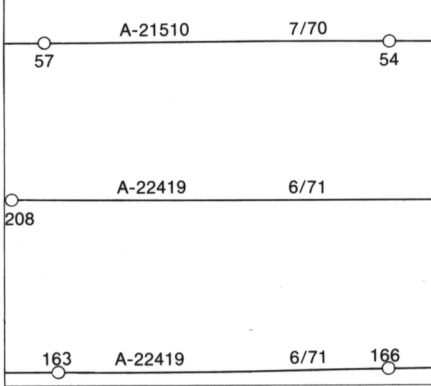
COINS DE SECTION

MUNICIPALIT   
R SERVE INDIENNE, PARC, ETC  
REP RE PLANIM TRIQUE  
REP RE DE NIVELLEMENT AVEC COTE  
POINT COT , PR CIS: SUR TERRE, SUR L'EAU

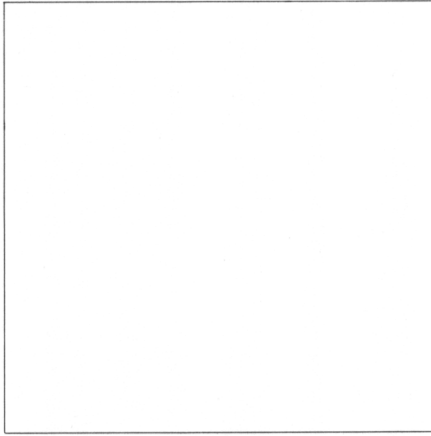
DRAINAGE ET OUVRAGES CONNEXES

COURS D'EAU, RIVE, IMPRECISE  
DIRECTION DU COURANT  
LAG, LAC INTERMITTENT  
TERRAIN INOND   
MARAIS, MAR C GE (BOIS )  
LIT DE COURS D'EAU VAIN AVEC CHENAUX  
SABLE: AU DESSUS, DANS L'EAU  
MAR C GE EN ENFILADE  
TOUNDRA:  TANGS, SOLS POLYAGONAUX  
RAPIDES, CHUTES, RAPIDES  
ESTRANS  
ROCHE  
BARRAGE  
QUAI  
FOSSE  
RELIEF  
COURBES DE NIVEAU  
COURBES DE NIVEAU APPROXIMATIVES  
COURBE DE CUVETTE  
POINT COT , APPROXIMATIF: SUR TERRE, SUR L'EAU  
ESKER  
PINGO  
SABLE, DUNES  
PALSE  
REGION BOIS E  
REGION D BOIS E

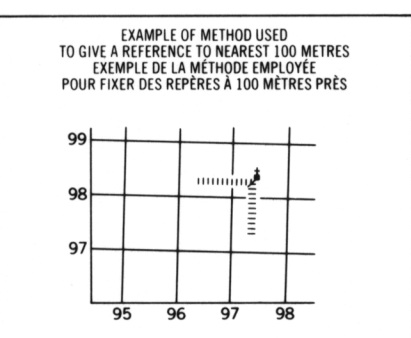
PHOTOGRAPHY PHOTOGRAPHIE  
COMPILATION A-21510  
RESTITUTION 7/70



REVISION



GRID ZONE DESIGNATION  
DESIGNATION DE LA ZONE DU QUADRILLAGE  
11W  
100,000 M. SQUARE IDENTIFICATION  
IDENTIFICATION DU CARRE DE 100,000 M.  
NE



REFERENCE POINT CHURCH -  GLISE (as above)  
POINT DE R F RENCE (ci-dessus)  
EASTING: Road number on grid line immediately to left of point.  
LONGITUDE: EST. Note the chiffre de la ligne du quadrillage imm diatement   gauche du rep re.  
Estimate tenths of a square from this line eastward to point.  
Estimer le nombre de dixi mes du carr  entre cette ligne et le rep re en direction est.  
NORTHING: Road number on grid line immediately below point.  
LATITUDE: NORD. Note the chiffre de la ligne du quadrillage imm diatement en-dessous du rep re.  
Estimate tenths of a square from this line northward to point.  
Estimer le nombre de dixi mes du carr  entre cette ligne et le rep re en direction nord.  
GRID REFERENCE SAMPLE  
EXEMPLE DU QUADRILLAGE  
975964  
Nearest similar grid reference 100,000 metres (about 63 miles)  
La prochaine r f rence similaire est   100,000 m tres (environ 63 milles)

ONE THOUSAND METRE  
UNIVERSAL TRANSVERSE MERCATOR GRID  
ZONE 11  
QUADRILLAGE DE MILLE M TRES  
UNIVERSEL TRANSVERSE DE MERCATOR

86 N/10	86 N/9	86-O/12
86 N/7	86 N/8	86-O/5
86 N/2	86 N/1	86-O/4

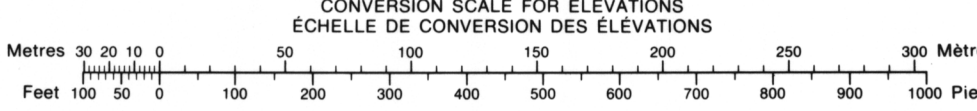
The 1975 MAGNETIC BEARING is 41 08' (731 mils) EAST of GRID NORTH.  
ANNUAL CHANGE DECREASING 12.0'  
GRID NORTH is 0 42' (12 mils) EAST of TRUE NORTH for centre of map.  
Le REP RE MAGN TIQUE en 1975 est   41 08' (731 mils) EST de NORD DU QUADRILLAGE.  
VARIATION ANNUELLE D CROISSANTE 12.0'  
NORD DU QUADRILLAGE est 0 42' (12 mils)   l'est du NORD G OGRAPHIQUE au centre de la carte.

THE MAGNETIC COMPASS MAY BE ERRATIC IN THIS AREA  
LA BOUSSOLE S RA PEUT- TRE INSTABLE DANS CETTE REGION

TUKTUVAK LAKE  
DISTRICT OF MACKENZIE  
NORTHWEST TERRITORIES

 L VATIONS EN M TRES AU-DESSUS DU NIVEAU MOYEN DE LA MER  
 QUIDISTANCE DES COURBES 10 M TRES

 TABLIE PAR LA DIRECTION DES LEV S ET DE LA CARTOGRAPHIE, MINIST RE DE L' NERGIE, DES MINES ET DES RESSOURCES, OTTAWA, EN 1975.  
CES CARTES SONT EN VENTE AU BUREAU DES CARTES DU CANADA, MINIST RE DE L' NERGIE, DES MINES ET DES RESSOURCES, OTTAWA, OU CHEZ LE VENDEUR LE PLUS PR S.  
  CANADA 1975. TOUS DROITS R SERV S



PRODUCED BY SURVEYS AND MAPPING BRANCH  
DEPARTMENT OF ENERGY, MINES AND RESOURCES  
OTTAWA, 1975  
COPIES MAY BE OBTAINED FROM THE CANADA MAP OFFICE  
DEPARTMENT OF ENERGY, MINES AND RESOURCES, OTTAWA,  
OR YOUR NEAREST MAP DEALER.

ELEVATIONS IN METRES ABOVE MEAN SEA LEVEL  
CONTOUR INTERVAL 10 METRES  
NORTH AMERICAN DATUM 1927  
TRANSVERSE MERCATOR PROJECTION

