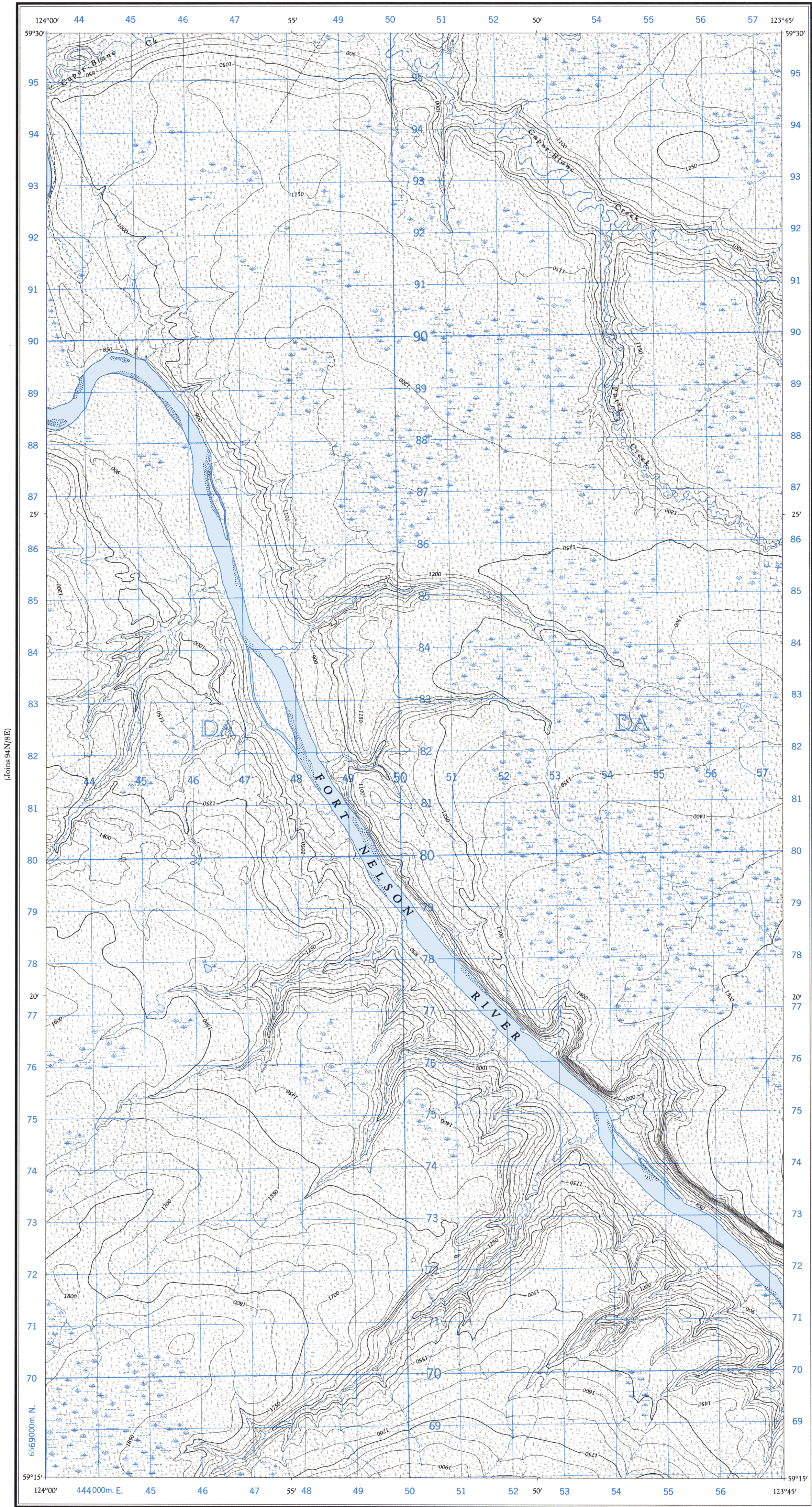
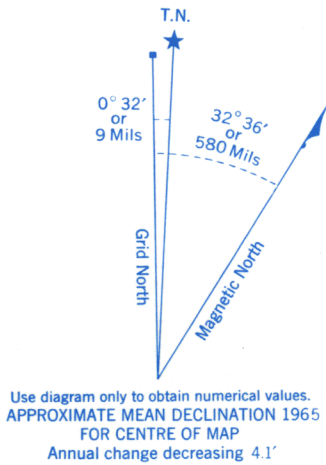


Refer to
this map as:

94 O/5 W
EDITION 1 ASE
SERIES A 721



(Joins Capot-Blanc Creek 94-O/5/E)



100,000 M. SQUARE IDENTIFICATION	
GRID ZONE DESIGNATION	10 V
DA	
TO GIVE A REFERENCE TO NEAREST 100 METRES	
EXAMPLE: STREAM JUNCTION	
EASTING: Read number on grid line immediately to left of point	52
Estimate tenths of a square from this line eastward to point.	2
NORTHING: Read number on grid line immediately below point	522
Estimate tenths of a square from this line northward to point.	94
MILITARY GRID REFERENCE	522941
Nearest similar grid reference 100,000 metres (about 63 miles)	

ONE THOUSAND METRE
UNIVERSAL TRANSVERSE MERCATOR GRID
ZONE 10

Compiled, 1964, by the SURVEYS AND MAPPING BRANCH,
DEPARTMENT OF MINES AND TECHNICAL SURVEYS,
from aerial photographs taken in 1954. Field surveys 1960. Printed 1966.

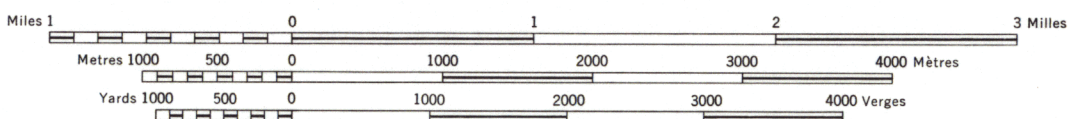
Copies may be obtained from the Map Distribution Office,
Department of Mines and Technical Surveys, Ottawa.

(Joins Etane Creek 94-O/4 W)

CAPOT-BLANC CREEK

PEACE RIVER DISTRICT
BRITISH COLUMBIA

SCALE 1:50,000 ÉCHELLE



CONTOUR INTERVAL 50 FEET
Elevations in Feet above Mean Sea Level
North American Datum 1927
Transverse Mercator Projection

ÉQUIDISTANCE DES COURBES: 50 PIEDS
Élévations en pieds au-dessus du niveau moyen de la mer
Réseau géodésique nord-américain unifié (1927)
Projection transverse de Mercator

Révisé en 1964, par la DIRECTION DES LEVÉS ET DE LA CARTOGRAPHIE,
MINISTÈRE DES MINES ET DES RELEVÉS TECHNIQUES, d'après des photo-
graphies aériennes prises en 1954. Levés sur le terrain en 1960. Imprimé en 1966.

Ces cartes sont en vente au Bureau de distribution des cartes,
ministère des Mines et des Relevés techniques, Ottawa.

Building Bâtiment	Barn Grange
School École	Post Office Bureau de poste
Church Église	Cemetery Cimetière
Lighthouse Phare		
River with bridge Rivière avec pont		
Stream, intermittent or dry Cours d'eau intermittent, ou à sec		
Lake intermittent, indefinite Lac intermittent, rive imprécise		
Marsh or Swamp Marais ou marécage		
Depression contours Courbes de cuvette		