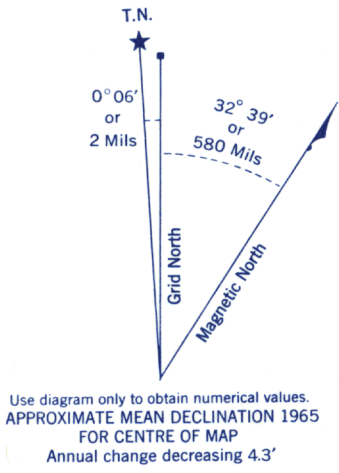


Refer to
this map as:

94 O/15W
EDITION 1 ASE
SERIES A 721

(Joins Maxhamish Lake 94-O/14E)

(Joins Emile Creek 94-O/15E)



GRID ZONE DESIGNATION	100,000 M. SQUARE IDENTIFICATION
10V	EB

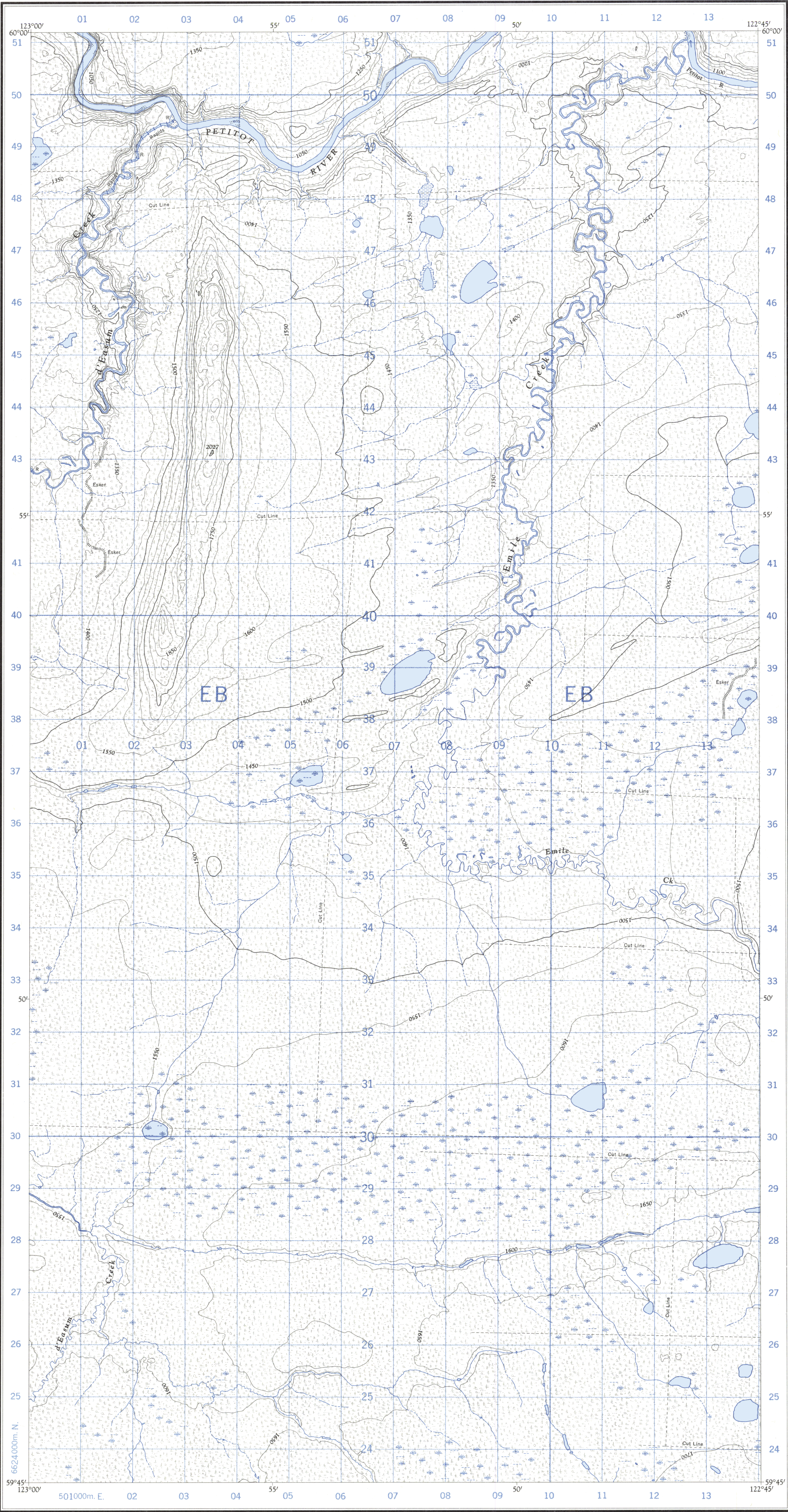
TO GIVE A REFERENCE TO NEAREST 100 METRES

EXAMPLE: POND

EASTING: Read number on grid line immediately to left of point. Estimate tenths of a square from this line eastward to point.	13 2 132
NORTHING: Read number on grid line immediately below point. Estimate tenths of a square from this line northward to point.	32 3 323
MILITARY GRID REFERENCE	132323

Nearest similar grid reference 100,000 metres (about 63 miles)

ONE THOUSAND METRE
UNIVERSAL TRANSVERSE MERCATOR GRID
ZONE 10



Compiled, 1964, by the SURVEYS AND MAPPING BRANCH,
DEPARTMENT OF MINES AND TECHNICAL SURVEYS,
from aerial photographs taken in 1956-57. Field surveys 1960. Printed
1966.

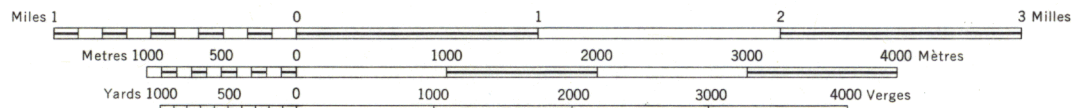
Copies may be obtained from the Map Distribution Office,
Department of Mines and Technical Surveys, Ottawa.

(Joins Tightfit Lake 94-O/10W)

EMILE CREEK

PEACE RIVER DISTRICT
BRITISH COLUMBIA

SCALE 1:50,000 ÉCHELLE



CONTOUR INTERVAL 50 FEET
Elevations in Feet above Mean Sea Level
North American Datum 1927
Transverse Mercator Projection

ÉQUIDISTANCE DES COURBES: 50 PIEDS
Élévations en pieds au-dessus du niveau moyen de la mer
Réseau géodésique nord-américain unifié (1927)
Projection transverse de Mercator

Rédigée en 1964, par la DIRECTION DES LEVÉS ET DE LA CARTOGRAPHIE,
MINISTÈRE DES MINES ET DES RELEVÉS TECHNIQUES, d'après des photo-
graphies aériennes prises en 1956-57. Levés sur le terrain en 1960. Imprimée en 1966.

Ces cartes sont en vente au Bureau de distribution des cartes,
ministère des Mines et des Relevés techniques, Ottawa.

- | | | | |
|-------------------------------|---|-------------|-----------------------|
| Building | Bâtiment | Barn | Grange |
| School | École | Post Office | Bureau de poste |
| Church | Église | Cemetery | Cimetière |
| Lighthouse | Phare | | |
| River with bridge | Rivière avec pont | | |
| Stream, intermittent or dry | Cours d'eau intermittent ou à sec | | |
| Lake intermittent, indefinite | Lac intermittent; rive imprécise | | |
| Marsh or Swamp | Marais ou marécage | | |
| Depression contours | Courbes de cuvette | | |