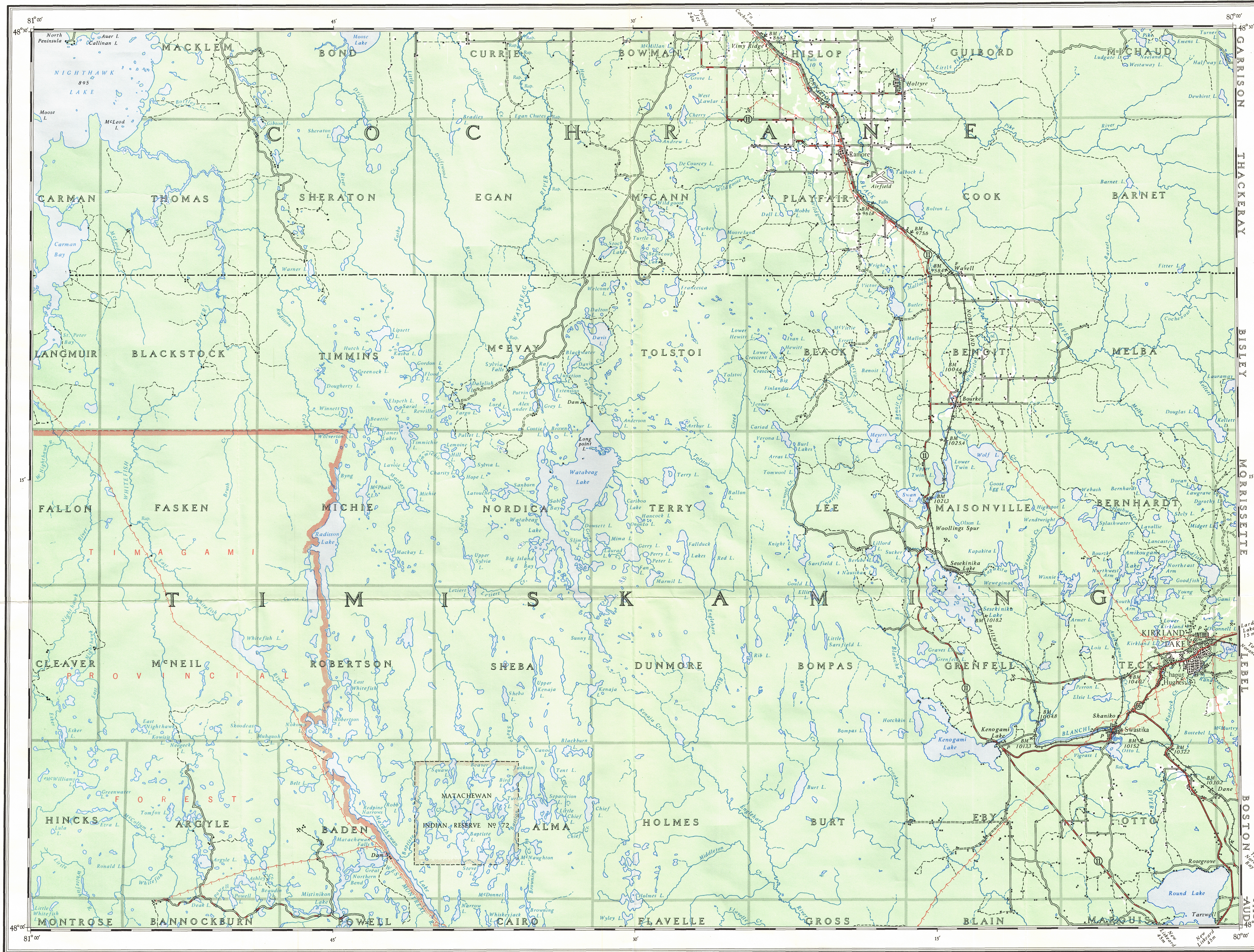
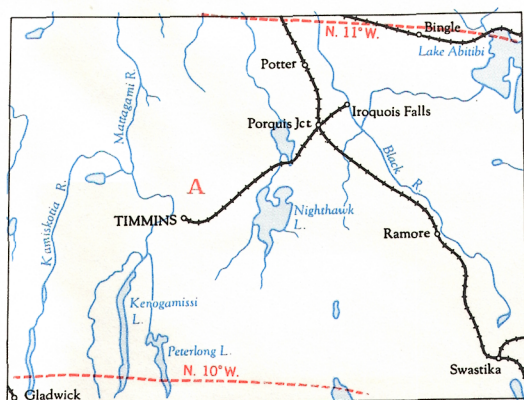


This document was produced
by scanning the original publication.
Ce document est le produit d'une
numérisation par balayage
de la publication originale.



THE DECLINATION OF THE COMPASS NEEDLE, 1948



The declination of the compass needle at any place along a dotted line is the declination given on that dotted line. At other places the declination is between those given on the neighboring dotted lines, thus at the place marked A, the declination is between N. 10° W. and 1° W. The yearly declinations of the compass needle are decreasing 6 minutes annually.

REFERENCE

Railway, Double Track
Single Track
Boundary, District or County
Township
Forest Reserve or Park
Indian Reserve
Hard Surface, Heavy Duty
Hard Surface, Medium Duty
Low Surface, Gravel and Gravel
Other Roads
Trail

KIRKLAND LAKE
ONTARIO

Scale 1:126,720 or 2 Miles to 1 Inch

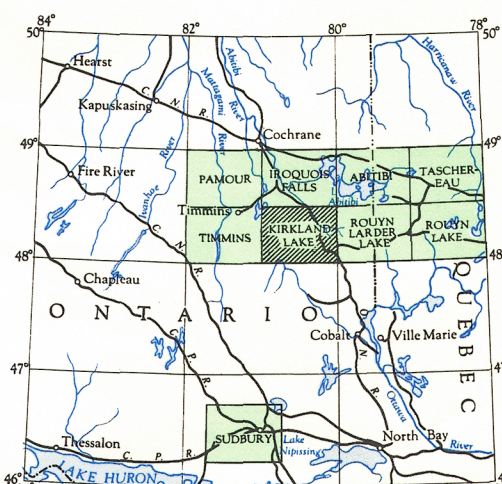
Miles 0 1 2 3 4 5 6 7 8 9 10

Copies may be obtained from the Map Distribution Office,
Department of Mines and Technical Surveys, Ottawa.

REFERENCE

Electric Power Line
Railroad or Ferry
Sandy or Marshy
Bridge
Dam
Building
Post Office
Mine or Open Cut
Spot Height (in feet)
Rock Mark
Wooded Area

TOPOGRAPHICAL SURVEY DIRECTORATE
SERVICE TOPOGRAPHIQUE
O.C. APPROVES RELEASE
C.O. APPROVE



NOTE: On the above index the sheets published are shown in red.

Reprint

42 A/SE