

Ce document est le produit d'une
numérisation par balayage
de la publication originale.

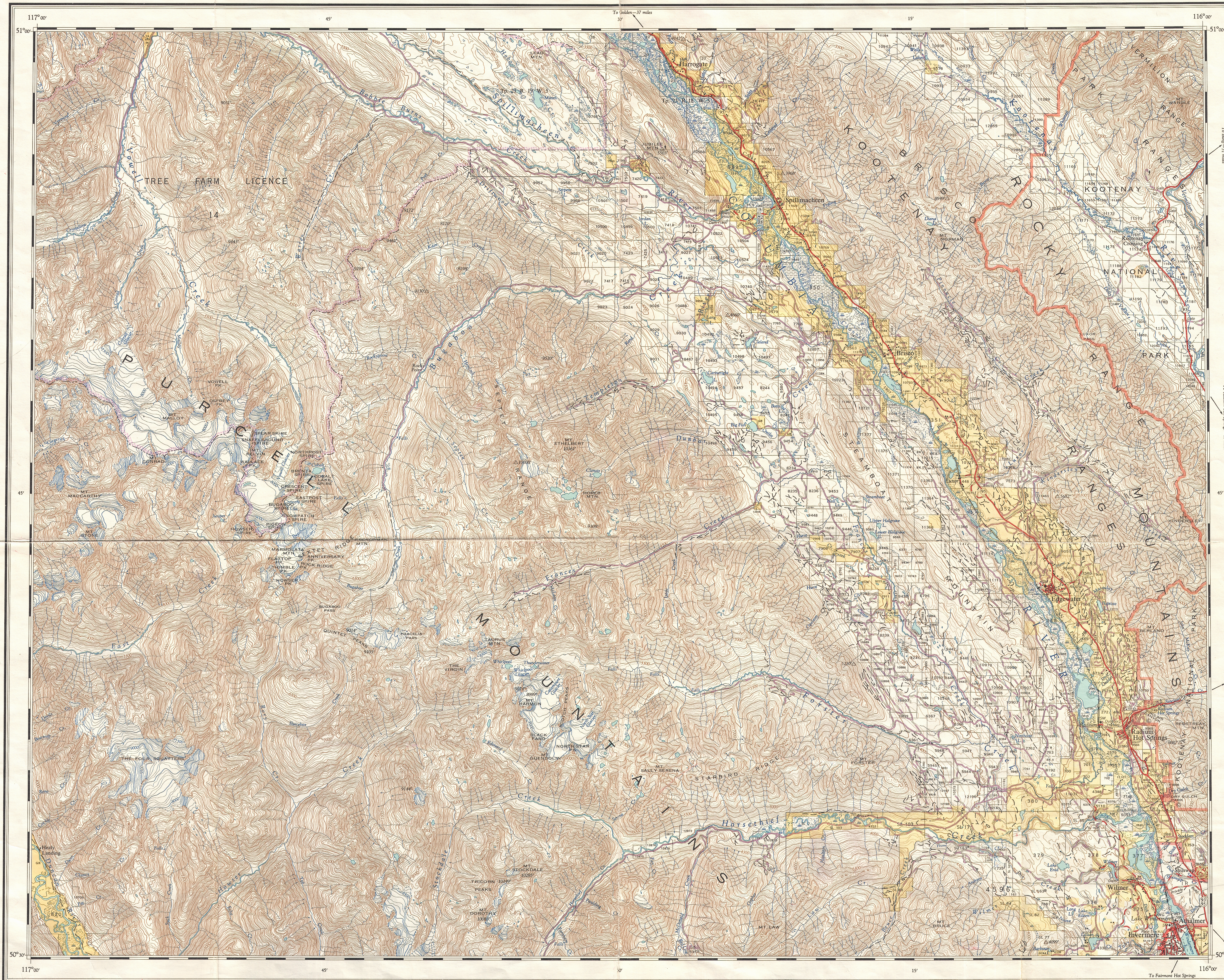
This document was produced
by scanning the original publication.

NATIONAL TOPOGRAPHIC SYSTEM

DEPARTMENT OF LANDS, FORESTS, AND WATER RESOURCES
BRITISH COLUMBIA
HONOURABLE R. G. VILLISTON, MINISTER
E. W. BASSETT, DEPUTY MINISTER OF LANDS
G. S. ANDREWS, DIRECTOR OF SURVEYS AND MAPPING

FIRST STATUS EDITION—September 15th, 1965.

SHEET 82 K/NE



First Status Edition, compiled and produced by Geographic Division, Surveys and Mapping Branch,
Department of Lands, Forests, and Water Resources, Victoria, B.C. 1964-65.

RELIABILITY
Planimetry compiled from Prov. Govt. air surveys
interim mapping, 1954 B.C. Govt. air photos 1951-52.
Contours compiled from mapping by Dept. of Mines and
Technical Surveys, Ottawa, 1950, 1957, and 1959.
Culture revised from B.C. Govt. air photos, 1960, 1963-64.

Copies of this map may be obtained from Geographic
Division, Surveys and Mapping Branch, Department of
Lands, Forests, and Water Resources, Victoria, B.C.

REFERENCE

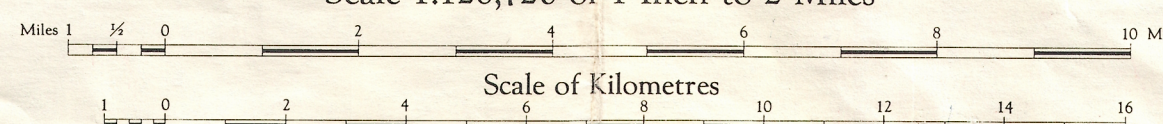
Land alienated or covered by application
under the Land Act
Surveyed Timber Lease, Licence, or Birth
Indian Reserve
Government Reserve
Land District Boundary
Provincial Forest Boundary
Tree Farm Licence
Municipality
Water Supply Area
Park
Park less than 7 acres
Campsite or Picnic Site
Power Service Location
Post Office
School
Church
Hospital
Building
Cemetery
Mine
Dike
Historic Monument
Mile Post



INVERMERE

BRITISH COLUMBIA
KOOTENAY LAND DISTRICT

Scale 1:126,720 or 1 Inch to 2 Miles



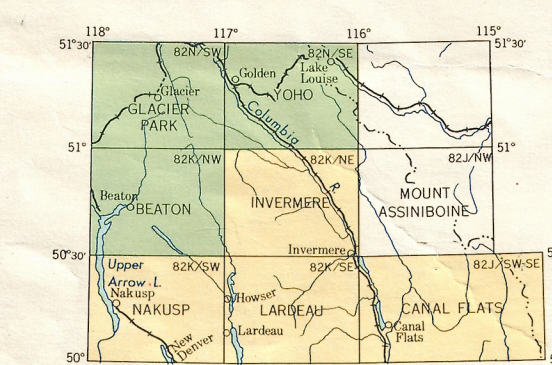
Magnetic Declination approximately 22°W East at centre of sheet, 1965.
Declining approximately 1°W annually

W. R. YOUNG, CHIEF GEOGRAPHER

REFERENCE

Road, Hard Surface, All Weather
Loose Surface, All Weather
Loose Surface, Less than 2 lanes
Four Wheel Drive
Trail
Railway
Main Telephone Line
Main Electric Power Line
Horizontal Control Station
Contours (Interval 100 feet)
Elevation in feet above mean sea-level
Intermittent Stream
Intermittent Lake or Seasonal Foundation
Swamp or Marsh
Glacier or Icefield
Spring
Dam
Water Gauge
Water Tank
Saw Mill
Gravel Pit
Customs Office
Navigation Light

Universal Transverse Mercator Projection



On the above map under the maps published are shown that:

With District for land status
Without

Government Agents at Invermere

Mineral Claims are not shown on this sheet.

INVERMERE, B. C.
SHEET 82 K/NE
FIRST STATUS EDITION

82
K/NE