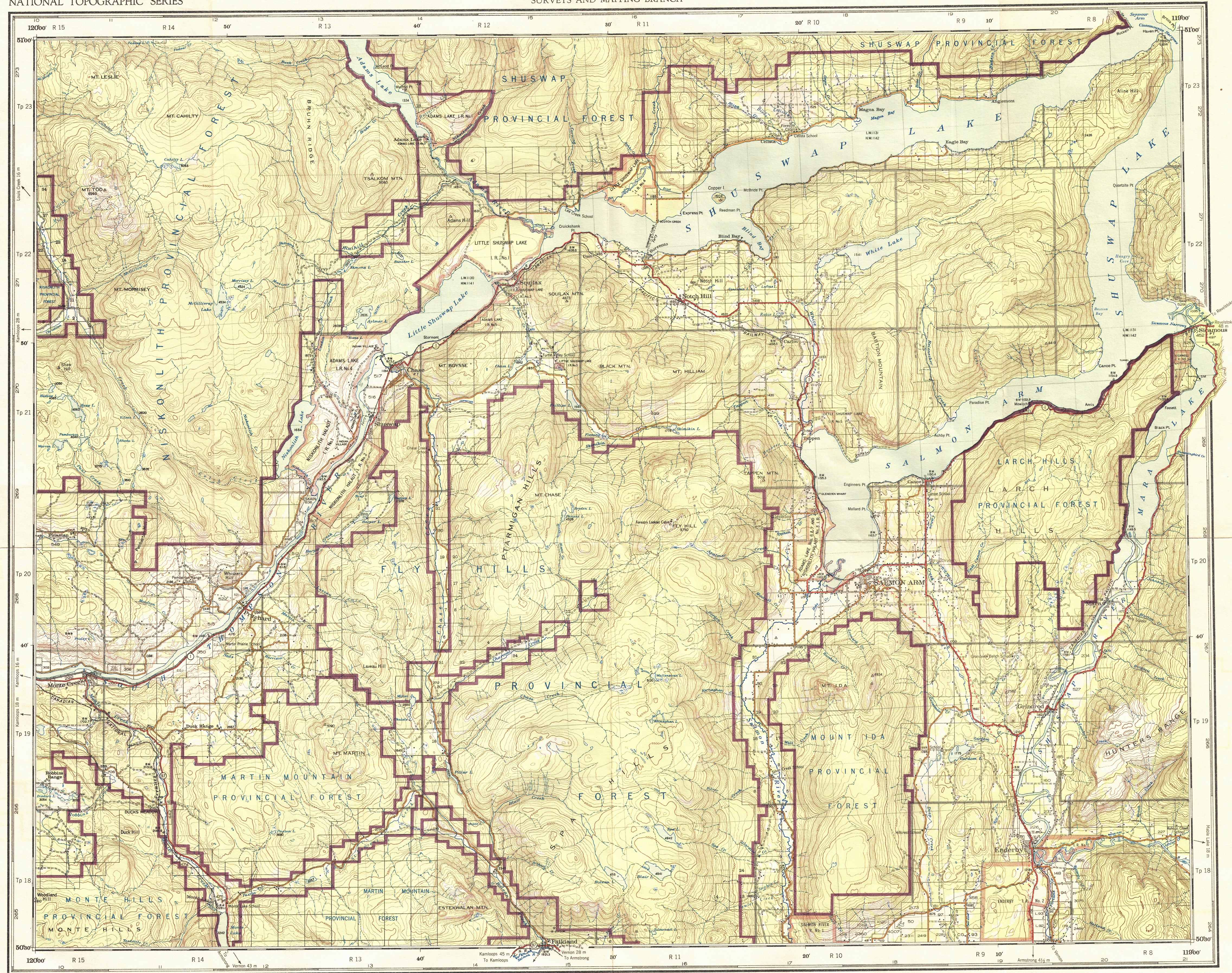
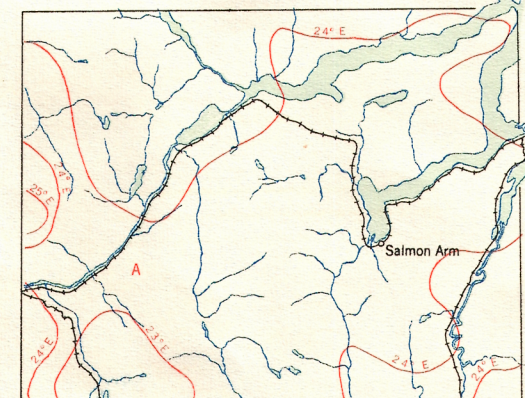


This document was produced  
by scanning the original publication.  
Ce document est le produit d'une  
numérisation par balayage  
de la publication originale.



Compiled, drawn and printed at the office of the Surveyor General, Ottawa, 1934.  
Reprinted with corrections, 1940.  
Reprinted with corrections at the Surveys and Mapping Branch, Ottawa, 1955

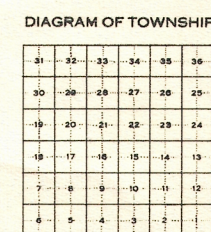
THE VARIATION OF THE COMPASS NEEDLE, JANUARY, 1952



The variation of the compass needle at any place along a red line is the variation given on that red line. At other places the variation is between those given on the neighbouring red lines. Thus at the place marked A, the variation is between 23° E and 24° E.  
The variation of the compass needle is decreasing 3 1/2 minutes annually.

Reference

Boundary provincial forest.	Indian reserve.	township
Railway double track.	Station	Water mill
single track.	Side or stop	Local crossing
electric.	Narrow gauge	Level crossing
Road class 1, trunk road.		
2, secondary thoroughfare		
3, local road well travelled.		
4, slightly travelled.		
Pack trail or path.		
Telephone or telegraph.		
Electric power line.		
Bridge stone or concrete.		
iron or wood.		
Swing bridge iron or wood.		
Dam stone, concrete or wood.		
Surveyed line.		



SHUSWAP  
BRITISH COLUMBIA

Scale 2 miles to 1 inch or 1:126,720

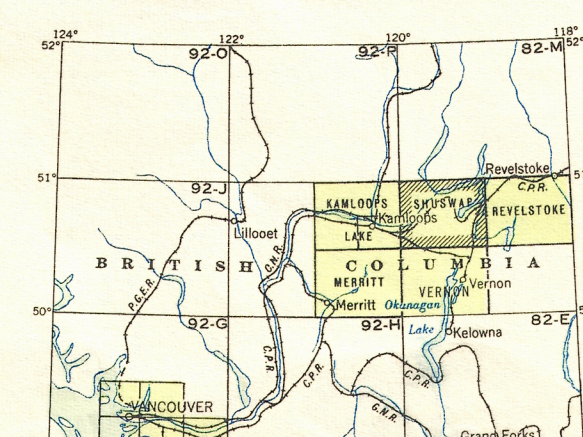
Miles 2 1 1/2 0 2 4 6 8 10 Miles

Contour interval 100 feet

NOTE: The grid squares provide a ready method of referring to or locating features. They are four miles to a side and subdivided into quarters by dotted lines. The east and west sides of the squares are not true north and south lines, but show a deflection to the west varying from 2° 15' on the east side of the map to 3° 00' on the west side. Any square is identified by the numbers along its outer border, for example, H6. The grid will be found in the southwest corner of square 11:272 and Enderby in the northeast corner of square 10:350.

Reference

Falls, rapids, sand, gravel or shingle, wharf	Falls or rapids	Gravel or shingle
Non-perennial stream	Quarry	Sand
Contours	City park	
Non-perennial contour	Gravel or sand pit	
Lot number.	Blacksmith shop-rural	
Building	Garage rural	
School	Mine	
Post office	Saw mill	
Telephone office	Grain or flour mill	
Church with spire or tower	Chow mill or factory	
Church without spire or tower	Camera station	
Triangulation station	Height in feet	
Geodetic bench mark		



NOTE: On the above index the sheets published are shown tinted green.