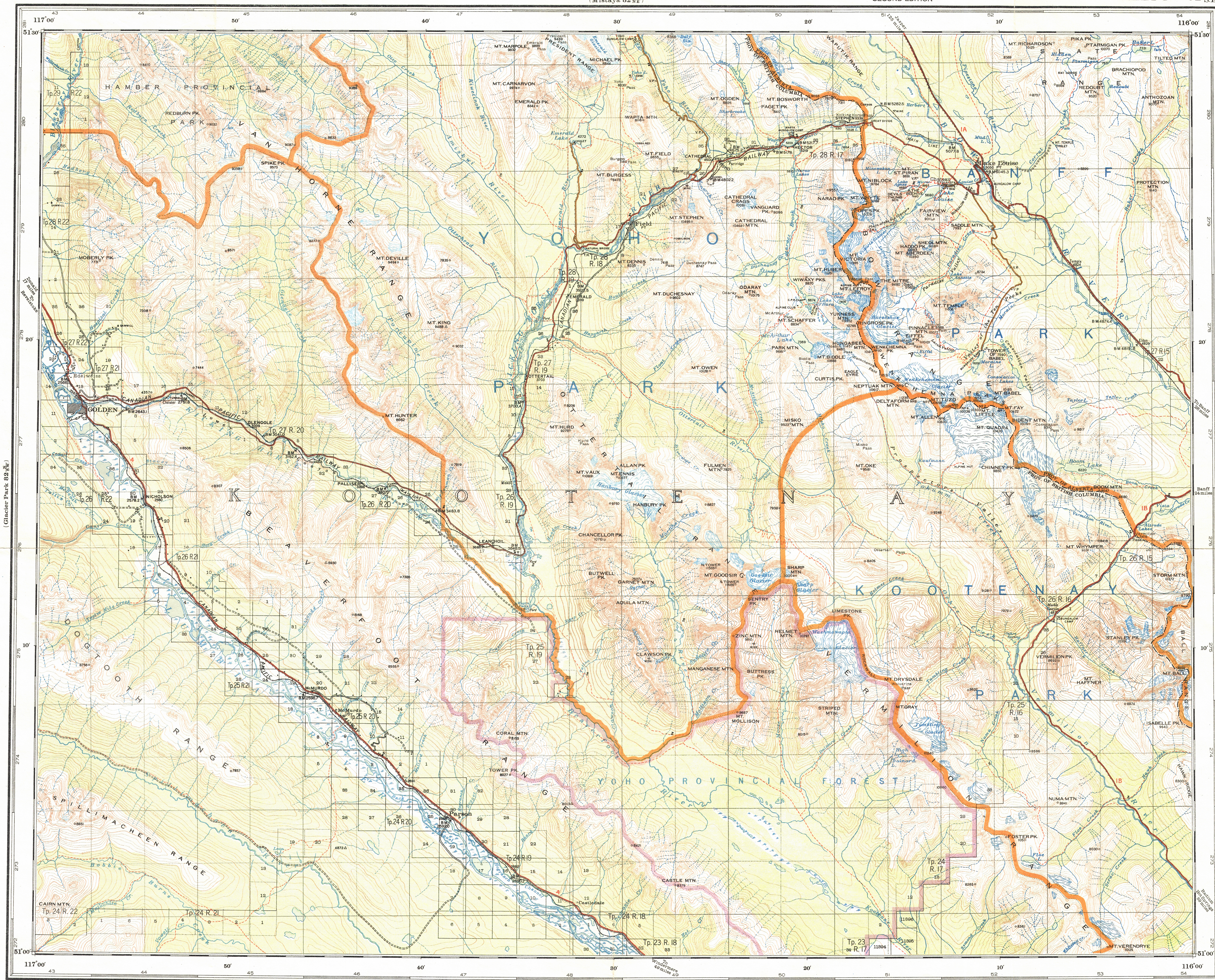
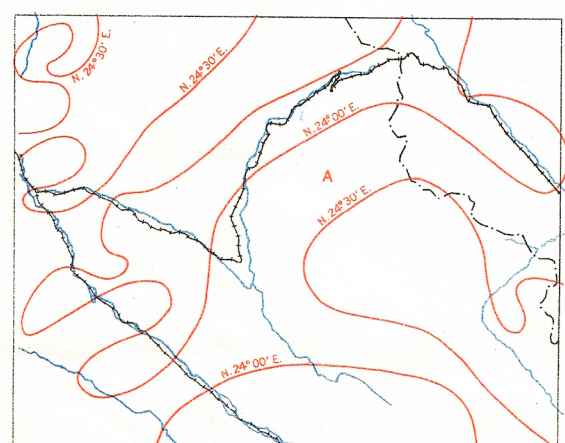


82 N/SE

This document was produced
by scanning the original publication.
Ce document est le produit d'une
numérisation par balayage
de la publication originale.



THE DECLINATION OF THE COMPASS NEEDLE,
JULY, 1950.



The declination of the compass needle at any place along a red line is the declination given on that red line. At other places the declination is between those given on the neighbouring red lines. Note at the place marked A, the declination is between 24° 05' and 24° 10'.

Reference

Railway: steam, single track
Boundary: provincial
- park
- provincial forest
Road: class 1, trunk road
- 2, secondary throughfare
- 3, local road well travelled
- 4, local road slightly travelled
Trail or path
Surveyed line
Telephone or telegraph
Marsh, bog or open muskeg
Falls or rapids with drop in feet
Woods
Sand or gravel
Glacier
Non-perennial stream

DIAGRAM OF TOWNSHIP

1	2	3	4	5	6	7	8	9	10
1	2	3	4	5	6	7	8	9	10
1	2	3	4	5	6	7	8	9	10
1	2	3	4	5	6	7	8	9	10

YOH0 BRITISH COLUMBIA AND ALBERTA

Scale 2 miles to 1 inch or 1:126,720

Miles 2 1 1/4 0 2 4 6 8 10 Miles

Contour interval 200 feet

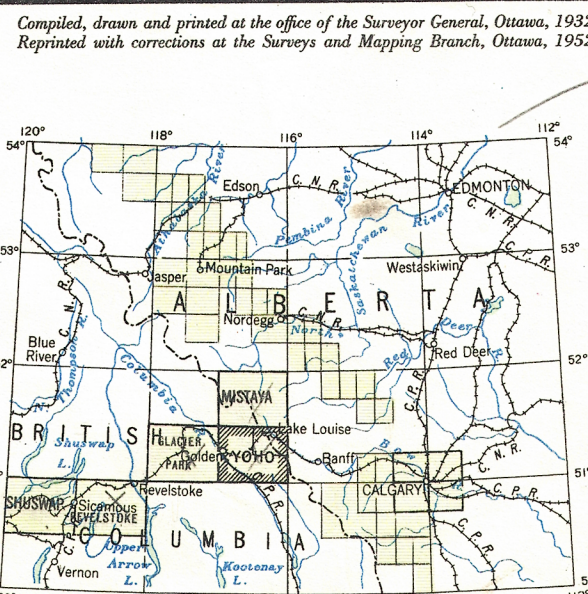
NOTE: The grid squares provide a ready method of referring to or locating features. They are four miles to a side and subdivided into quarters by dotted lines. The east and west sides of the squares are not all true north and south lines, but have a declination in the west varying from due north on the east side of the map to 7° 47' on the west side. Any square is identified by the numbers appearing along the outer border; for example, Mt. Duffie will be found in the southeast quarter of square 46-279 and Stanley Park in the northeast quarter of square 55-275.

Price 25 cents

Copies may be obtained from the Map Distribution Office,
Department of Mines and Technical Surveys, Ottawa.

Reference

Contours and cliffs
Depression contour
Permanent survey monument
Triangulation station
Geodetic bench mark
Camera station
Building
School
Post office
Telegraph office
Rest house
Tea house
View point
Camp ground
Warren's cabin or forestry cabin with telephone
Warren's cabin or forestry cabin without telephone
Height in feet



NOTE: On the above index the sheets published are shown lined green.

SHEET 82 N/SE