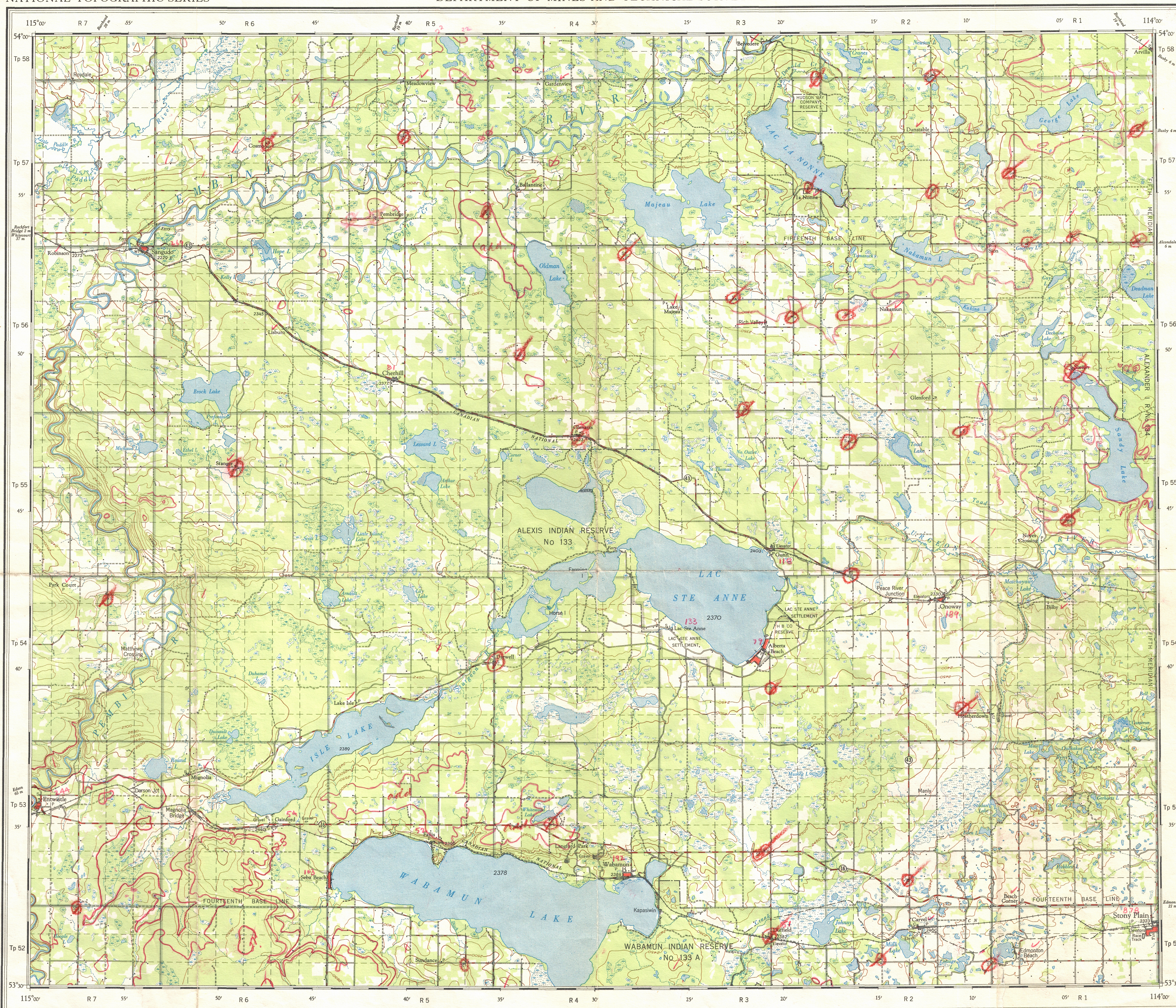


This document was produced
by scanning the original publication.
Ce document est le produit d'une
numérisation par balayage
de la publication originale.



Published by the Surveys and Mapping Branch, 1953.
Compiled by the Topographical Survey in 1949 from air
photographs taken in 1947 and 1948 by the Royal Canadian
Air Force.
Magnetic Declination 25°05' East at centre of sheet, 1950. The
declination of the compass needle is decreasing 5 minutes annually.
Lithographed and printed by the Army Survey Establishment
R.C.E., Department of National Defence.
Copies may be obtained from the Map Distribution Office,
Department of Mines and Technical Surveys, Ottawa.

REFERENCE

Road, hard surface, medium duty	2 lanes
Road, loose surface, graded and drained	3 lanes
Road, loose surface, graded and drained	Not less than 14 ft
Other roads	For contour
Route number	10
Railway, abandoned	Station
Bridge	Station
Boundary, Township surveyed	Station
Section line	Station
Boundary, Settlement	Station
Boundary, Indian Reserve	Station

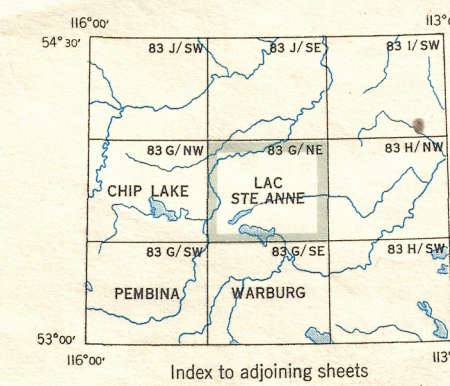
Scale: 1:126,720 or 1 inch = 2 miles

Miles 2 1/2 1 1/2 0 2 4 6 8 10 12 14 16 Miles

Kilometres 2 1 1/2 0 2 4 6 8 10 12 14 16 Kilometres

REFERENCE

Building	Church
School	Post Office
Cemetery	Water tank
Gravel pit	Height in feet above mean sea level
Stream, intermittent	2300
Lake or slough, non-permanent	
Sand or gravel bar	
Marsh or swamp	
Wharf	
Contours, interval 50 feet	
Contours, depression	
Wooded area	



LAC STE. ANNE
West of 5th Meridian, ALBERTA

SHEET 83 G/NE
FIRST EDITION