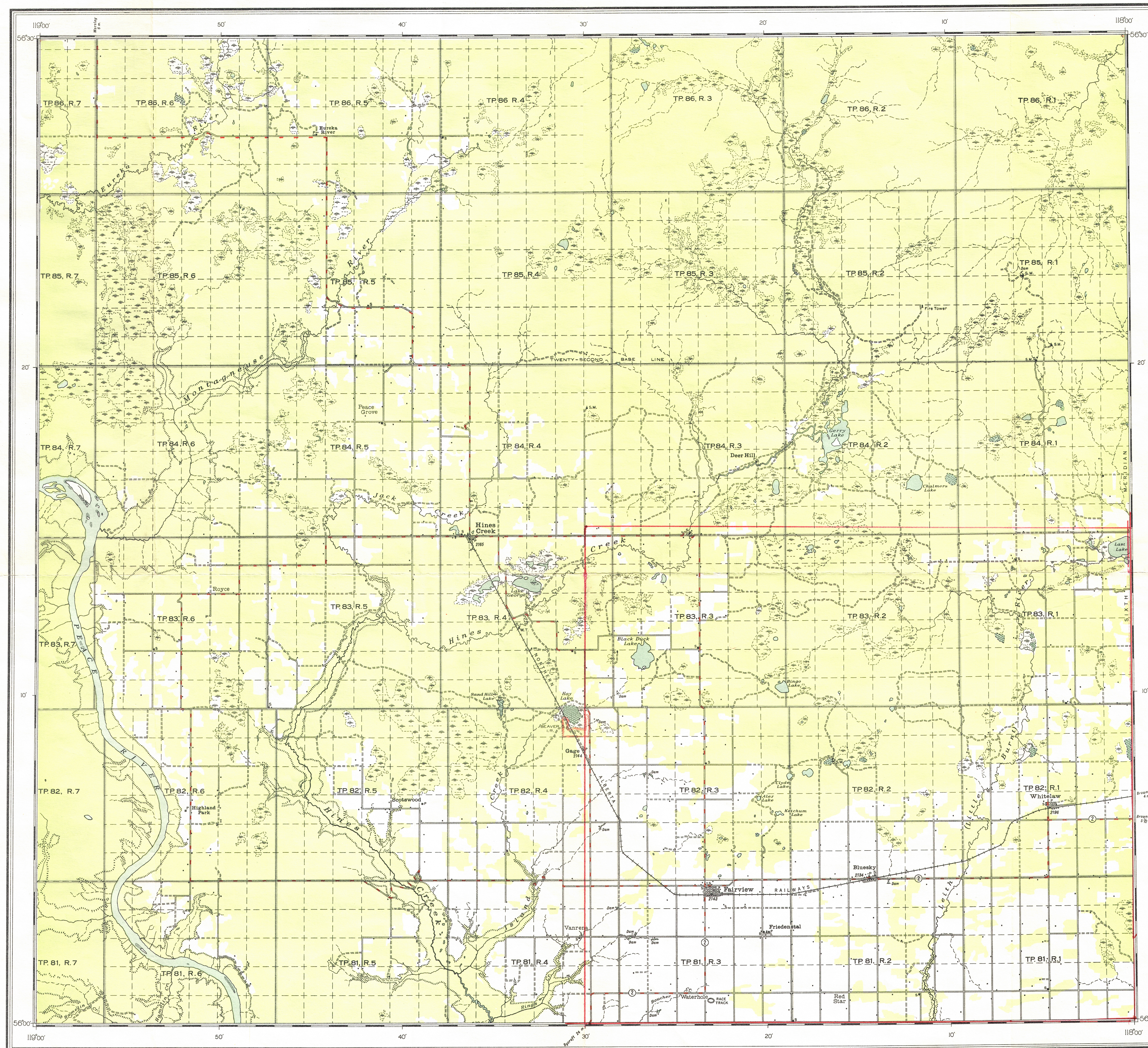


84 D/SE



Published 1950.  
Compilation by the Topographical Survey from air photographs taken in 1945 by the Royal Canadian Air Force.  
Lithographed and printed by the Army Survey Establishment, R.C.E., Department of National Defence.  
Approximate magnetic declination, 27°45' East.

REFERENCE	
Road, loose surface, graded and drained	—
Other roads	—
Railway	—
Building	—
Church	—
School	—
Post Office	—
Sawmill	—
Water tank	—
Fire tower	—

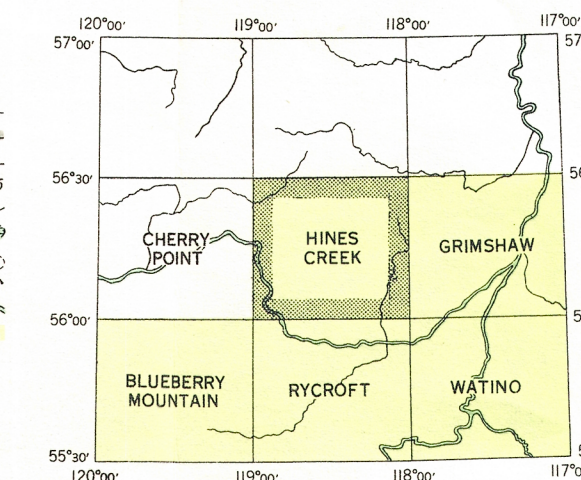
# HINES CREEK

WEST OF SIXTH MERIDIAN  
ALBERTA

Scale: One Inch to Two Miles = 1/126,720



REFERENCE	
Indian Reserve boundary	—
Township boundary	—
Section line	—
Height in feet above mean sea-level	—
Stream, intermittent	—
Lake non-permanent	—
Marsh or swamp	—
Edge of valley	—
Sand or gravel	—
Wooded area	—



This document was produced by scanning the original publication.  
Ce document est le produit d'une numérisation par balayage de la publication originale.