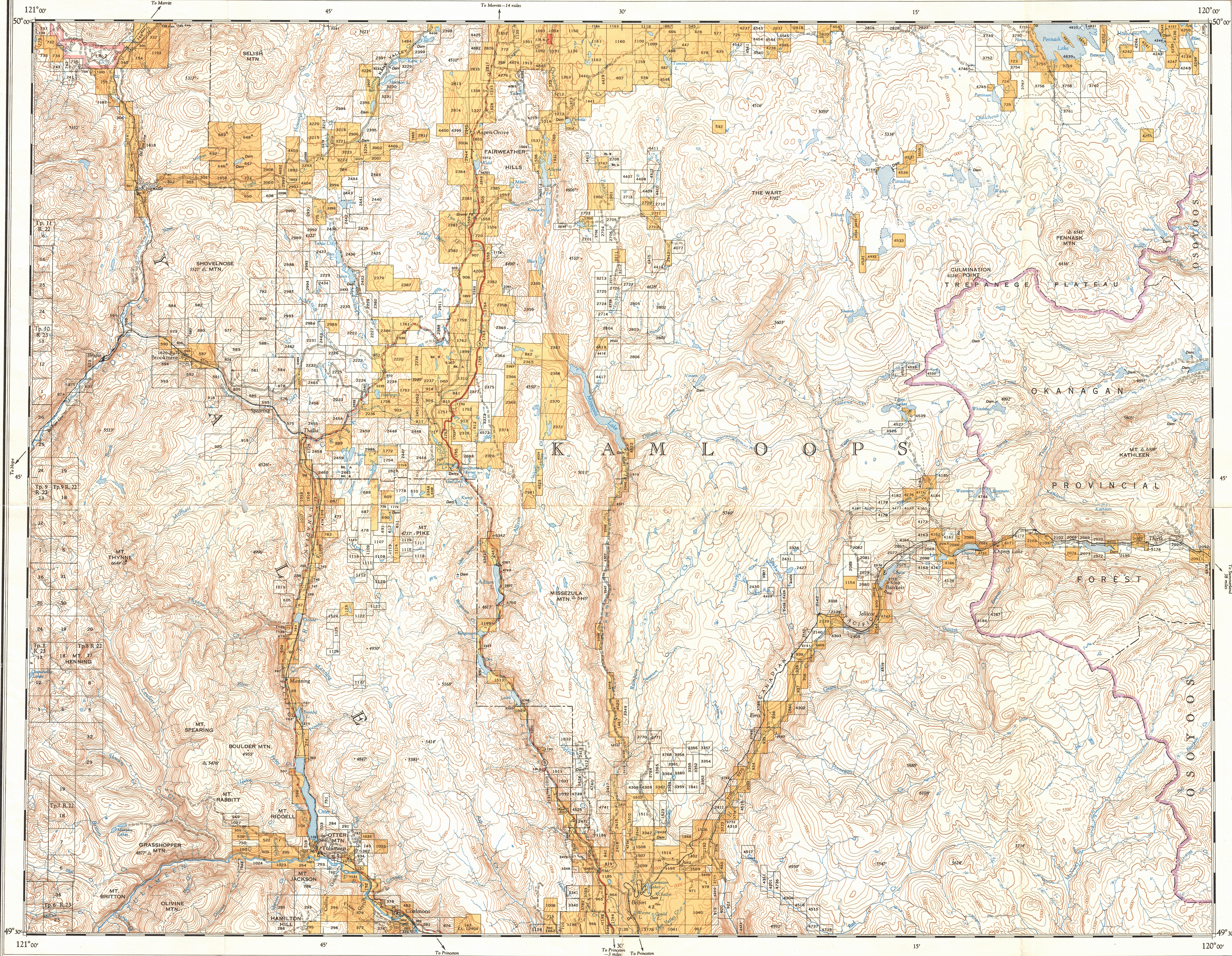


Ce document est le produit d'une numérisation par balayage de la publication originale.

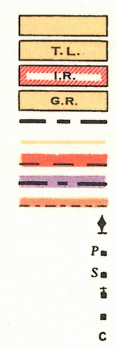
This document was produced by scanning the original publication.



Produced by the Survey and Mapping Branch, Department of Lands and Forests, British Columbia, 1953. Air photos by the B.C. Government 1947 to 1953.

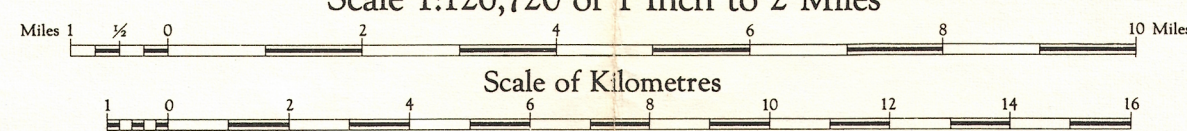
- ADMINISTRATION
DIVISIONS, DISTRICTS, AND OFFICES COVERING MAP AREA
- MINING DIVISIONS AND OFFICES
Nicola—Gold Commissioner, Kamloops
Nearest Mining Recorder, Merritt
Similkameen—Gold Commissioner, Princeton
Osoyoos—Gold Commissioner—Penticton
Nearest Sub-Recorder—Keremeos
- LAND RECORDING DISTRICTS AND OFFICES
Similkameen—Penticton
Kamloops—Kamloops
- GOVERNMENT AGENT
Merritt, Princeton

- REFERENCE
- Lands alienated or covered by applications under the Land Act
Surveyed Timber Lease or License
Indian Reserve
Government Reserve
Land District Boundary
Forest Management Licence
Park Boundary
Provincial Forest Boundary
Municipality
Power Service Lookout
Post Office
School
Church
Building
Cemetery



TULAMEEN BRITISH COLUMBIA

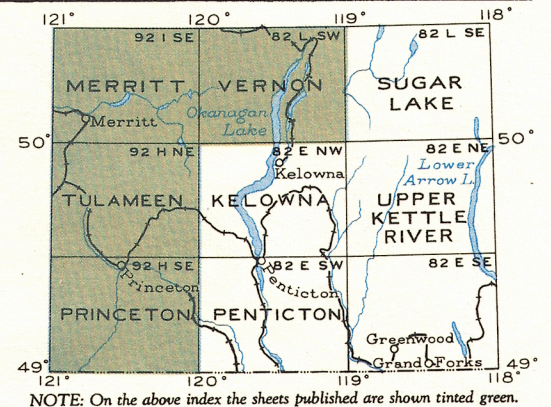
Scale 1:126,720 or 1 Inch to 2 Miles



Magnetic Declination 23° 30' East at centre of map, 1954.
Decreasing 4 minutes annually.
W. H. HUTCHINSON, CHIEF GEOGRAPHER

- REFERENCE
- Road, Hard Surface, All Weather
Road Surface, All Weather
Loose Surface, All Weather
Loose Surface, Less than 2 Lanes
Trail
Railway
Elevation in feet above mean sea-level
Intermittent Stream
Swamp or Marsh
Harbour or Coastal Station
Electric Power Line
Telephone Line
Contour (interval 100 feet)
Water Tank
Saw Mill

Universal Transverse Mercator Projection



TULAMEEN, B.C.
SHEET 92 H/NE
FIRST EDITION