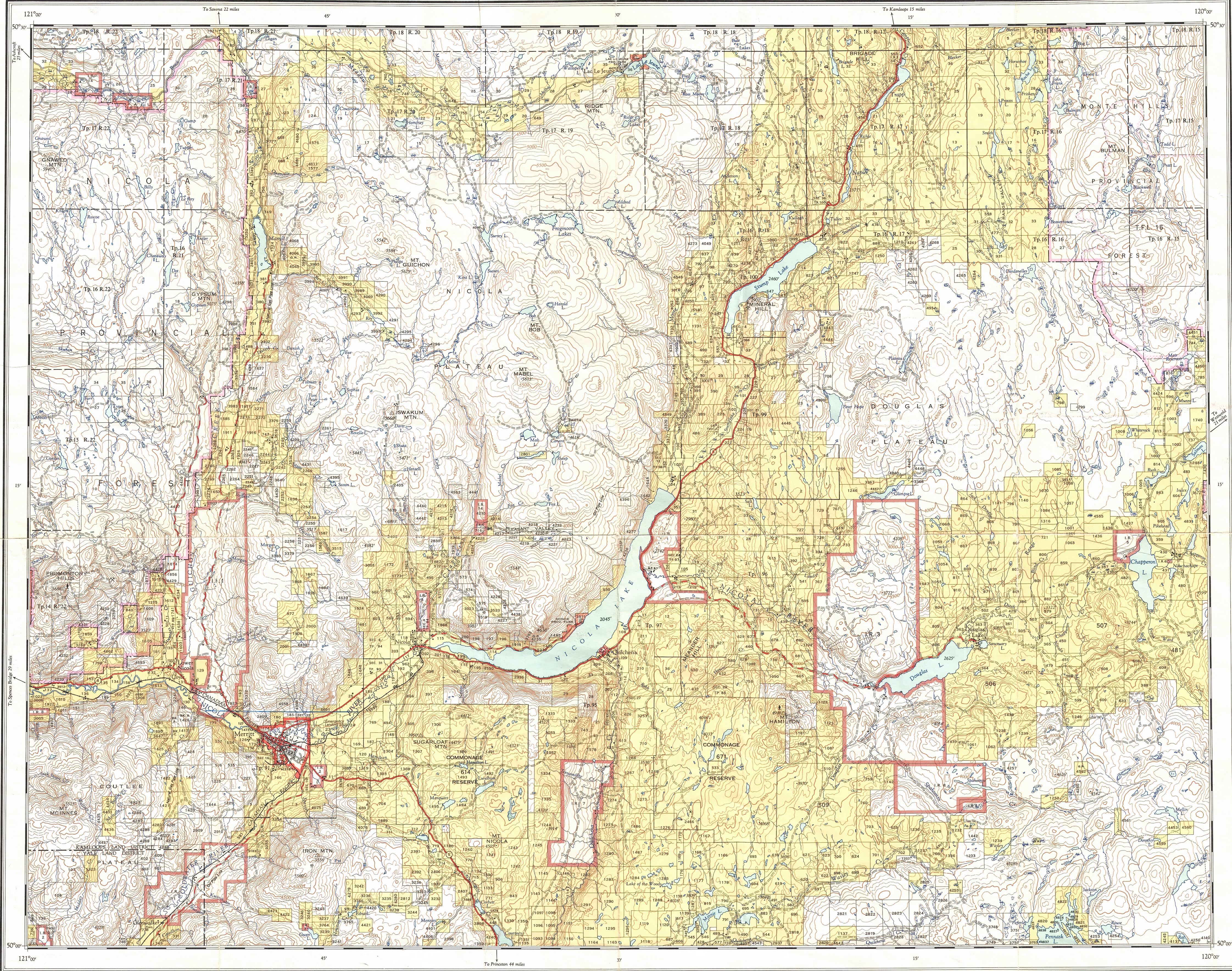


Ce document est le produit d'une numérisation par balayage de la publication originale.

This document was produced by scanning the original publication.



First Status Edition, compiled and produced by Geographic Division, Surveys and Mapping Branch, Dept. of Lands & Forests, Victoria, B.C., 1954-55.
Second Status Edition revised 1961.

RELIABILITY INFORMATION

Planimetry compiled from Prov. Govt. air survey interim mapping 1950-51, B.C. air photos 1948.
Contours from Prov. Govt. Topographic Surveys 1920-24, and Dept. of Mines & Technical Surveys, Ottawa 1928.
Culture revised from B.C. air photos 1960.

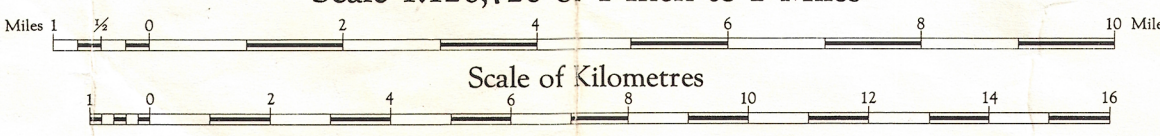
REFERENCE

Lands alienated or covered by applications under the Land Act
Surveyed Timber Lease, Licence, or Berth
Indian Reserve
Government Reserve
Land District Boundary
Tree Farm Licence
Park Boundary
Provincial Forest Boundary
Municipality
Forest Service Lookout
Post Office
School
Church
Building
Hospital
Cemetery
Campsite



MERRITT
BRITISH COLUMBIA

Scale 1:126,720 or 1 Inch to 2 Miles



Magnetic Declination approximately 23°34' East at centre of map, 1961.
Decreasing approximately 3'30" annually.

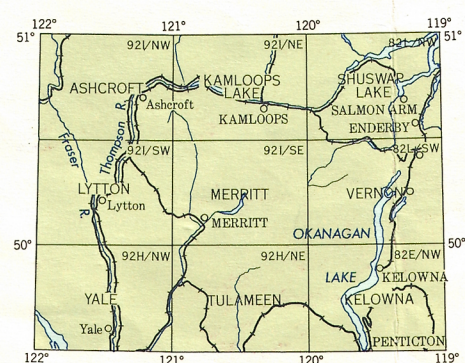
H. W. YOUNG, CHIEF GEOGRAPHER

Copies of this map may be obtained from
Geographic Div., Surveys and Mapping Branch,
Department of Lands & Forests, Victoria, B.C.

REFERENCE

Road, Hard Surface, All Weather
Loose Surface, All Weather
Loose Surface, Less than 2 Lanes
Trail
Railway
Telephone Line
Electric Power Line
Horizontal Control Station
Contours (Interval 100 feet)
Elevation in feet above mean sea-level
Intermittent Stream
Swamp or Marsh
Dam
Water Tank
Saw Mill
Mile Post
Mine

Universal Transverse Mercator Projection



Note—On the above index the sheets published are shown tinted green.
Mineral Claims are not shown on this sheet.

MERRITT, B.C.
SHEET 92 1/5E
SECOND STATUS EDITION

DEC - 4 1961