

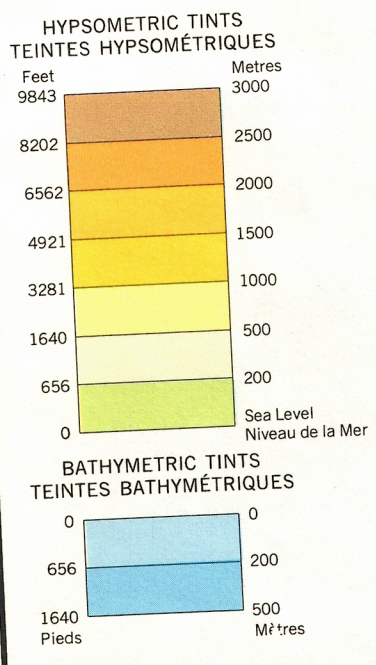
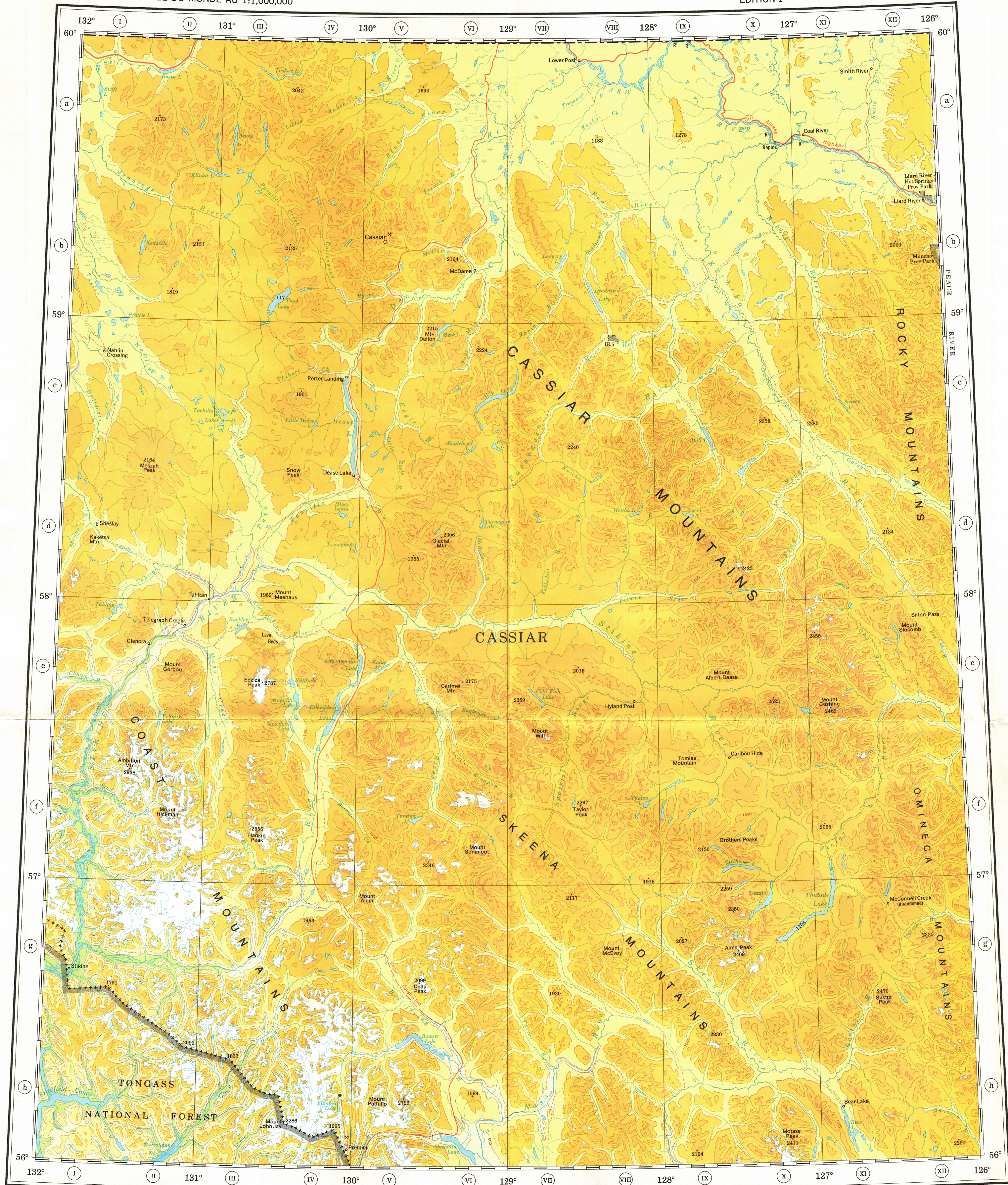
Ce document est le produit d'une numérisation par balayage de la publication originale.
This document was produced by scanning the original publication.

INTERNATIONAL MAP OF THE WORLD 1:1,000,000
CARTE INTERNATIONALE DU MONDE AU 1:1,000,000

DEASE LAKE

EDITION 1

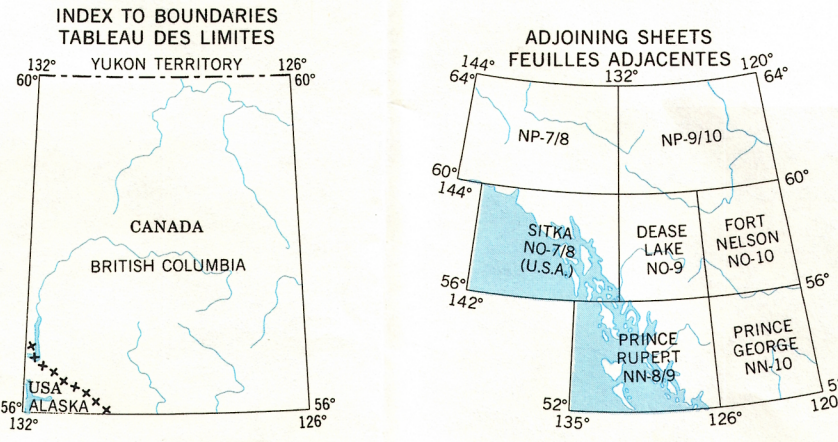
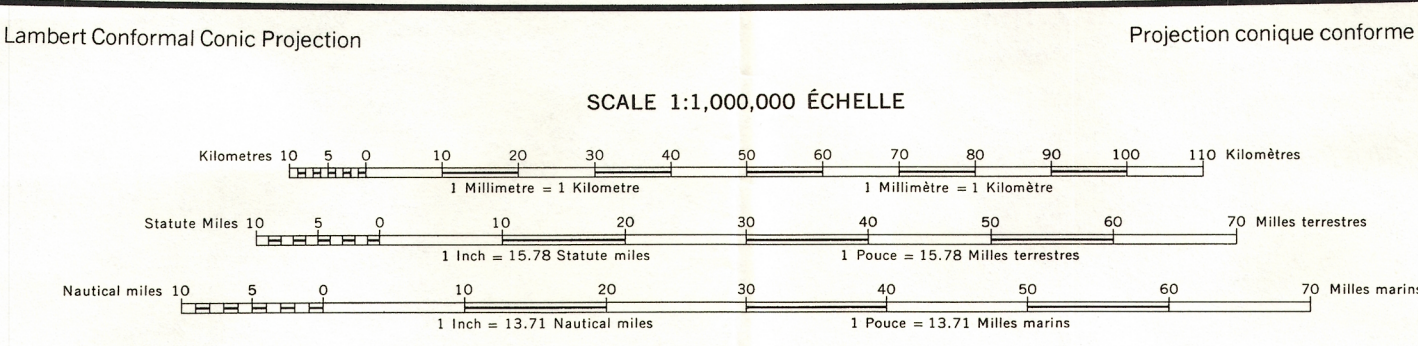
NO-9



Compiled in 1969, by the Survey and Mapping Branch,
Department of Energy, Mines and Resources, Ottawa, Canada.
Imprimé en 1971.

REFERENCE	LÉGENDE
Main highway	Route principale
Secondary road	Route secondaire
Other roads	Autres routes
Trail or track	Sentier ou piste
Boundary, international	Limite internationale
Boundary, provincial or state	Limite de province ou d'état
Boundary, county or district	Limite de comté ou de district
Boundary, park or reserve	Limite de parc ou de réserve

Copies may be obtained from the Map Distribution Office,
Department of Energy, Mines and Resources, Ottawa.



Department of Energy, Mines and Resources, Canada
Topographic maps 1:50,000 and 1:250,000.
Department of National Defence, Army Survey Establishment, Canada
Topographic maps 1:50,000 and 1:250,000.
Department of the Interior, Geological Survey, U.S.A.
Topographic maps 1:50,000 and 1:250,000.

REFERENCE	LÉGENDE
Town, population 500-5000	Ville, 500-5000 habitants
Town, population under 500	Ville, moins de 500 habitants
Mine	Mine
Elevation (in metres)	Altitude (en mètres)
Icefield, glacier	Champ de glace, glacier
Bathymetric lines (in metres)	Courbes bathymétriques (en mètres)
Contours (in metres)	Courbes de niveau (en mètres)
Marsh or swamp	Marais ou marécage

Ces cartes sont en vente au Bureau de distribution des cartes,
ministère de l'Énergie, des Mines et des Ressources, Ottawa.

DEASE LAKE NO-9

DEASE LAKE
NO-9