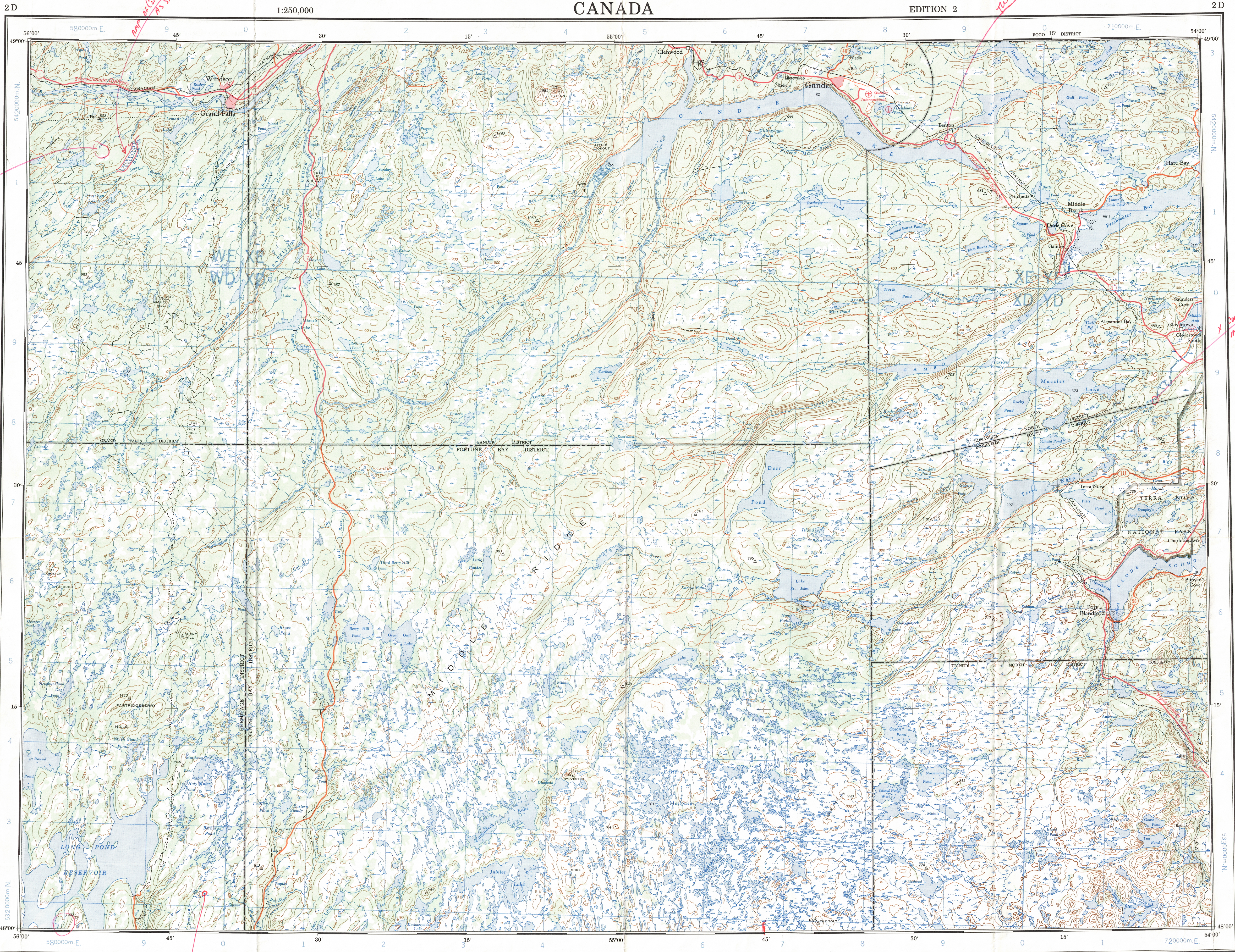


Ce document est le produit d'une numérisation par balayage de la publication originale.



Refer to
this map as:
EDITION 2
MCE
SERIES A 501

CONVERSION SCALE FOR ELEVATIONS
Feet
0 100 200 300 400 500 600 700 800 900 1000
Metres
0 100 200 300 400 500 600 700 800 900 1000

GRID ZONE DESIGNATION	100,000 M. SQUARE IDENTIFICATION			
	WE	XD	YE	4
21U	6	7		

TO GIVE A REFERENCE TO NEAREST 1000 METRES
EXAMPLE: RADIO TOWER
SQUARE: Road letters of 100,000 m. square XE
EASTING: Road number on grid line immediately to left of point Estimate tenths of a square from this line eastward to point. 8
NORTHING: Road number on grid line immediately below point Estimate tenths of a square from this line northward to point. 3
MILITARY GRID REFERENCE (to nearest 1,000 metres) XE8327
If reporting beyond 18° in any direction, prefix Grid Zone Designation as: 21UXE8327

TEN THOUSAND METRE
UNIVERSAL TRANSVERSE MERCATOR GRID
ZONE 21

Roads:
hard surface, all weather..... dual highway..... more than 2 lanes
hard surface, all weather..... 2 lanes..... less than 2 lanes
loose or stabilized surface, all weather..... 2 lanes or more..... less than 2 lanes
loose surface, dry weather.....
cart track.....
trail or portage.....

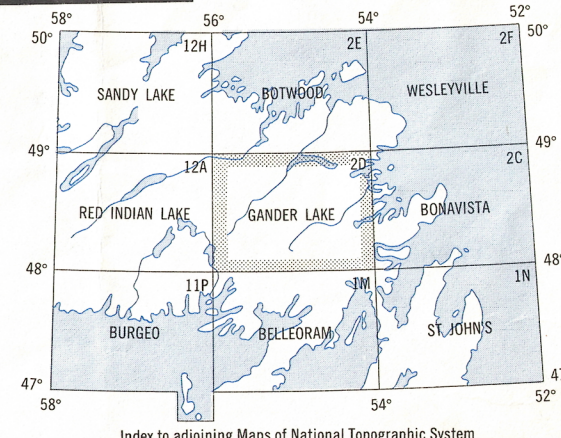
Miles 5 0 10 15 20 30
Kilometres 5 0 10 15 20 30

CONTOUR INTERVAL 100 FEET
Elevations in Feet above Mean Sea Level
North American Datum 1927
Projection Transverse Mercator
Copies may be obtained from the Map Distribution Office,
Department of Energy, Mines and Resources, Ottawa.

Routes:
pavée, toute saison..... 2 chaussées séparées..... plus de 2 voies
pavée, toute saison..... 2 voies..... moins de 2 voies
gravier aggloméré, toute saison..... 2 voies ou plus..... moins de 2 voies
de gravier période sèche.....
de terre.....
sentier ou portage.....

POUR UNE LISTE COMPLÈTE DES SIGNES, VOIR AU VERSO

TOPOGRAPHICAL SURVEY DIRECTORATE
SERVICE TOPOGRAPHIQUE
DATE 15-11-74
Q.C. APPROVES RELEASE
C.O. APPROUVE



GANDER LAKE
EDITION 2