

This document was produced
by scanning the original publication.
Ce document est le produit d'une
numérisation par balayage
de la publication originale.

13 G

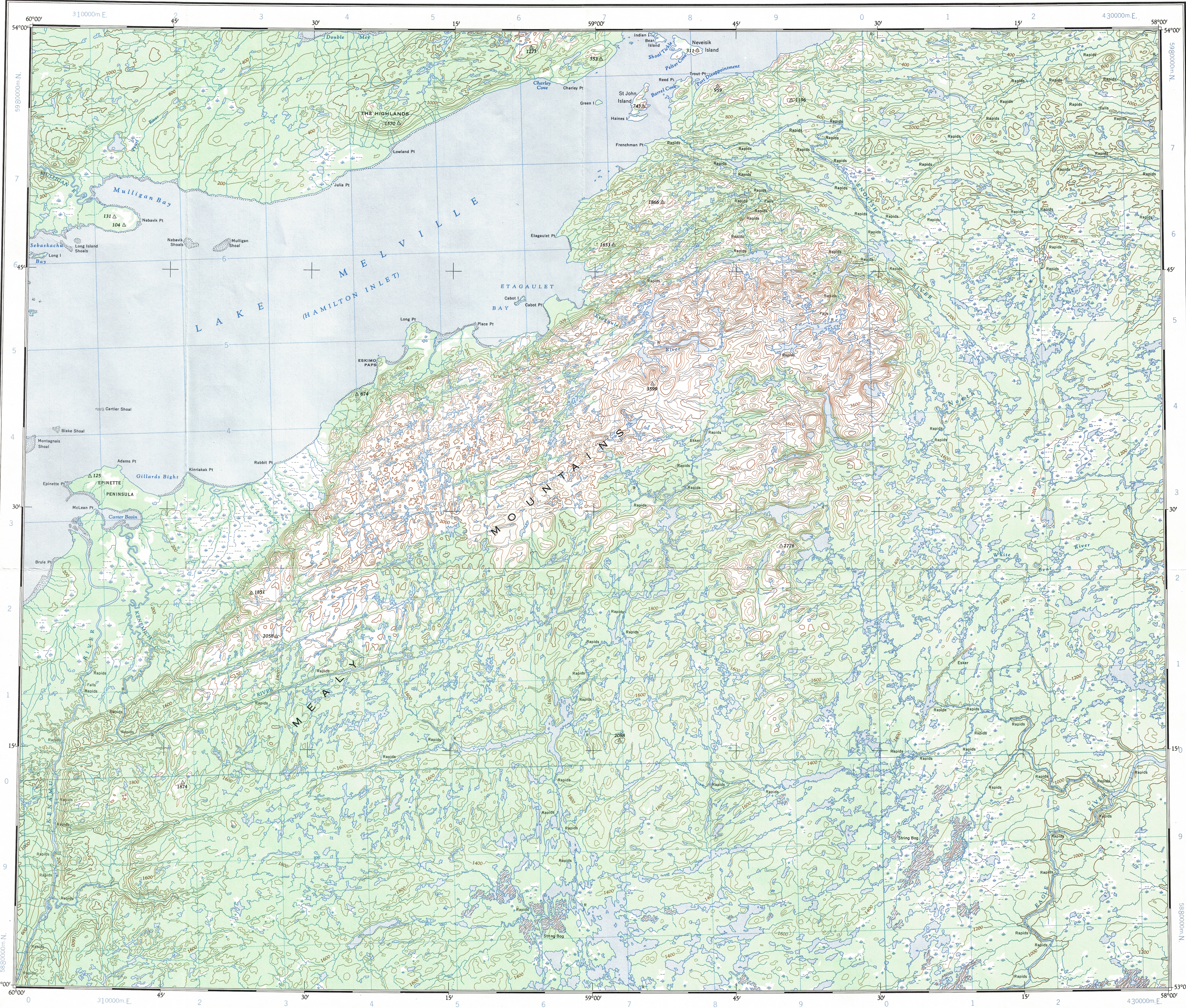
1:250,000

CANADA

EDITION 1

13 G

Refer to
this map as:
13 G
EDITION 1 ASE
SERIES A 501

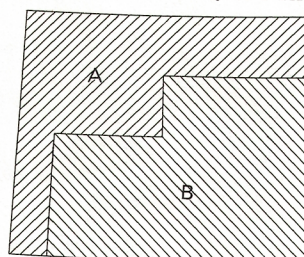


TOPOGRAPHICAL SURVEY DIRECTORATE
SERVICE TOPOGRAPHIQUE
DATE 27.05.86
C.C. APPROVES RELEASE
C.Q. APPROUVE

GRID ZONE DESIGNATION		100,000 M. SQUARE IDENTIFICATION	
21 U	UK	VK	59
	UJ	VJ	
TO GIVE A REFERENCE TO NEAREST 1000 METRES			
EXAMPLE: STREAM JUNCTION			
SQUARE: Road letters of 100,000 m. square UK			
EASTING: Road number on grid line immediately to left of point			9
Estimate tenths of a square from this line eastward to point			98
NORTHING: Road number on grid line immediately below point			2
Estimate tenths of a square from this line northward to point			7
MILITARY GRID REFERENCE (to nearest 1,000 metres)			UK 9827
If reporting beyond 18° in any direction, prefix Grid Zone Designation as: 21UUK 9827			

TEN THOUSAND METRE
UNIVERSAL TRANSVERSE MERCATOR GRID
ZONE 21

RELIABILITY DIAGRAM - CROQUIS D'EXACTITUDE



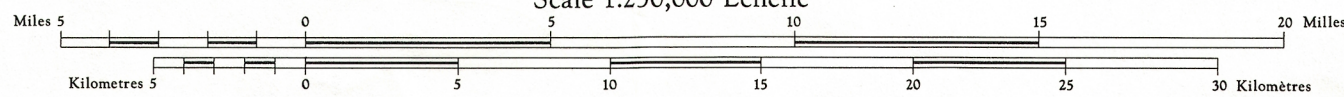
A - Large scale topographic maps, photogrammetric 1958-1961.
B - Stereo-compiled from 1951 aerial photographs.
A - Cartes topographiques à grande échelle (photogrammétriques: 1958-1961)
B - Établies par stéréorestitution d'après des photos aériennes prises en 1951.

Compiled 1961, by the SURVEYS AND MAPPING BRANCH,
DEPARTMENT OF MINES AND TECHNICAL SURVEYS.
Horizontal and vertical control 1959. Printed 1964.
Magnetic declination 1965 varies from 33° 00' westerly at
centre of west edge to 33° 00' westerly at centre of east
edge. Mean annual change: 3.9' easterly.

Some names on this map are not yet official.
Corrections or additions are invited by the
Surveys and Mapping Branch.

LAKE MELVILLE
NEWFOUNDLAND

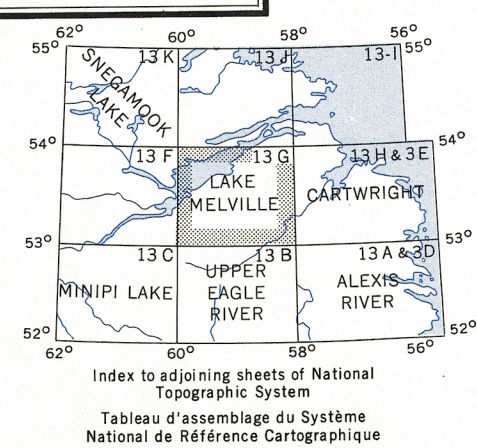
Scale 1:250,000 Échelle



Transverse Mercator Projection
North American Datum 1927
Contour Interval 200 feet
Elevations in feet above Mean Sea Level
Copies may be obtained from the Map Distribution Office,
Department of Mines and Technical Surveys, Ottawa.

Projection Transverse de Mercator
Niveau de référence nord-américain, 1927
Équidistance des courbes: 200 pieds
Élévations en pieds au-dessus du niveau moyen de la mer
Ces cartes sont en vente au Bureau de distribution des cartes,
ministère des Mines et des Relevés techniques, Ottawa.

Rédigée en 1961, par la DIRECTION DES LEVÉS ET DE LA
CARTOGRAPHIE, MINISTÈRE DES MINES ET DES RELEVÉS
TECHNIQUES. Canavass planimétrique et altimétrique établie en
1959. Imprimée en 1964.
La déclinaison magnétique pour 1965 varie de 33° 00' Ouest au
centre de la limite Ouest à 33° 00' Ouest au centre de la limite
Est. Variation moyenne annuelle: 3.9' Est.
Stream Cours d'eau
Intermittent or dry Intermittent ou à sec
Indefinite Imprécis
Rapids or falls Rapides; chutes
Marsh or swamp Marais ou marécage
Intermittent lake Lac intermittent
Depression contours Courbes de cuvette
Spot elevation, in feet Repère de nivellement en pieds 2550



Index to adjoining sheets of National
Topographic System
Tableau d'assemblage du Système
National de Référence Cartographique

LAKE MELVILLE
13 G
EDITION 1
BEARINT