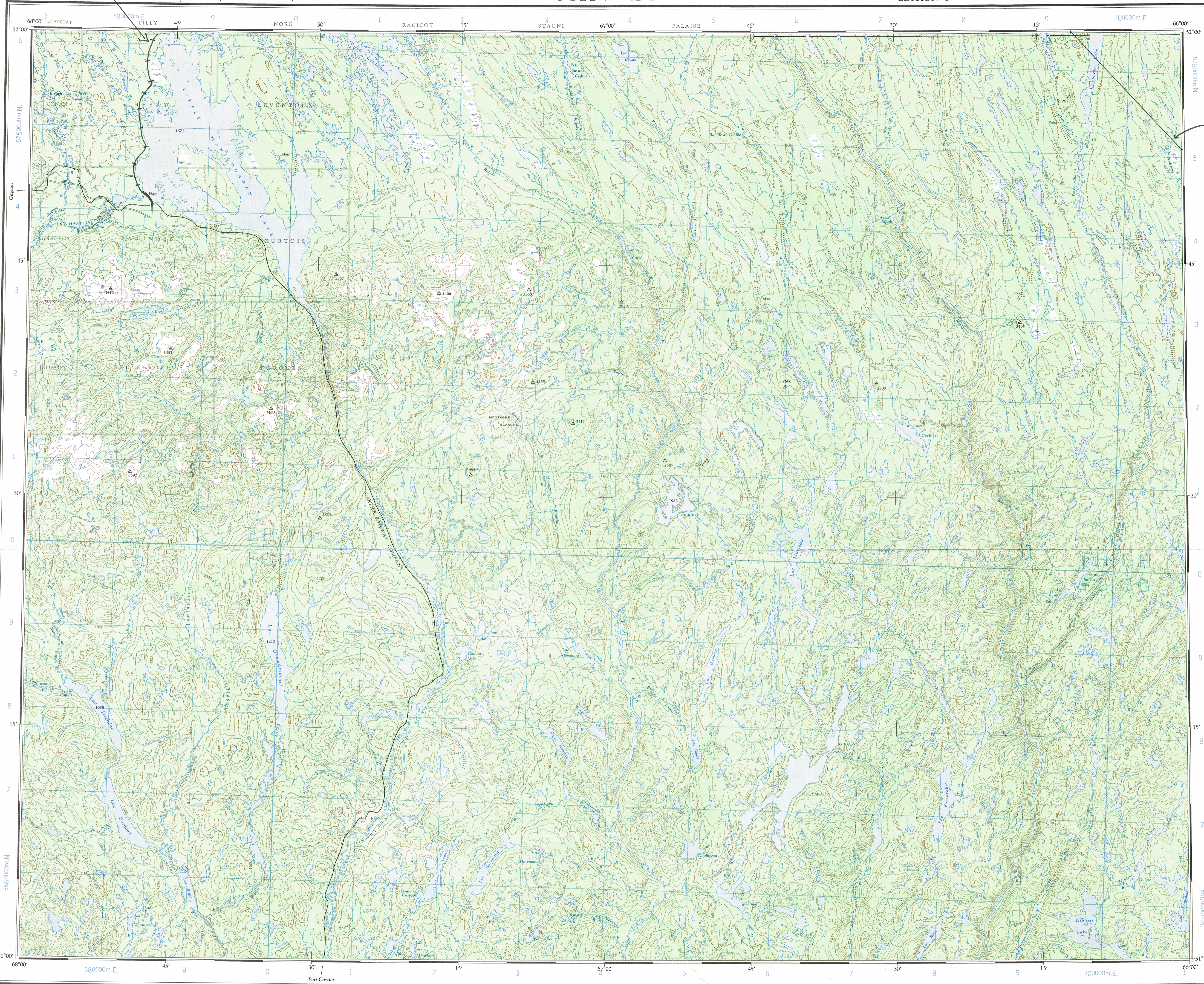


This document was produced  
by scanning the original publication.  
Ce document est le produit d'une  
numérisation par balayage  
de la publication originale.

22-O



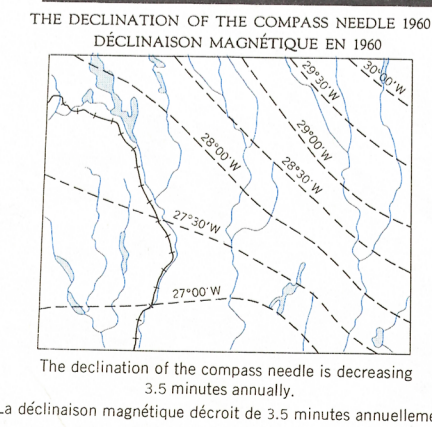
22-O

Refer to  
this map as:  
22-O  
EDITION 1 ASE  
SERIES A 501

NEW  
315 KV Transmission  
Line  
Refer to letter in  
Docket  
Jan 31/75

100,000 M. SQUARE IDENTIFICATION	
GRID ZONE DESIGNATION	19U
TO GIVE A REFERENCE TO NEAREST 1000 METRES	
EXAMPLE:	FALLS
SQUARE: Read letters of 100,000 m. square	FG
EASTING: Read number on grid line immediately to left of point	4
Estimate tenths of a square from this line eastward to point	4.5
NORTHING: Read number on grid line immediately below point	8
Estimate tenths of a square from this line northward to point	7
MILITARY GRID REFERENCE	19UFG4887
If reporting beyond 18° in any direction prefix Grid Zone Designation as: 19UFG4887	

TEN THOUSAND METRE  
UNIVERSAL TRANSVERSE MERCATOR GRID  
ZONE 19



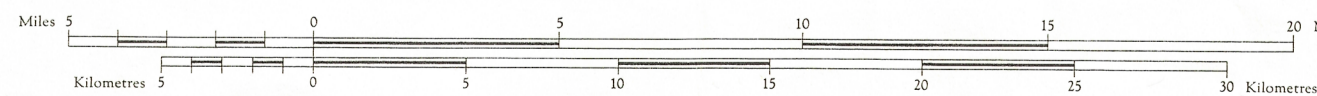
Compiled by the SURVEYS AND MAPPING BRANCH,  
DEPARTMENT OF MINES AND TECHNICAL SURVEYS,  
1960 from large scale maps. Printed 1962.  
Copies may be obtained from the Map Distribution  
Office, Department of Mines and Technical Surveys,  
Ottawa.

Road, all weather ..... Chemin, toute saison .....  
Wagon or winter road ..... Chemin de terre ou d'hiver .....  
Trail or portage ..... Sentier ou portage .....  
Town ..... Ville .....  
Village or settlement ..... Village ou hameau .....  
Post office ..... Bureau de poste .....  
Horizontal control point ..... Point géodésique .....  
Boundary monument ..... borne frontière .....

Transverse Mercator Projection  
North American Datum 1927  
Contour Interval 200 feet  
Elevations in feet above Mean Sea Level

LAC FOUQUET  
SAGUENAY COUNTY - COMTE DE SAGUENAY  
QUEBEC

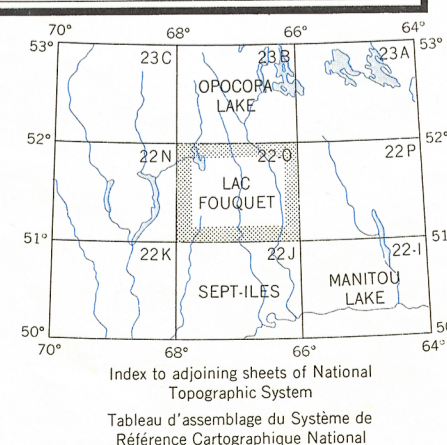
Scale 1:250,000 Echelle



Projection Transverse de Mercator  
Réseau géodésique nord-américain unifié 1927  
Equiréistance des courbes; 200 pieds  
Élévations en pieds au-dessus du niveau moyen de la mer

Compiled by the DIRECTION DES LEVÉS ET DE LA CARTOGRAPHIE,  
MINISTÈRE DES MINES ET DES RELEVÉS TECHNIQUES, en 1960,  
d'après cartes à large échelle. Imprimées en 1962.  
Ces cartes sont en vente au Bureau de distribution des  
cartes, ministère des Mines et des Relevés techniques,  
Ottawa.

Stream ..... Cours d'eau .....  
Intermittent or dry ..... Intermittent ou à sec .....  
Indefinite ..... Imprécis .....  
Rapids; falls ..... Rapides; chutes .....  
Marsh or swamp ..... Marais ou marécage .....  
Intermittent lake ..... Lac intermittent .....  
Depression contours ..... Courbes de cuvette .....  
Spot elevation, in feet ..... Repère de nivellement en pieds ..... 2500



LAC FOUQUET  
22-O  
EDITION 1