

This document was produced
by scanning the original publication.
Ce document est le produit d'une
numérisation par balayage
de la publication originale.

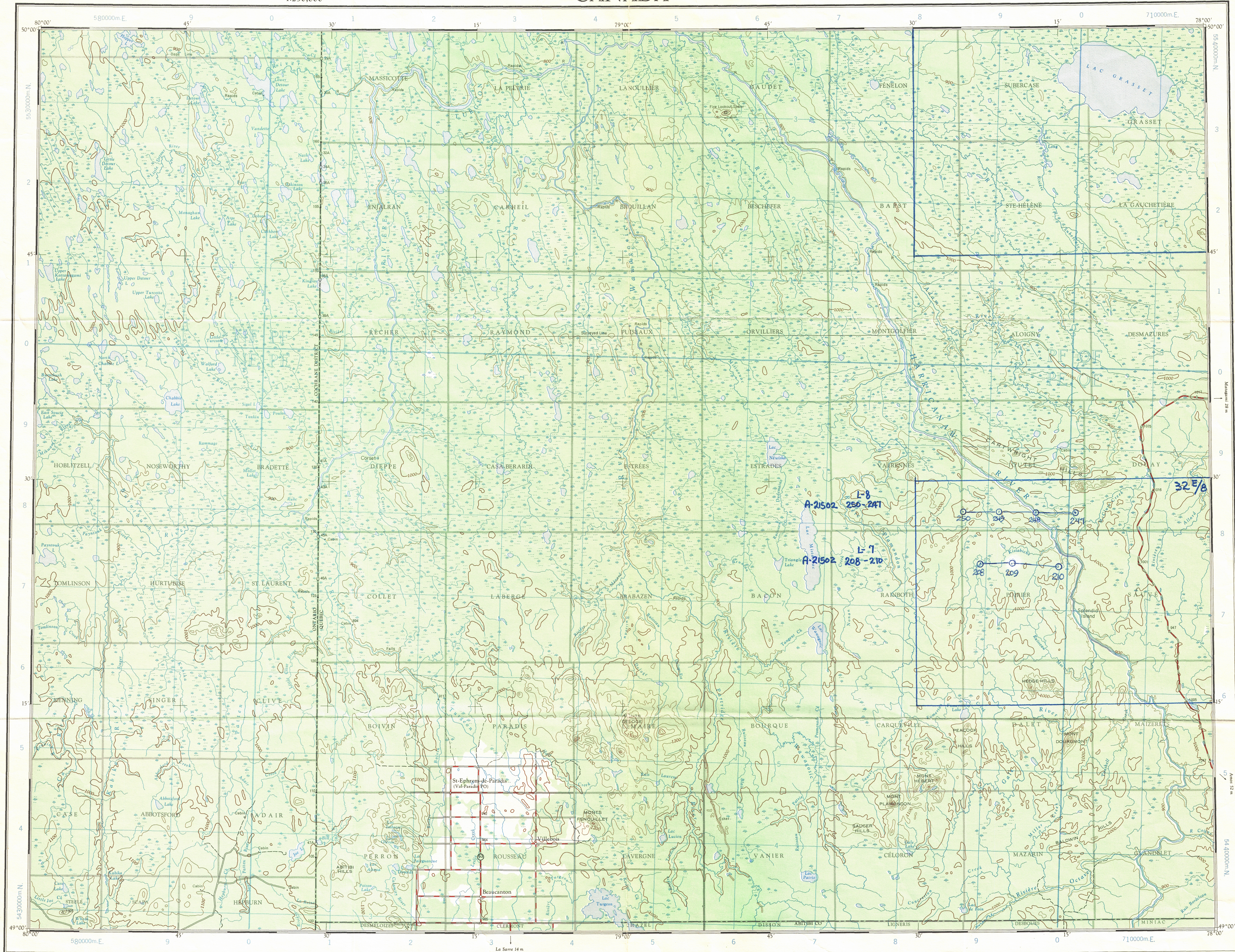
32 E

1:250,000

CANADA

EDITION 1

32 E



Refer to
this map as:
32 E
EDITION 1 ASE
SERIES A 501

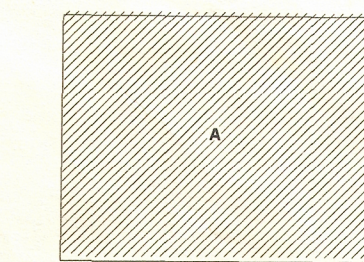
L-8
A-21502 250-247

L-7
A-21502 208-210

100,000 M. SQUARE IDENTIFICATION	
GRID ZONE DESIGNATION	N 17 U
TO GIVE A REFERENCE TO NEAREST 1000 METRES	
EXAMPLE: CABIN	
SQUARE: Read letters of 100,000 m. square	PE
EASTING: Read number on grid line immediately to left of point	1
Estimate tenths of a square from this line eastward to point	12
NORTHING: Read number on grid line immediately below point	6
Estimate tenths of a square from this line northward to point	66
MILITARY GRID REFERENCE (to nearest 1,000 metres)	PE 1266
If reporting beyond 18° in any direction prefix Grid Zone Designation as:	17 UPE 1266

TEN THOUSAND METRE
UNIVERSAL TRANSVERSE MERCATOR GRID
ZONE 17

RELIABILITY DIAGRAM - CROQUIS D'EXACTITUDE



A - Stereo compiled from 1952-53 aerial photographs.
A - Révisé par stéréorestitution d'après des photographies
aériennes prises en 1952-53.

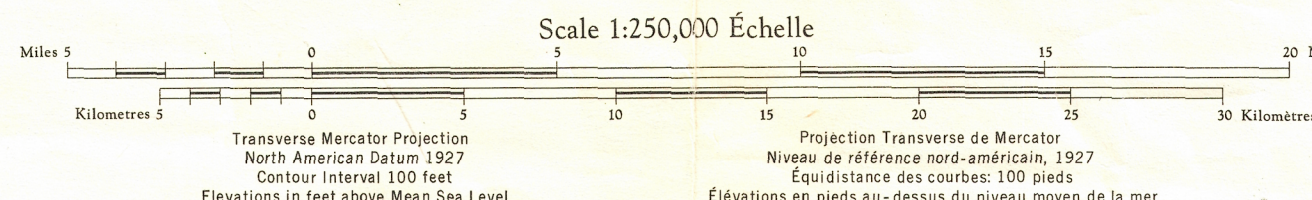
Compiled 1963 by the SURVEYS AND MAPPING BRANCH,
DEPARTMENT OF MINES AND TECHNICAL SURVEYS.
Field surveys 1956-57-62. Printed 1965.

Magnetic declination 1964 varies from 11°43' westerly at
centre of west edge to 13°55' westerly at centre of east
edge. Mean annual change: 2.9' westerly.

Some names on this map are not yet official.
Corrections or additions are invited by the Sur-
veys and Mapping Branch.

UPPER HARRICANAW RIVER

QUÉBEC - ONTARIO



Copies may be obtained from the Map Distribution Office,
Department of Mines and Technical Surveys, Ottawa.

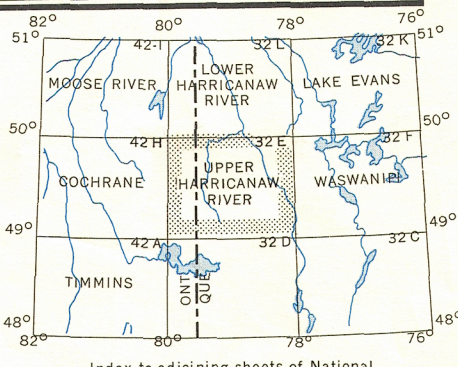
Ces cartes sont en vente au Bureau de distribution des cartes,
ministère des Mines et des Relevés techniques, Ottawa.

Certain names inscribed on this map are not
yet official. La Direction des levés et
de la cartographie saurait gré au public de lui
signaler corrections et additions.

Rédigée en 1963 par la DIRECTION DES LEVÉS ET DE LA
CARTOGRAPHIE, MINISTÈRE DES MINES ET DES RELEVÉS
TECHNIQUES. Levés sur le terrain en 1956-57-62. Imprimée en
1965.

La déclinaison magnétique pour 1964 varie de 11°43' Ouest au
centre de la limite Ouest à 13°55' Ouest au centre de la limite
Est. Variation moyenne annuelle: 2.9' Est.

- | | |
|--|---|
| Town or Settlement.....Ville..... | Stream.....Cours d'eau ou à sec..... |
| Village or hamlet.....Village ou hameau..... | Intermittent lake.....Lac intermittent..... |
| Post Office.....Bureau de poste..... | Rapids, falls.....Rapides, chute..... |
| Church.....Église..... | Marsh or swamp.....Marais ou marécage..... |
| School.....École..... | Lighthouse.....Phare..... |
| Boundary monument.....Borne frontière..... | Airport.....Aéroport..... |
| Horizontal control point.....Point géodésique..... | Seaplane base.....Base d'hydravions..... |



Index to adjoining sheets of National
Topographic System
Tableau d'assemblage du Système
National de Référence Cartographique

UPPER HARRICANAW RIVER
32 E
EDITION 1