

This document was produced
by scanning the original publication.
Ce document est le produit d'une
numérisation par balayage
de la publication originale.

42 P

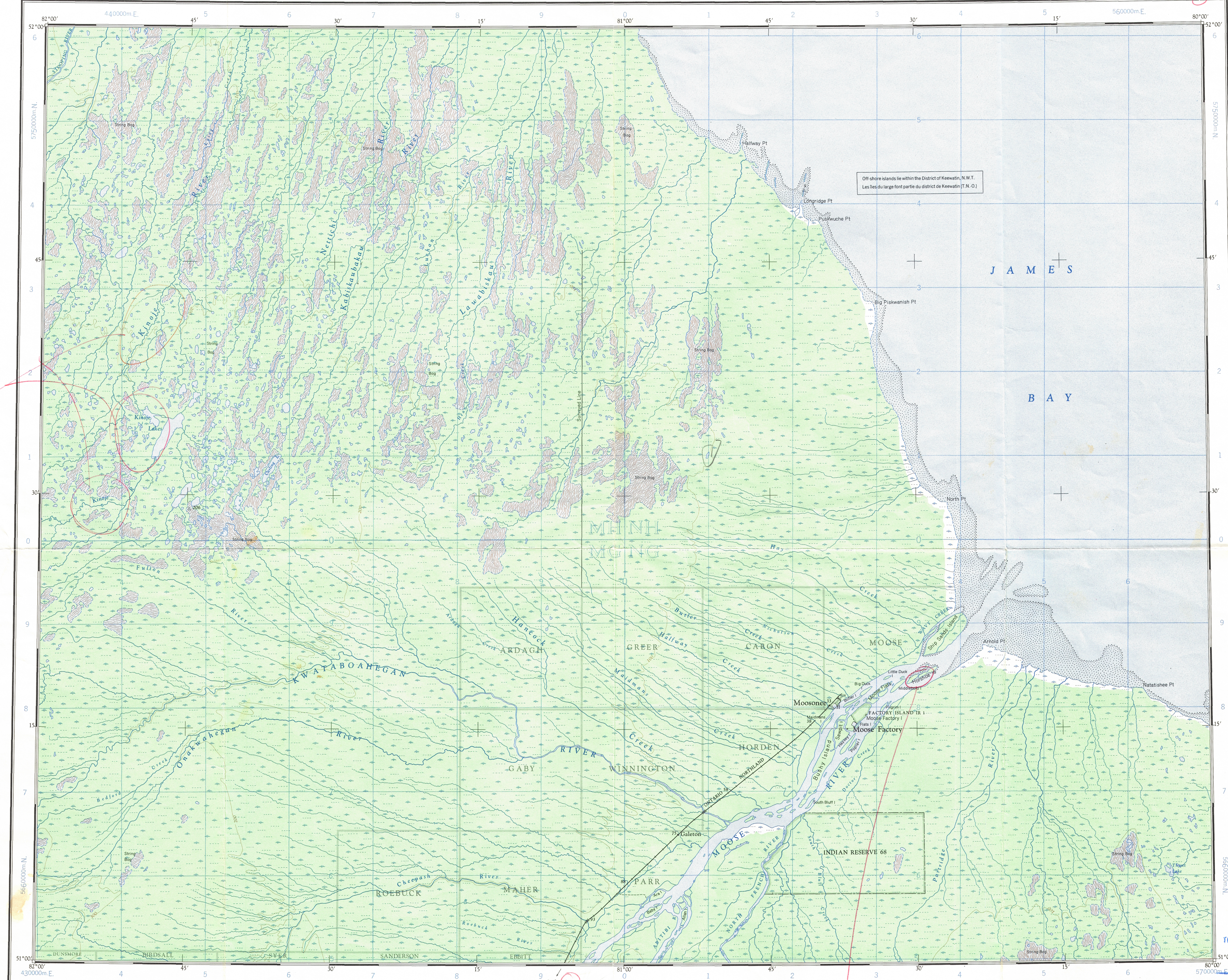
1:250,000

CANADA

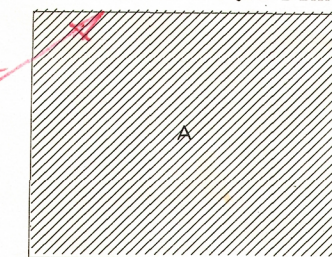
EDITION 1

42 P

Refer to
this map as:
42 P
EDITION 1 ASE
SERIES A 501



RELIABILITY DIAGRAM - CROQUIS D'EXACTITUDE



A - Stereo-compiled from 1954-55 aerial photographs.

A - Rédigé par stéréorestitution d'après des photographies aériennes prises en 1954-55.

Compiled, 1963, by the SURVEYS AND MAPPING BRANCH,
DEPARTMENT OF MINES AND TECHNICAL SURVEYS.
Field surveys 1958-60-62. Printed 1965.

Magnetic declination 1964 varies from 11°11' westerly at
centre of west edge to 13°42' westerly at centre of east
edge. Mean annual change 3.4' westerly.

Some names on this map are not yet official.
Corrections or additions are invited by the
Surveys and Mapping Branch.

Certains noms inscrits sur cette carte ne sont
pas encore officiels. La Direction des levés et
des relevés techniques saurait gré au public de lui
signaler corrections et additions.

MOOSONEE
COCHRANE DISTRICT
ONTARIO

Scale 1:250,000 Échelle



Transverse Mercator Projection
North American Datum 1927
Contour interval 100 feet
Elevations in feet above Mean Sea Level

Projection Transverse de Mercator
Niveau de référence nord-américain, 1927
Équidistance des courbes: 100 pieds
Élévations en pieds au-dessus du niveau moyen de la mer

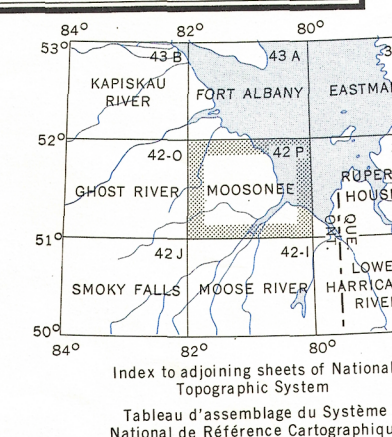
Copies may be obtained from the Map Distribution Office,
Department of Mines and Technical Surveys, Ottawa.

Ces cartes sont en vente au Bureau de distribution des cartes,
ministère des Mines et des Relevés techniques, Ottawa.

Off-shore islands lie within the District of Keewatin, N.W.T.
Les îles du large font partie du district de Keewatin (T.N.-O.)

GRID ZONE DESIGNATION	100,000 M. SQUARE IDENTIFICATION
17U	
TO GIVE A REFERENCE TO NEAREST 1000 METRES	
EXAMPLE: SURVEY MONUMENT	
SQUARE: Road letters of 100,000 m. square: MH	
EASTING: Road number on grid line immediately to left of point	4
Estimate tenths of a square from this line eastward to point.	48
NORTHING: Road number on grid line immediately below point	0
Estimate tenths of a square from this line northward to point.	04
MILITARY GRID REFERENCE (to nearest 1,000 metres)	MH 4804
If reporting beyond 18° in any direction, prefix Grid Zone Designation as: 17UMH4804	

TEN THOUSAND METRE
UNIVERSAL TRANSVERSE MERCATOR GRID
ZONE 17
SERVICE TOPOGRAPHIQUE
DATE: 15-1-80
C.O. APPROVES RELEASE
C.O. APPROUVE



MOOSONEE
42 P
EDITION 1