

Ce document est le produit d'une numérisation par balayage de la publication originale.  
This document was produced by scanning the original publication.

43 K

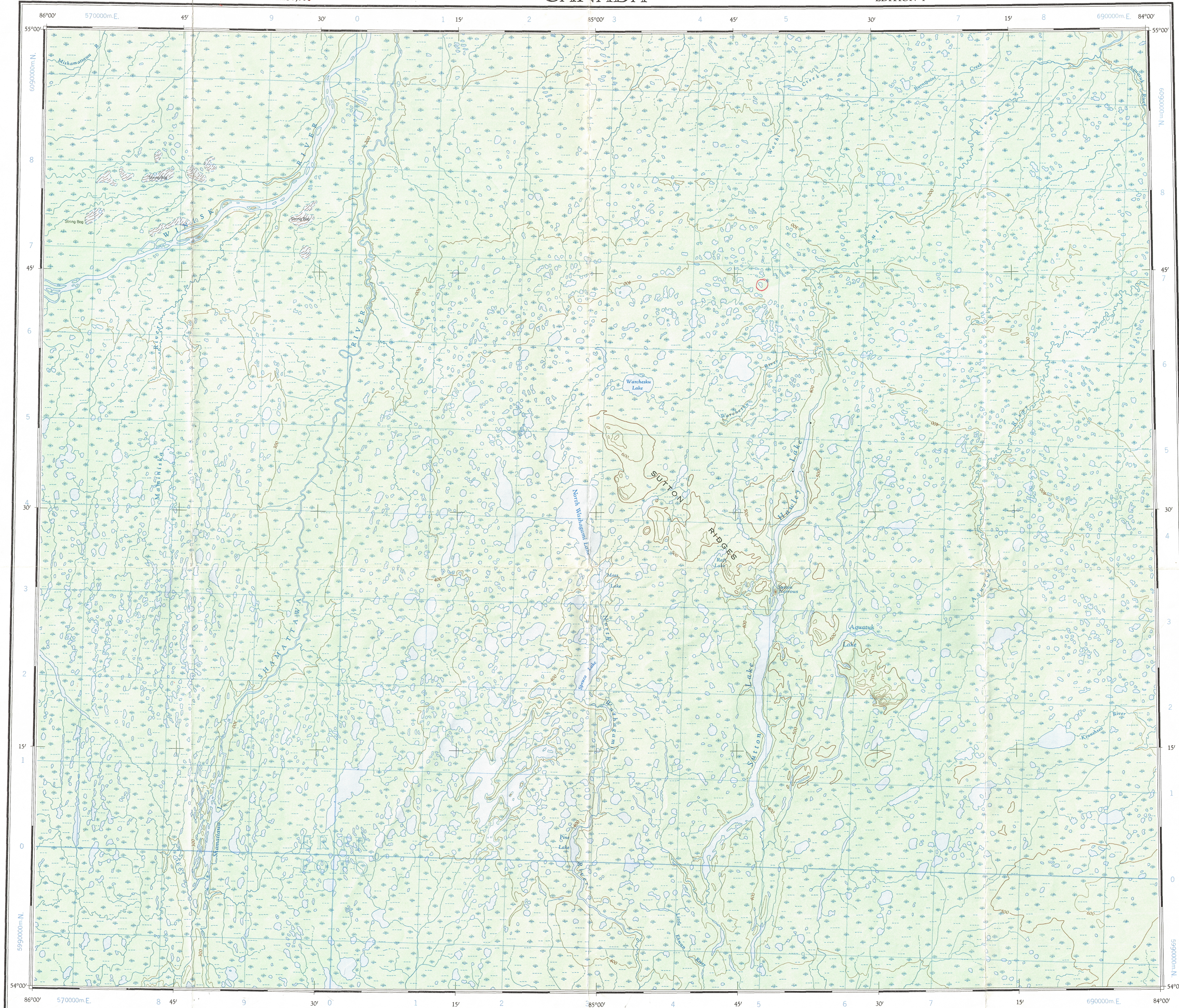
1:250,000

CANADA

EDITION 1

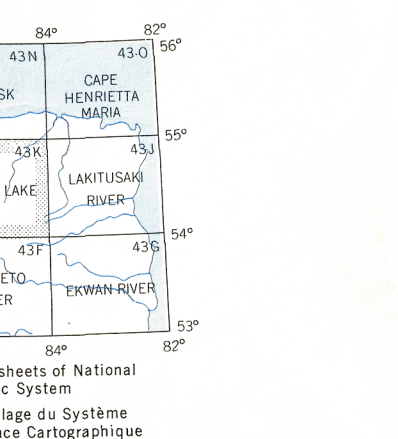
43 K

Refer to this map as: 43 K EDITION 1 ASE SERIES A 501

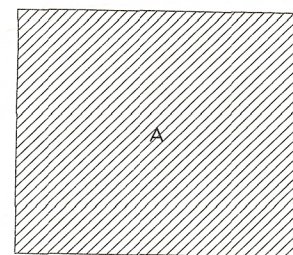


100,000 M. SQUARE IDENTIFICATION	
GRID ZONE DESIGNATION	16U
EXAMPLE: BUILDING	FR
SQUARE: Read letters of 100,000 m. square	FR
EASTING: Read number on grid line immediately to left of point	5
Estimate tenths of a square from this line eastward to point.	5.2
NORTHING: Read number on grid line immediately below point	4
Estimate tenths of a square from this line northward to point.	4.6
MILITARY GRID REFERENCE (to nearest 1,000 metres)	FR5246
If reporting beyond 18° in any direction, prefix Grid Zone Designation as: 16UF R5246	

TEN THOUSAND METRE  
UNIVERSAL TRANSVERSE MERCATOR GRID  
ZONE 16



RELIABILITY DIAGRAM - CROQUIS D'EXACTITUDE



A - Stereo compiled, from aerial photographs taken in 1955-56.

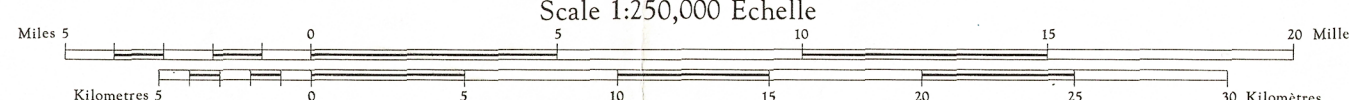
A - Rédigé par stéréorestitution d'après des photographies aériennes prises en 1955-56.

Compiled, 1964, by the SURVEYS AND MAPPING BRANCH,  
DEPARTMENT OF MINES AND TECHNICAL SURVEYS.  
Faisit survey 1959-62. Printed 1966.

Magnetic declination 1965 varies from 0°18' westerly at  
centre of west edge to 1°45' westerly at centre of east  
edge. Mean annual change 4.5 westerly.

SUTTON LAKE  
KENORA DISTRICT  
ONTARIO

Scale 1:250,000 Échelle



Transverse Mercator Projection  
North American Datum 1927  
Contour Interval 100 feet  
Elevations in feet above Mean Sea Level

Projection Transverse de Mercator  
Niveau de référence nord-américain, 1927  
Équidistance des courbes: 100 pieds  
Élévations en pieds au-dessus du niveau moyen de la mer

Copies may be obtained from the Map Distribution Office,  
Department of Mines and Technical Surveys, Ottawa.

Ces cartes sont en vente au Bureau de distribution des cartes,  
ministère des Mines et des Relevés techniques, Ottawa.

Rédigée en 1964, par la DIRECTION DES LEVÉS ET DE LA CARTOGRAPHIE,  
MINISTÈRE DES MINES ET DES RELEVÉS TECHNIQUES. Levés sur le terrain  
en 1959-62. Imprimée en 1966.

La déclinaison magnétique pour 1965 varie de 0°18' Ouest  
au centre de la limite Ouest à 1°45' Ouest au centre de la  
limite Est. Variation moyenne annuelle 4.5 Est.

RELUCTANTLY ACCEPTED, FAULTY AIR  
CONDITION, IN PRESS ROOM,  
TOPOGRAPHICAL SURVEY DIRECTORATE  
SERVICE TOPOGRAPHIQUE

DATE 12.2.71  
Q.C. APPROVES  
C.O. APPROVE

SUTTON LAKE  
43 K  
EDITION 1

REPORT