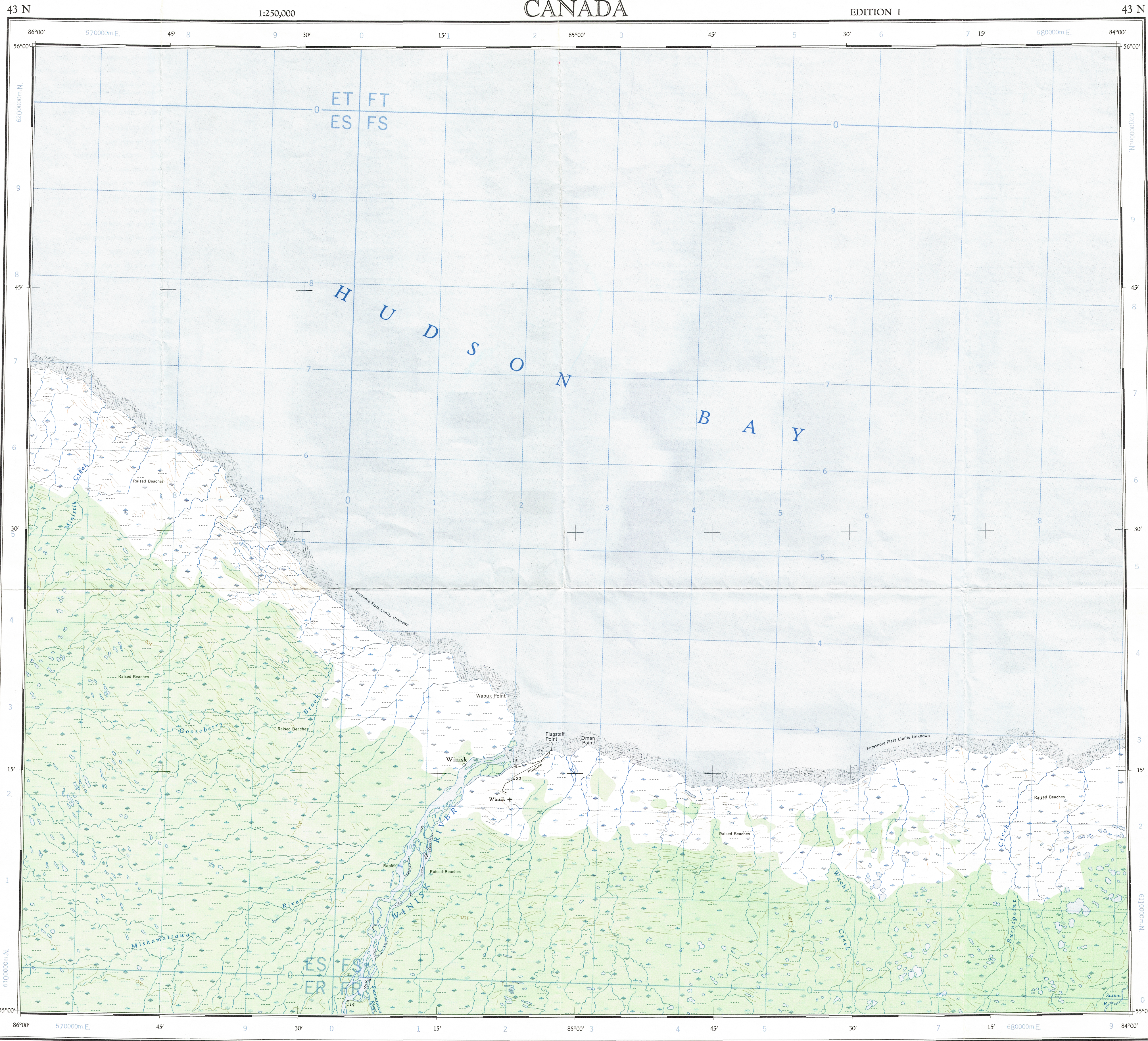


Ce document est le produit d'une numérisation par balayage de la publication originale.
This document was produced by scanning the original publication.



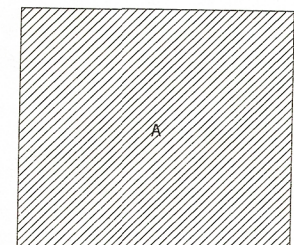
Refer to this map as: 43 N EDITION 1 ASE SERIES A 501

GRID ZONE DESIGNATION		100,000 M. SQUARE IDENTIFICATION	
16U	ET	ES	FS
	ES	FS	FS
	ES	FS	FS
	ES	FS	FS
TO GIVE A REFERENCE TO NEAREST 1000 METRES			
EXAMPLE: BUILDING			
SQUARE: Road letters of 100,000 m. square FS			
EASTING: Road number on grid line immediately to left of point			
Estimate tenths of a square from this line eastward to point.			
NORTHING: Road number on grid line immediately below point			
Estimate tenths of a square from this line northward to point.			
MILITARY GRID REFERENCE (to nearest 1,000 metres)			
If reporting beyond 18° in any direction, prefix Grid Zone Designation as: 16UFS1922			

TEN THOUSAND METRE
UNIVERSAL TRANSVERSE MERCATOR GRID
ZONE 16

ORIGINAL FILE
MISSINIB 8-10-87
MRO.

RELIABILITY DIAGRAM - CROQUIS D'EXACTITUDE

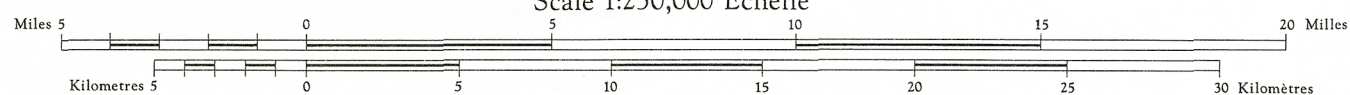


A - Stereo compiled from aerial photographs taken in 1955-56.
A - Révisé par stéréoscopie d'après des photographies aériennes prises en 1955-56.

Compiled, 1964, by the SURVEYS AND MAPPING BRANCH,
DEPARTMENT OF MINES AND TECHNICAL SURVEYS.
Field surveys 1959-61. Printed 1966.

Magnetic declination 1965 varies from 0°28' westerly at
centre of west edge to 1°20' westerly at centre of east
edge. Mean annual change 5.3' easterly.

Road, dry weather. Route, temps sec.
Wagon or winter road. Chemin de terre ou d'hiver.
Trail or portage. Sentier ou portage.



Transverse Mercator Projection
North American Datum 1927
Contour Interval 100 feet
Elevations in feet above Mean Sea Level

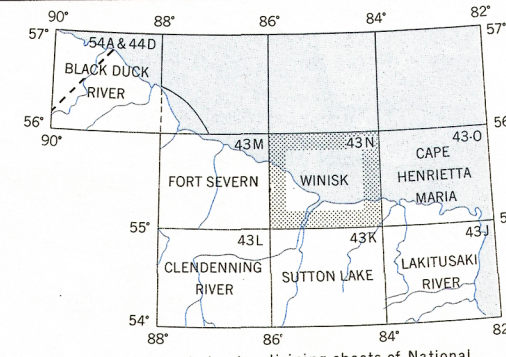
Copies may be obtained from the Map Distribution Office,
Department of Mines and Technical Surveys, Ottawa.

WINISK
KENORA DISTRICT
ONTARIO

Scale 1:250,000 Échelle

Rédigé en 1964, par la DIRECTION DES LEVÉS ET DE LA CARTOGRAPHIE,
MINISTÈRE DES MINES ET DES RELEVÉS TECHNIQUES. Levé sur le terrain
en 1959-61. Imprimé en 1966.

La déclinaison magnétique pour 1965 varie de 0°28' Ouest
au centre de la limite Ouest à 1°20' Ouest au centre de la
limite Est. Variation moyenne annuelle 5.3' Est.



Index to adjoining sheets of National
Topographic System
Tableau d'assemblage du Système
National de Référence Cartographique

WINISK
43 N
EDITION 1