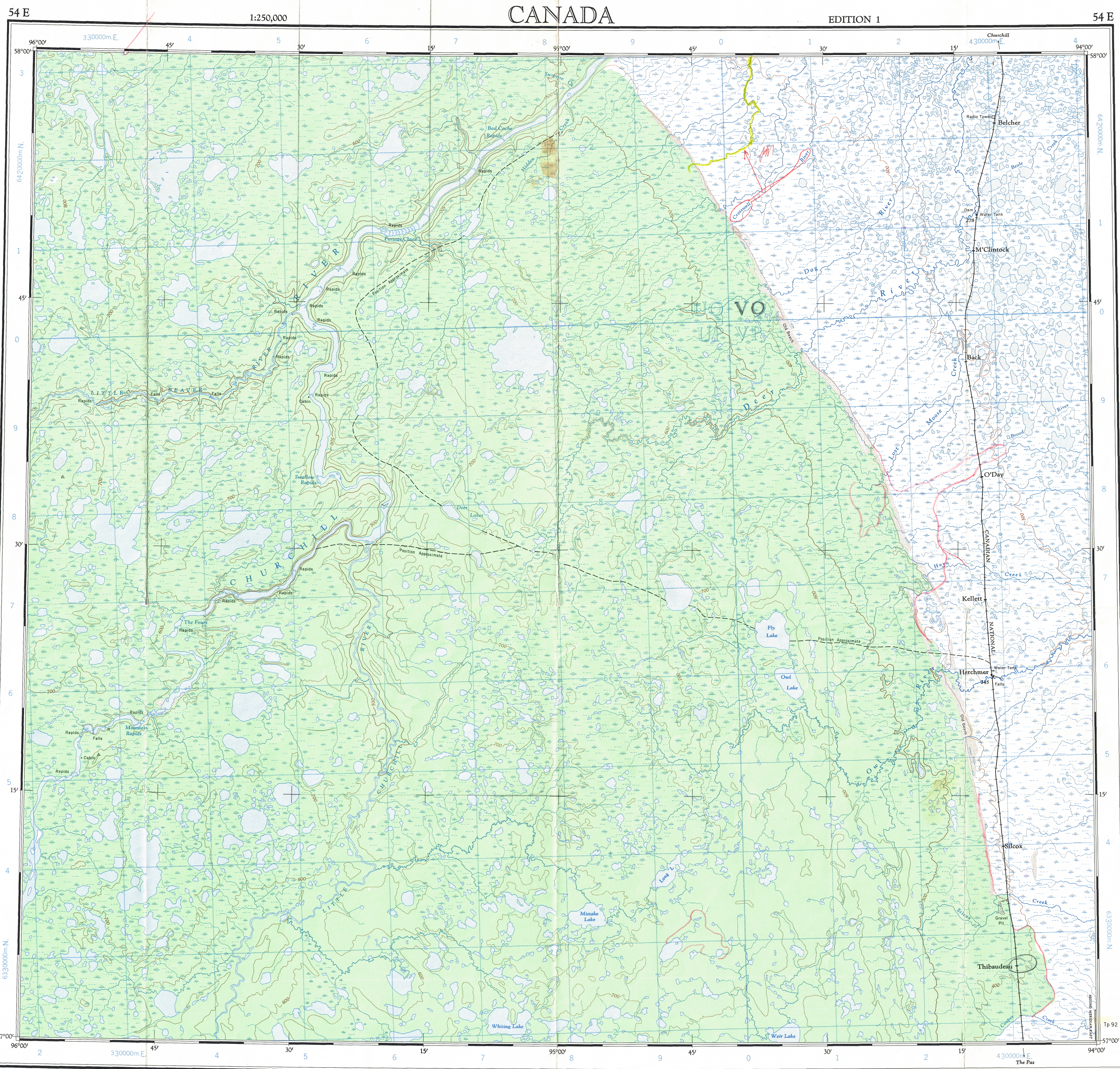


Ce document est le produit d'une numérisation par balayage de la publication originale.
This document was produced by scanning the original publication.



Refer to this map as: 54 E EDITION 1 ASE SERIES A 501

DMP, S.P.C. CARTOGRAPHY DIVISION
DIVISION DE LA CARTOGRAPHIE
DATE 1-4-10
Q.C. APPROVES RELEASE
C.Q. APPROUVE

100,000 M. SQUARE IDENTIFICATION	
GRID ZONE DESIGNATION	15V
TO GIVE A REFERENCE TO NEAREST 1000 METRES	
EXAMPLE: CABIN	
SQUARE: Read letters on grid line immediately to left of point	5
Estimate tenths of a square from this line eastward to point	2
NORTHING: Read number on grid line immediately below point	9
Estimate tenths of a square from this line northward to point	3
MILITARY GRID REFERENCE (to nearest 1,000 metres)	UP5293
If reporting beyond 10° in any direction, prefix Grid Zone Designation as: 15VUP5293	

TEN THOUSAND METRE
UNIVERSAL TRANSVERSE MERCATOR GRID
ZONE 15

RELIABILITY DIAGRAM - CROQUIS D'EXACTITUDE
A
A - Stereo-compiled from 1954-55 aerial photographs.
A - Etalée par stéréo restitution d'après des photos aériennes prises en 1954-55.

Compiled 1962, by the SURVEYS AND MAPPING BRANCH, DEPARTMENT OF MINES AND TECHNICAL SURVEYS. Field surveys 1959. Printed 1964.
Magnetic declination 1965 varies from 07°58' easterly at centre of west edge to 03°44' westerly at centre of east edge. Mean annual change, 2.4' easterly.
Some names on this map are not yet official. Corrections or additions are invited by the Surveys and Mapping Branch.
Certains noms inscrits sur cette carte ne sont pas encore officiels. La Direction des levés et de la cartographie saurait gré au public de lui signaler corrections et additions.

Scale 1:250,000 Échelle
Kilometres 5 0 5 10 15 20 Kilomètres
Miles 5 0 5 10 15 Miles
Transverse Mercator Projection
North American Datum, 1927
Contour Interval 100 feet
Elevations in feet above Mean Sea Level
Projection Transverse de Mercator
Niveau de référence nord-américain, 1927
Équidistance des courbes: 100 pieds
Élévations en pieds au-dessus du niveau moyen de la mer
Copies may be obtained from the Map Distribution Office, Department of Mines and Technical Surveys, Ottawa.
Ces cartes sont en vente au Bureau de distribution des cartes, ministère des Mines et des Relevés techniques, Ottawa.

Stream Cours d'eau
Intermittent or dry Intermittent ou à sec
Indefinite Impécrite
Rapids; falls Rapides; chute
Marsh or swamp Marais ou marécage
Intermittent lake Lac intermittent
Depression contours. Courbes de cuvette
Spot Elevation, in feet. Repère de nivellement en pieds. 2500.

Index to adjoining sheets of National Topographic System
Tableau d'assemblage du Système National de Référence Cartographique
SHEWAN LAKE CHURCHILL CAPE CHURCHILL
NORTHERN INDIAN LAKE HERCHMER YORK FACTORY
SPLIT LAKE WETLE RAPIDS HAYES RIVER

HERCHMER
54 E
EDITION 1

54-E
Contract Printing
Reprint.