

Ce document est le produit d'une numérisation par balayage de la publication originale.
This document was produced by scanning the original publication.

CONFIRMED
MARY LAHAM
Mou 4/77

THIS NAME NOT APPROVED.
AS YET.
BRIAN YOUNG, GEOG. NAMES BOARD.
A.M.C. 14.2.77 1:250,000

CANADA

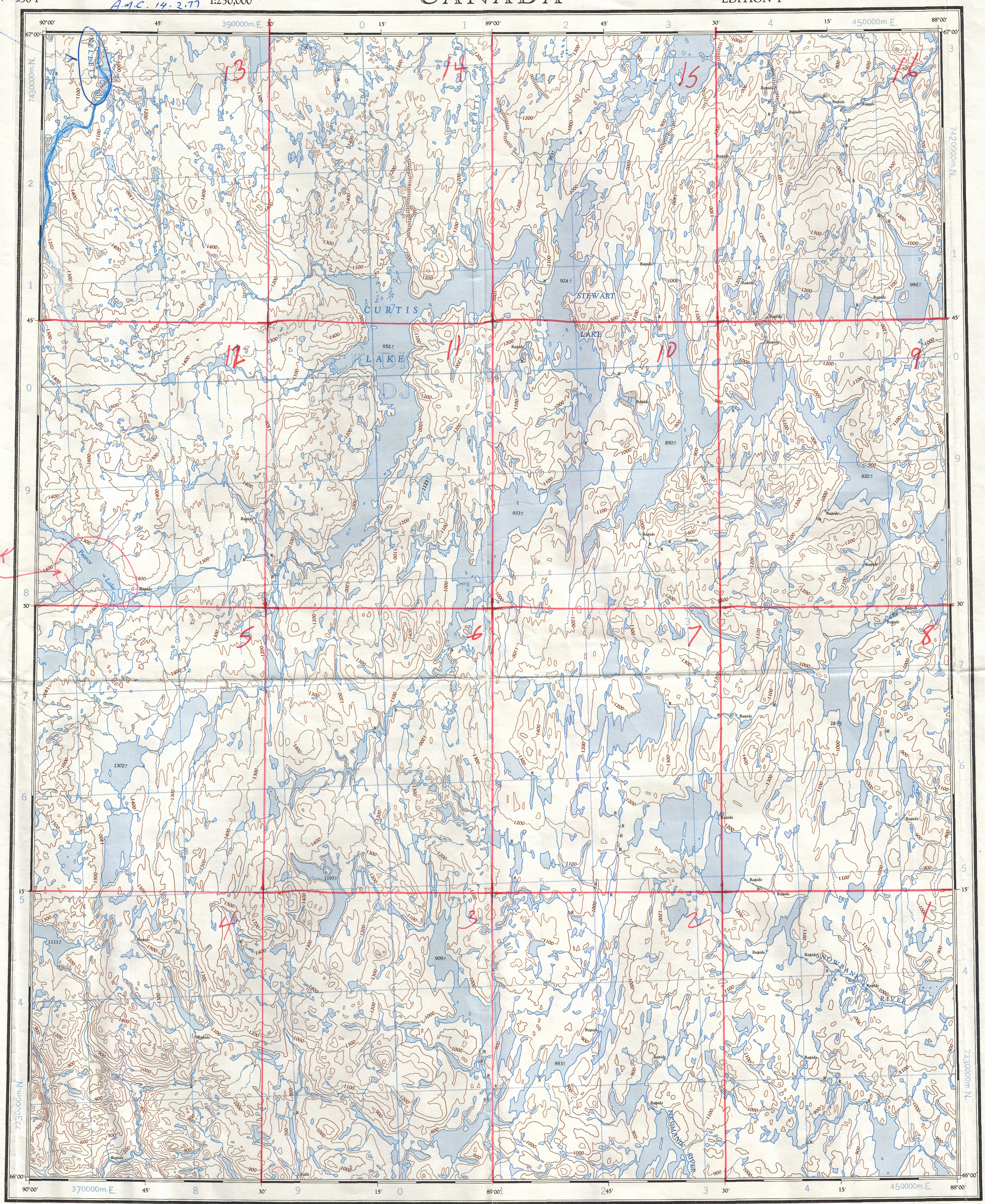
EDITION 1

56 I

Refer to this map as:
56 I
EDITION 1 ASE
SERIES A 501

NAMES 1968
B. YOUNG 6-29-68

NAME OK
D.KINES
1/4/77



GRID ZONE DESIGNATION
16W

100,000 M. SQUARE IDENTIFICATION
CDK
CJ DJ
40 740

TO GIVE A REFERENCE TO NEAREST 1000 METRES
EXAMPLE: ISLAND
SQUARE: Read letters of 100,000 m. square DJ
EASTING: Read number on grid line immediately to left of point
Estimate tenths of a square from this line eastward to point.
NORTHING: Read number on grid line immediately below point
Estimate tenths of a square from this line northward to point.
MILITARY GRID REFERENCE
In nearest 1,000 metres DJ3194
If reporting beyond 10° in any direction, prefix Grid Zone Designation as: 16WDJ3194

TEN THOUSAND METRE
UNIVERSAL TRANSVERSE MERCATOR GRID
ZONE 16

ADD NOTE 'A'

THE DECLINATION OF THE COMPASS NEEDLE 1961
DECLINAISON MAGNETIQUE EN 1961

The declination of the compass needle is decreasing 17 minutes annually.
La déclinaison magnétique décroît de 17 minutes annuellement.

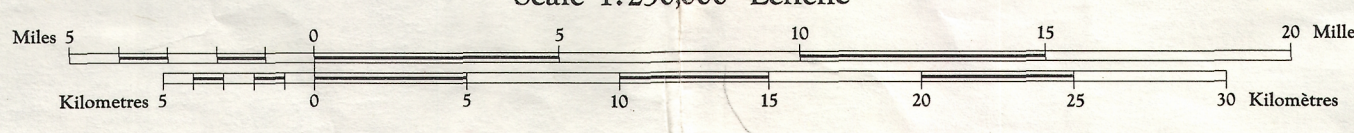
Produced by the ARMY SURVEY ESTABLISHMENT
R.C.E. 1959-61. Aerial photography 1956 and 1959.
Copies may be obtained from the Map Distribution Office,
Department of Mines and Technical Surveys, Ottawa.

CURTIS LAKE

DISTRICT OF KEEWATIN

NORTHWEST TERRITORIES

Scale 1:250,000 Échelle



- Roads: loose surface, all weather... de gravier, toute saison... less than 2 lanes... dry weather... Point coté précis, approximatif... 950 - 950? Boundary monument... Bonne frontière... Buttes de terre... Depression (contours)... Courbes de crevette... Cliff or low relief... Falaise ou relief peu accentué... Esker... Esker

Transverse Mercator Projection
North American Datum 1927
Contour Interval 100 feet
Elevations in feet above Mean Sea Level

Projection transverse de Mercator
Réseau géodésique nord-américain unifié 1927
Équidistance des courbes: 100 feet
Élévations en pieds au-dessus du niveau moyen de la mer

Préparé par le SERVICE TOPOGRAPHIQUE DE L'ARMÉE,
(G.R.C.) 1959-61. Photographie aérienne 1956 et 1959.
Ces cartes sont en vente au Bureau de distribution des cartes,
ministère des Mines et des Relevés techniques, Ottawa.

- Building... Bâtiment... Intermittent stream... Cours d'eau intermittent... Post office... Bureau de poste... Intermittent lake... Lac intermittent... Church... Église... Rapids; falls... Rapides; chute... School... École... Marsh or swamp... Marais ou marécage... Astronomical monument... Repère astronomique... String bogs... Marais en chapelet... R.C.M.P. Detachment... Poste de la G.R.C... Icefield or Glacier, Champ de glace ou glacier... Horizontal control point... Point géodésique... Tundra Polygons... Sols polygonaux... Landing ground... Piste d'atterrissage... Tundra Ponds... Étangs de toundra

Index to adjoining sheets of the National Topographic System
Tableau d'assemblage du Système National de Référence Cartographique.

CURTIS LAKE
56 I
EDITION 1