

Ce document est le produit d'une
numérisation par balayage
de la publication originale.

This document was produced
by scanning the original publication.

56 L

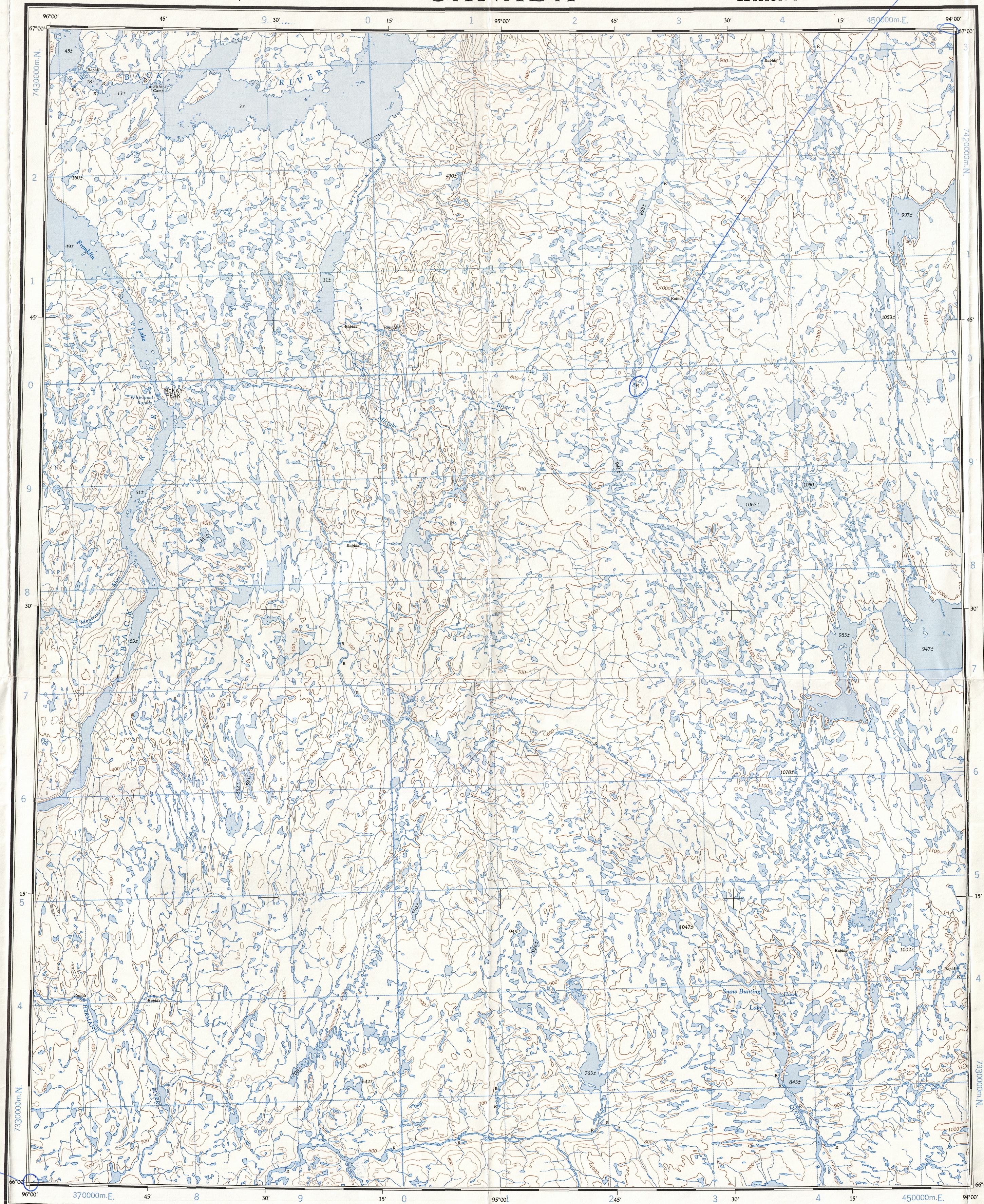
1:250,000

CANADA

EDITION 1

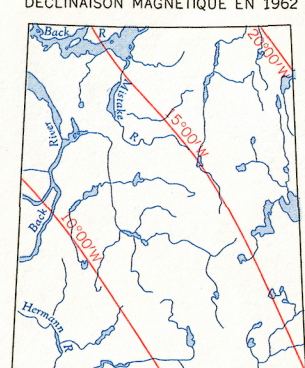
56 L

Refer to
this map as:
56 L
EDITION 1 ASE
SERIES A 501



Detail Hiking - Small lake

THE DECLINATION OF THE COMPASS NEEDLE 1962
DECLINAISON MAGNETIQUE EN 1962



The declination of the compass needle is decreasing
6 minutes annually.
La déclinaison magnétique décroît de 6 minutes annuellement.

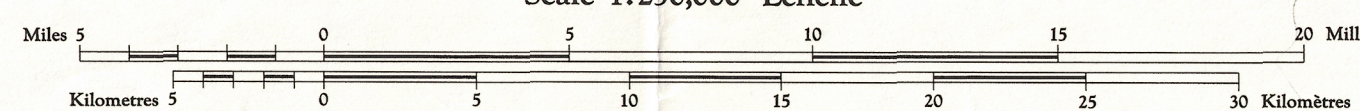
Produced by the ARMY SURVEY ESTABLISHMENT, R.C.E.
Information depicted current as of 1957.
Copies may be obtained from the Map Distribution Office,
Department of Mines and Technical Surveys, Ottawa.

MISTAKE RIVER

DISTRICT OF KEEWATIN

NORTHWEST TERRITORIES

Scale 1:250,000 Échelle



1957

Transverse Mercator Projection
North American Datum 1927
Contour Interval 100 feet
Elevations in feet above Mean Sea Level

Projection transverse de Mercator
Réseau géodésique nord-américain unifié 1927
Équidistance des courbes: 100 pieds
Élévations en pieds au-dessus du niveau moyen de la mer

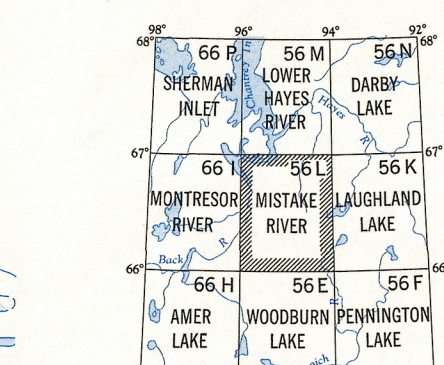
Publiée par le SERVICE TOPOGRAPHIQUE DE L'ARMÉE,
(G.R.C.) Renseignements à jour en 1957.
Ces cartes sont en vente au Bureau de distribution des cartes,
ministère des Mines et des Relevés techniques, Ottawa.

Roads: loose surface, all weather... de gravier, toute saison...
cart track, trail... de terre, sentier...
Spot elevation; precise, approximate... Point coté; précis, approximatif...
Boundary monument... Borne-frontière...
Pingo... Buttes de terre...
Depression contour... Courbes de cuvette...
Cliff or low relief... Falaise ou relief peu accentué...
Esker... Esker...

Building... Bâtiment...
Post office... Bureau de poste...
Church... Église...
School... École...
Astronomical monument... Repère astronomique...
R.C.M.P. Detachment... Poste de la G.R.C...
Horizontal control point... Point géodésique...
Landing ground... Piste d'atterrissage...
Intermittent stream... Cours d'eau intermittent...
Intermittent lake... Lac intermittent...
Rapids; falls... Rapides; chute...
Marsh or swamp... Marais ou marécage...
String bogs... Marais en chapelet...
Icefield or Glacier... Champ de glace ou glacier...
Tundra Ponds... Sols polygonaux...
Tundra Ponds... Étangs de toundra...

GRID ZONE DESIGNATION
15W
100,000 M. SQUARE IDENTIFICATION
Easting: 740
Northing: 40
TO GIVE A REFERENCE TO NEAREST 1000 METRES
EXAMPLE: RAPIDS
SQUARE: Read letters of 100,000 m. square UD
EASTING: Read number on grid line immediately to left of point
Estimate tenths of a square from this line eastward to point.
NORTHING: Read number on grid line immediately below point
Estimate tenths of a square from this line northward to point.
MILITARY GRID REFERENCE
On map: 15WUD9574
If reporting beyond 18° in any direction
prefix Grid Zone Designation as: 15WUD9574

TEN THOUSAND METRE
UNIVERSAL TRANSVERSE MERCATOR GRID
ZONE 15



MISTAKE RIVER
56 L
EDITION 1

TOPOGRAPHICAL SURVEY DIRECTORATE
SERVICE TOPOGRAPHIQUE
DATE: 24.06.81
Q.C. APPROVES RELEASE
C.Q. APPROUVE

JUN 1 1981

Reprint

56-L