

This document was produced
numerically by computer
by scanning the original publication.

63 D

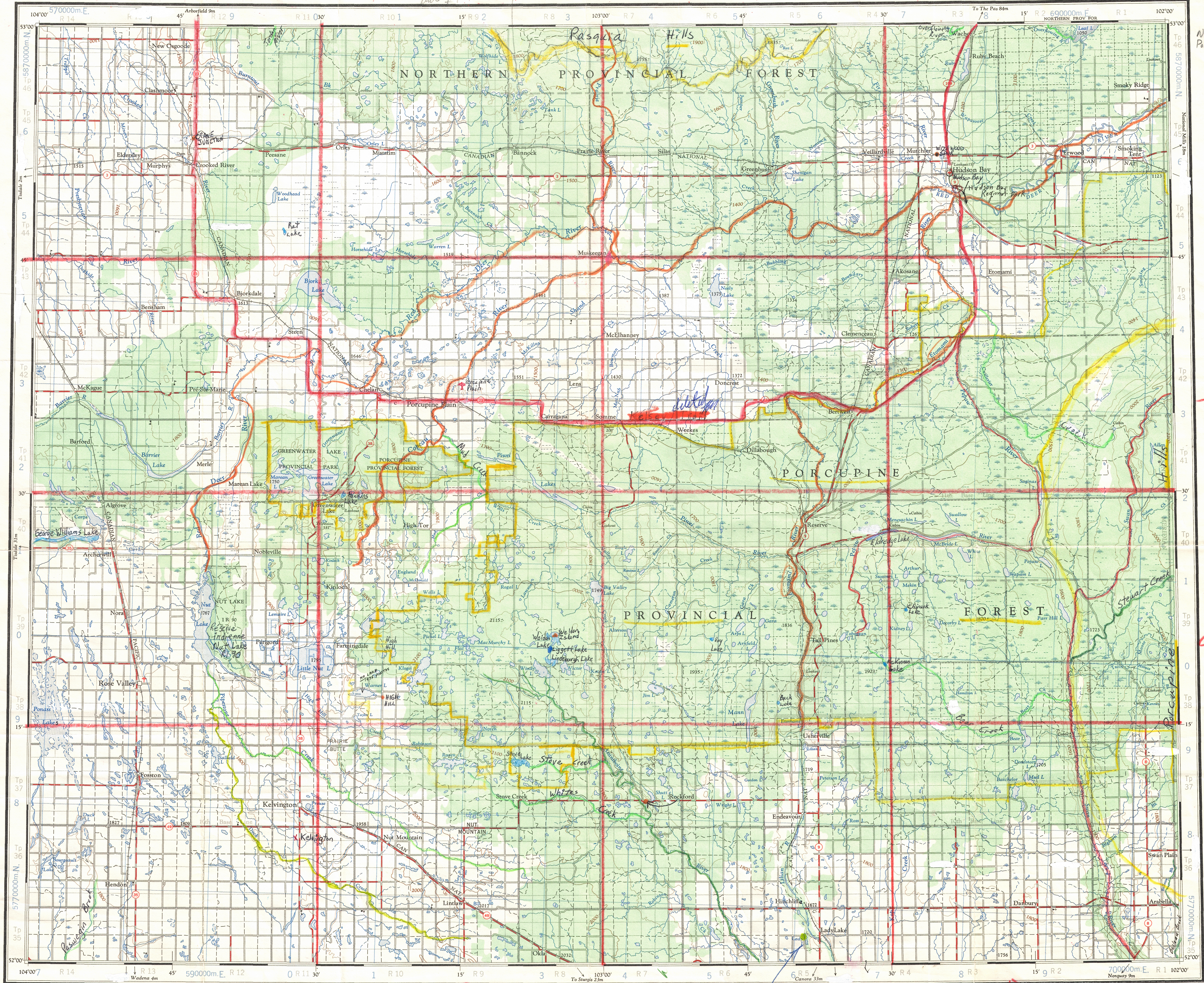
1:250,000

CANADA

EDITION 1

63 D

Refer to
this map as:
63 D
EDITION 1 ASE
SERIES A 502
Northern Provincial Forest
Porcupine Provincial Forest
listed as per printed map
(phoned Bert Waters 2/11/81)



GRID ZONE
DESIGNATION
13U
100,000 M. SQUARE IDENTIFICATION
EJ FH GH 58
6
TO GIVE A REFERENCE TO NEAREST 1000 METRES
EXAMPLE: LOOKOUT TOWER
SQUARE: Read letters of 100,000 m. square FJ
EASTING: Read number on grid line immediately to left of point
Estimate tenths of a square from this line eastward to point.
NORTHING: Read number on grid line immediately below point
Estimate tenths of a square from this line northward to point.
MILITARY GRID REFERENCE (to nearest 1,000 metres)
FJ3515
If reporting beyond 18° in any direction, prefix Grid Zone Designation as: 13U FJ3515

TEN THOUSAND METRE
UNIVERSAL TRANSVERSE MERCATOR GRID
ZONE 13

THE DECLINATION OF THE COMPASS NEEDLE 1963
DECLINAISON MAGNETIQUE EN 1963
The declination of the compass needle is decreasing 2.2 minutes annually.
La déclinaison magnétique décroît de 2.2 minutes annuellement

Produced by the ARMY SURVEY ESTABLISHMENT, R.C.E.
Information depicted current as of 1961. Printed 1966.
Copies may be obtained from the Map Distribution Office,
Department of Mines and Technical Surveys, Ottawa.

Roads
hard surface, all weather: pavé, toute saison
loose surface, all weather: de gravier, toute saison
cart track: de terre
Railway, normal gauge: Chemin de fer, écartement normal
Township or Parish: Canton ou Paroisse
Depression contours: Courbes de cuvette
Spot elevation: precise, approximate: Point coté; précis, approximatif
Power transmission line: Ligne de transport d'énergie

more than 2 lanes: plus de 2 voies
2 lanes: 2 voies
less than 2 lanes: moins de 2 voies
2 lanes or more: 2 voies ou plus
2 lanes or more: 2 voies ou plus
single track: voie unique
multiple track: voies multiples
single track (abandoned): (abandonnée)
multiple track (abandoned): (abandonnée)
single track: voie unique
multiple track: voies multiples
single track (abandoned): (abandonnée)
multiple track (abandoned): (abandonnée)

HUDSON BAY
SASKATCHEWAN
WEST OF SECOND MERIDIAN
Scale 1:250,000 Échelle
Transverse Mercator Projection
North American Datum 1927
Contour Interval 100 feet
Elevations in feet above Mean Sea Level

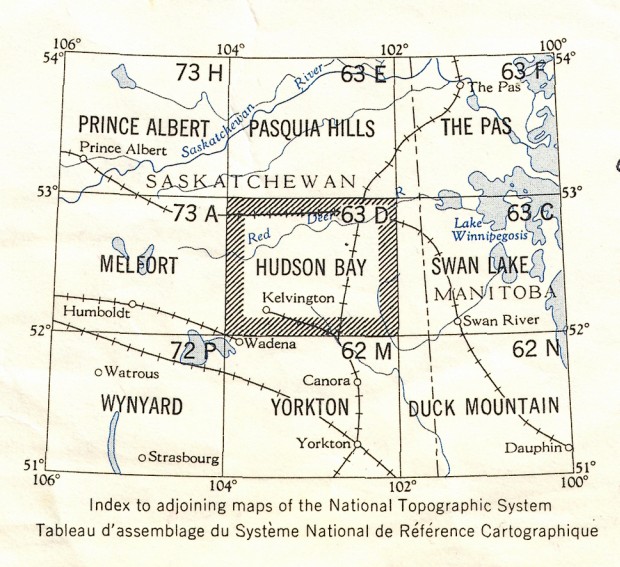
Projection transverse de Mercator
Réseau géodésique nord-américain unifié 1927
Équidistance des courbes 100 pieds
Élévations en pieds au-dessus du niveau moyen de la mer

Scale 1:250,000 Échelle
Kilometres 5 0 5 10 15 20 25 30
Miles 5 0 5 10 15 20 25 30

STURGIS & DISTRICT
REGIONAL PARK
checked with KIMCO
Aug 21/81 (no plans
as yet)

Publié par le SERVICE TOPOGRAPHIQUE DE L'ARMÉE,
(G.R.C.). Renseignements à jour en 1961. Imprimée en 1966.
Ces cartes sont en vente au Bureau de distribution des cartes,
ministère des Mines et des Relevés techniques, Ottawa.

Stream
intermittent or dry
intermittent ou à sec
Intermittent lake
Lac intermittent
Rapid; falls
Rapides; chute
Marsh or Swamp
Marais ou marécage
Lighthouse
Phare
Horizontal control - int.
Point géodésique
Landing ground
Piste d'atterrissage
Seaplane anchorage
Amarrage d'hydravions



Names Manuscript
Project # 04-1046
Date: 2/1/81
Compiled: Jule
update 4 July 1983
HUDSON BAY
63 D
EDITION 1