

This document was produced
numerically by the original publication
by scanning the original publication.

63 N

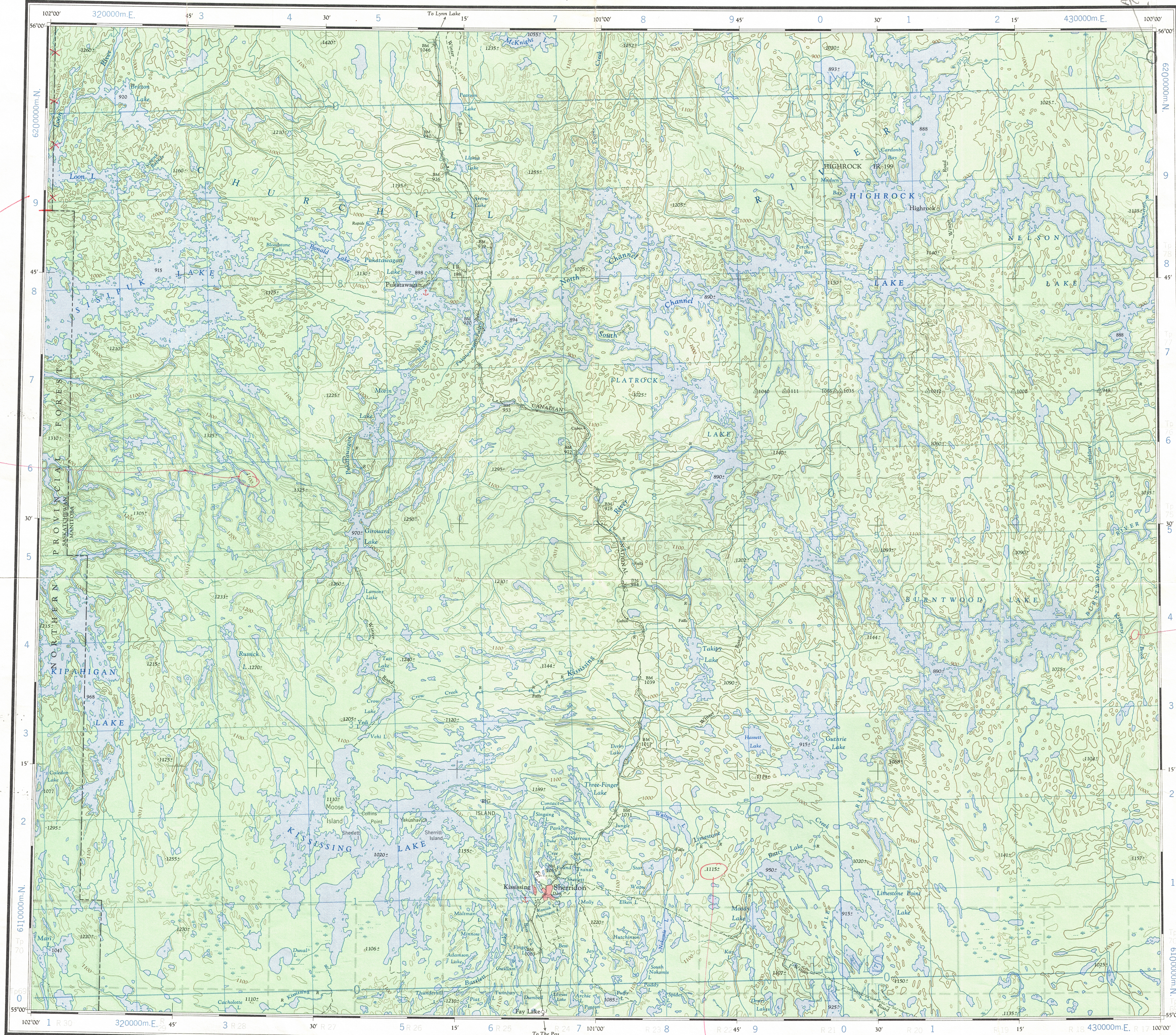
1:250,000

CANADA

EDITION 2

63 N

Refer to
this map as:
63 N
EDITION 2 ASE
SERIES A 502



According to 50000
hill is 1100+ high.

100,000 M. SQUARE IDENTIFICATION	
GRID ZONE DESIGNATION 14 U	LTMT-62 LSMS-61 LSMR-4
TO GIVE A REFERENCE TO NEAREST 1000 METRES	
EXAMPLE: CABIN	
SQUARE: Read letters of 100,000 m. square LS	
EASTING: Read number on grid line immediately to left of point	7
Estimate tenths of a square from this line eastward to point.	77
NORTHING: Read number on grid line immediately below point	4
Estimate tenths of a square from this line northward to point.	41
MILITARY GRID REFERENCE (to nearest 1,000 metres)	LS7741
If reporting beyond 18° in any direction, prefix Grid Zone Designation as: 14ULS7741	

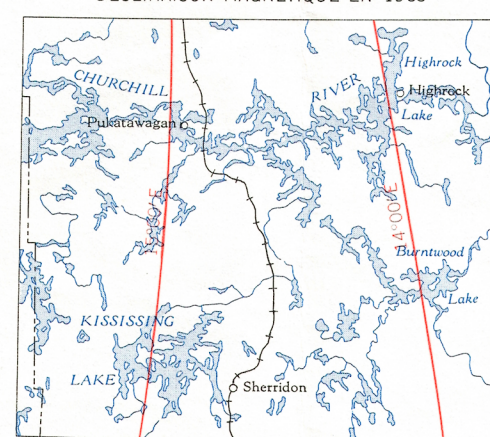
TEN THOUSAND METRE
UNIVERSAL TRANSVERSE MERCATOR GRID
ZONE 14

TOPOGRAPHICAL SURVEY DIRECTORATE
SERVICE TOPOGRAPHIQUE

Q.C. APPROVES RELEASE
C.Q. APPROUVE

KISSISSING
63 N
EDITION 2

THE DECLINATION OF THE COMPASS NEEDLE 1963
DÉCLINAISON MAGNÉTIQUE EN 1963

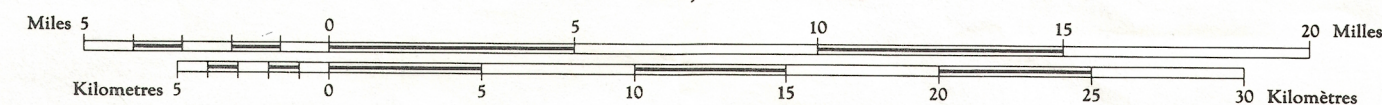


Produced by the ARMY SURVEY ESTABLISHMENT, R.C.E.
Information depicted current as of 1961. Printed 1965.

Copies may be obtained from the Map Distribution Office,
Department of Mines and Technical Surveys, Ottawa.

KISSISSING MANITOBA - SASKATCHEWAN WEST OF PRINCIPAL MERIDIAN

Scale 1:250,000 Échelle



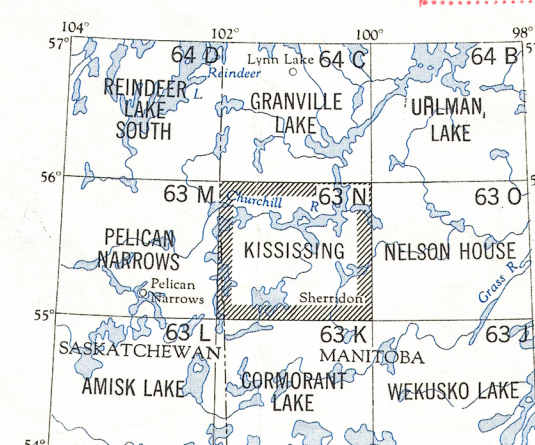
Transverse Mercator Projection
North American Datum 1927
Contour Interval 100 feet
Elevations in feet above Mean Sea Level

Projection transverse de Mercator
Réseau géodésique nord-américain unité 1927
Équidistance des courbes 100 pieds
Élévations en pieds au-dessus du niveau moyen de la mer

Publiée par le SERVICE TOPOGRAPHIQUE DE L'ARMÉE,
(G.R.C.). Renseignements à jour en 1961. Imprimée en 1965.

Ces cartes sont en vente au Bureau de distribution des cartes,
ministère des Mines et des Relevés techniques, Ottawa.

Town	Ville	Stream	Cours d'eau
Village or Settlement	Village ou hameau	Intermittent or dry	Intermittent ou à sec
Post Office	Bureau de poste	Intermittent lake	Lac intermittent
Church	Église	Rapids; falls	Rapides; chute
School	École	Marsh or Swamp	Marais ou marécage
Boundary monument	Borne-frontière	Lighthouse	Phare
Airport	Aéroport	Horizontal control point	Point géodésique
Seaplane base	Base d'hydravions	Landing ground	Piste d'atterrissage
		Seaplane anchorage	Amarrage d'hydravions



Index to adjoining maps of the National Topographic System
Tableau d'assemblage du Système National de Référence Cartographique