

This document was produced
by scanning the original publication.
Ce document est le produit d'une
numérisation par balayage
de la publication originale.

65G

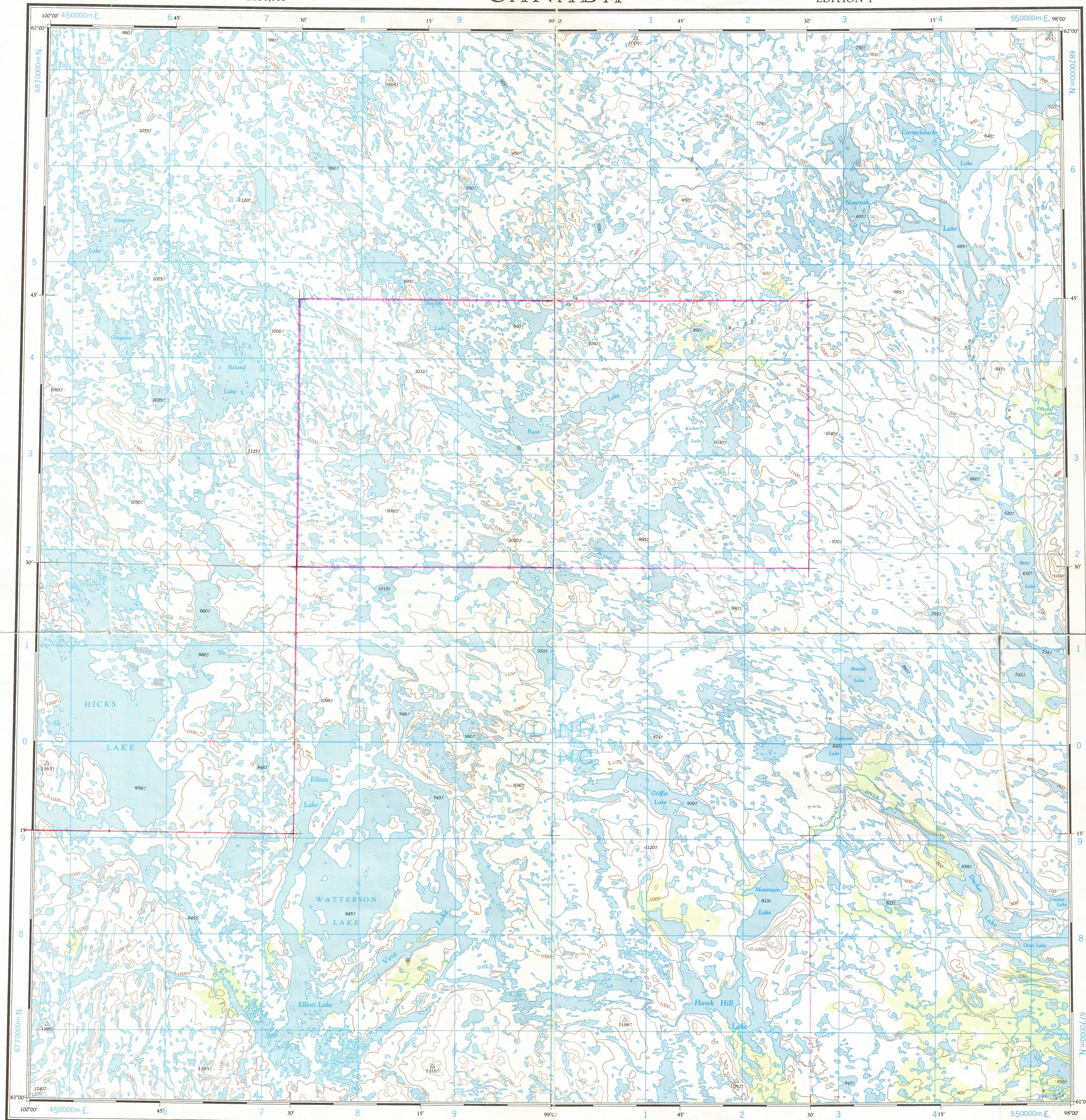
1:250,000

CANADA

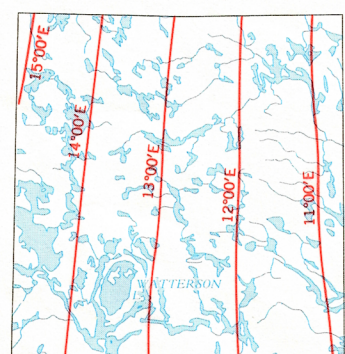
EDITION 1

65G

Refer to
this map as:
65 G
EDITION 1 ASE
SERIES A 502



THE DECLINATION OF THE COMPASS NEEDLE 1963
DÉCLINAISON MAGNÉTIQUE EN 1963



The declination of the compass needle is increasing
1.0 minutes annually.
La déclinaison magnétique croissante de 1.0 minutes annuellement.

Produced by the ARMY SURVEY ESTABLISHMENT, R.C.E.
Information depicted current as of 1961.

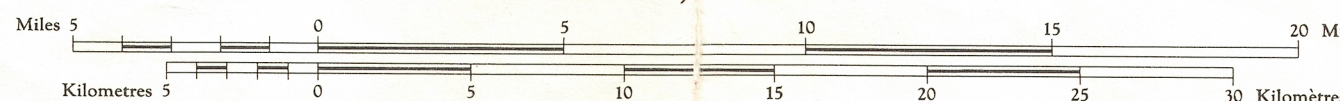
Copies may be obtained from the Map Distribution Office,
Department of Mines and Technical Surveys, Ottawa.

WATTERSON LAKE

DISTRICT OF KEKWATIN

NORTHWEST TERRITORIES

Scale 1:250,000 Échelle



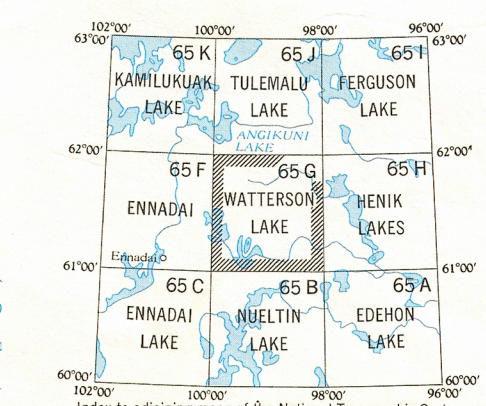
Transverse Mercator Projection
North American Datum 1927
Contour Interval 100 feet
Elevations in feet above Mean Sea Level

Projection transverse de Mercator
Réseau géodésique nord-américain 1927
Équidistance des courbes: 100 pieds
Élévations en pieds au-dessus du niveau moyen de la mer

Publiée par le SERVICE TOPOGRAPHIQUE DE L'ARMÉE,
(G.R.C.), Renseignements à jour en 1961.

Ces cartes sont en vente au Bureau de distribution des cartes,
ministère des Mines et des Relevés techniques, Ottawa.

Building Bâtiment Intermittent stream Cours d'eau intermittent
Post office Bureau de poste Intermittent Lake Lac intermittent
Church Église Rapids; falls Rapides; chute
School École Marsh or Swamp Marais ou marécage
Astronomical monument Repère astronomique String bogs Marais en chapelet
R.C.M.P. Detachment Poste de la G.R.C. Icefield or Glacier Champ de glace ou glacier
Horizontal control point Point géodésique Tundra polygons Sols polygonaux
Landing ground Piste d'atterrissage Tundra ponds Étangs de toundra



WATTERSON LAKE
65G
EDITION 1

100,000 M. SQUARE IDENTIFICATION	
GRID ZONE DESIGNATION	14V
TO GIVE A REFERENCE TO NEAREST 1000 METRES	
EXAMPLE: RAPIDS	
SQUARE: Read letters of 100,000 m. square immediately to left of point	ND
Estimate tenths of a square from this line eastward to point	2
NORTHING: Read number on grid line immediately below point	8
Estimate tenths of a square from this line northward to point	28
MILITARY GRID REFERENCE (to nearest 1,000 metres)	03
If reporting beyond 10° in any direction, prefix Grid Zone Designation as:	ND2803

TEN THOUSAND METRE
UNIVERSAL TRANSVERSE MERCATOR GRID
ZONE 14

Reprint
5/2/66

65-G