

This document was produced
by scanning the original publication.
Ce document est le produit d'une
numérisation par balayage
de la publication originale.

66 J

1:250,000

CANADA

EDITION 1 (1977)

66 J

Refer to
this map as:
66 J
EDITION 1 ASE
SERIES A 502



100,000 M. SQUARE IDENTIFICATION	
GRID ZONE DESIGNATION	MKNK 740
14W	MJNJ 50

TO GIVE A REFERENCE TO NEAREST 1000 METRES

EXAMPLE: RAPIDS

SQUARE: Read letters of 100,000 m. square NK

EASTING: Read number on grid line immediately to left of point

Estimate tenths of a square from this line eastward to point.

NORTHING: Read number on grid line immediately below point

Estimate tenths of a square from this line northward to point.

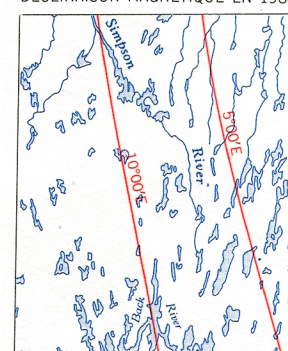
MILITARY GRID REFERENCE (to nearest 1,000 metres)

NK2501

If reporting beyond 18° in any direction, prefix Grid Zone Designation as: 14WNK2501

TEN THOUSAND METRE
UNIVERSAL TRANSVERSE MERCATOR GRID
ZONE 14

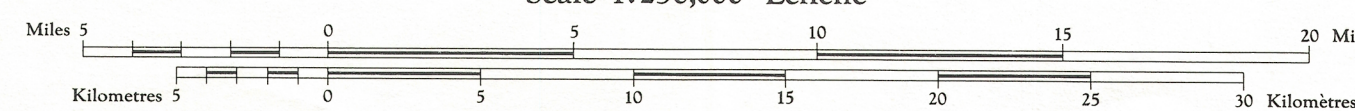
THE DECLINATION OF THE COMPASS NEEDLE 1964
DÉCLINAISON MAGNÉTIQUE EN 1964



The daily change of the North Magnetic Pole causes the magnetic compass to be very erratic in this area.
La variation diurne du pôle Nord magnétique affaiblit le compas magnétique dans cette région.

Produced by the ARMY SURVEY ESTABLISHMENT, R.C.E.
Information depicted current as of 1963. Printed 1964.
Copies may be obtained from the Map Distribution Office,
Department of Mines and Technical Surveys, Ottawa.
Interim corrections 1977

Roads:	Routes:
loose surface, all weather	less than 2 lanes
cart track, trail	more than 2 lanes
Spot elevation; precise, approximate	Point coté; précis, approximatif
Boundary monument	Borne-frontière
Pingo	Butte de terre
Depression contours	Courbes de coudette
Cliff or low relief	Falaise ou relief peu accentué
Esker	Esker



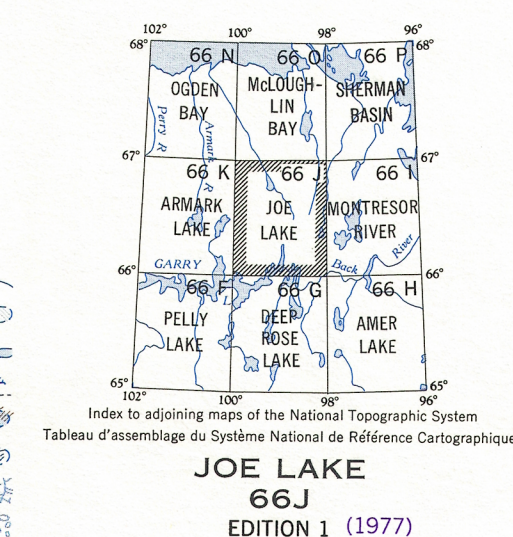
Transverse Mercator Projection
North American Datum 1927
Contour Interval 100 feet
Elevations in feet above Mean Sea Level

JOE LAKE
DISTRICT OF KEWATIN
NORTHWEST TERRITORIES
Scale 1:250,000 Échelle

Projection transverse de Mercator
Réseau géodésique nord-américain unifié 1927
Équidistance des courbes 100 pieds
Élévations en pieds au-dessus du niveau moyen de la mer

Publiée par le SERVICE TOPOGRAPHIQUE DE L'ARMÉE,
G.S.R.C., Renseignements à jour en 1963. Imprimé en 1964.
Ces cartes sont en vente au Bureau de distribution des cartes,
ministère des Mines et des Relevés techniques, Ottawa.
Corrections Provisoires, 1977

Building	Bâtiment	Intermittent stream	Cours d'eau intermittent
Post office	Bureau de poste	Intermittent lake	Lac intermittent
Church	Eglise	Rapids; falls	Rapides; chute
School	École	Marsh or Swamp	Marais ou marécage
Astronomical monument	Repère astronomique	String bog	Marais en chapelet
R.C.M.P. Detachment	Poste de la G.R.C.	Icefield or Glacier	Champ de glace ou glacier
Horizontal control point	Point géodésique	Tundra polygons	Soix polygonaux
Landing ground	Piste d'atterrissage	Tundra ponds	Étangs de toundra



Index to adjoining maps of the National Topographic System
Tableau d'assemblage du Système National de Référence Cartographique
JOE LAKE
66 J
EDITION 1 (1977)

66 J