

This document was produced
by scanning the original publication.
Ce document est le produit d'une
numérisation par balayage
de la publication originale.

75 E

1:250,000

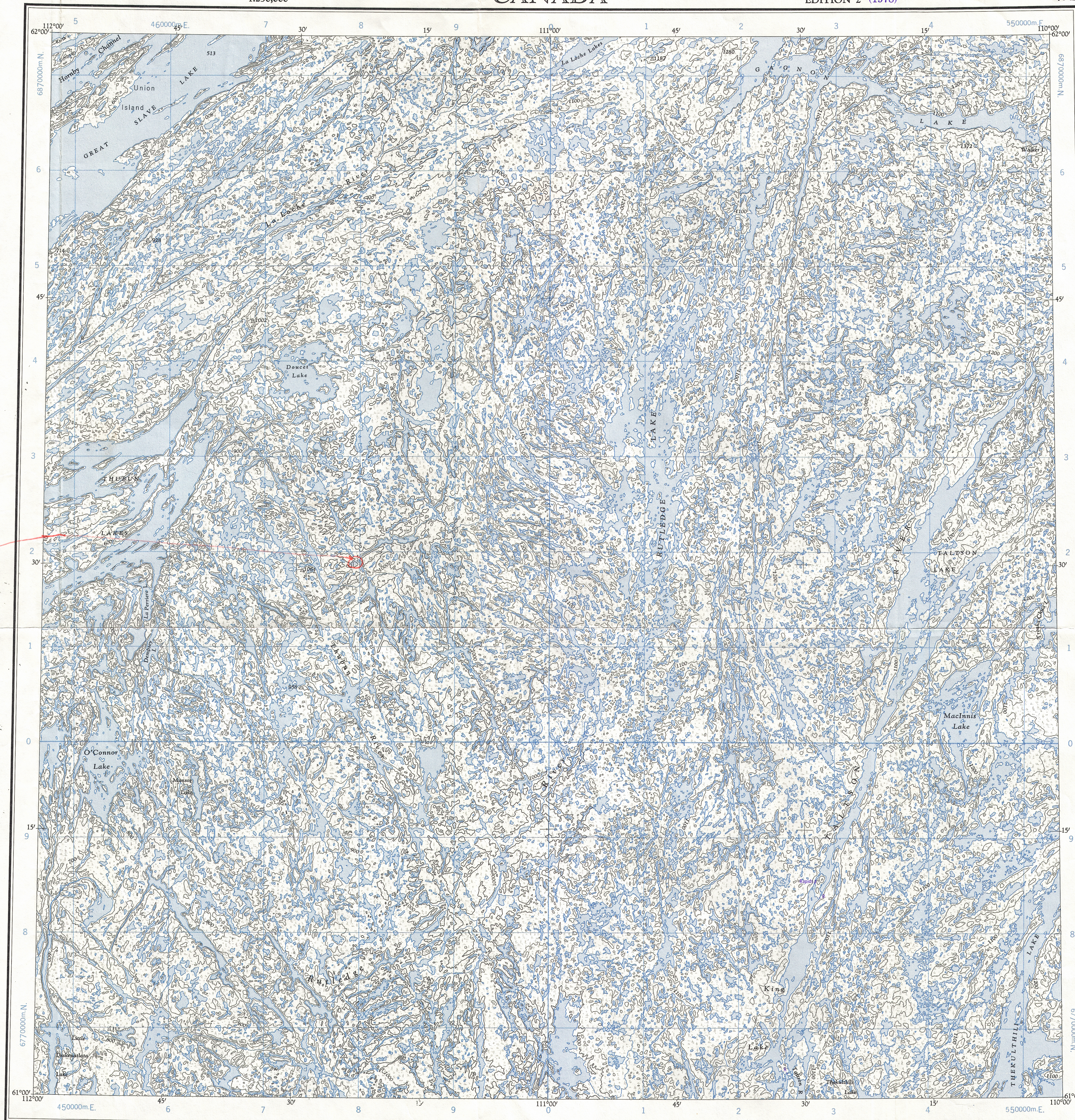
CANADA

EDITION 2 (1978)

75 E

Refer to
this map as:

75 E
EDITION 2 ASE
SERIES A 502



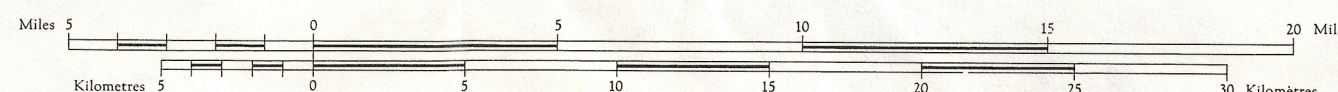
Compiled, 1960-61, by the SURVEYS AND MAPPING BRANCH,
DEPARTMENT OF MINES AND TECHNICAL SURVEYS,
from air photographs taken in 1955 and large scale maps.
Field surveys 1953-57. Printed 1962.
Overprinted 1978.
Copies may be obtained from the Map Distribution Office,
Department of Mines and Technical Surveys, Ottawa.

Transverse Mercator Projection
North American Datum 1927 (1956)
Contour Interval 100 feet
Elevations in feet above Mean Sea Level
Magnetic declination 30°30' East at centre of map 1962
Annual change (decreasing) 6'

TALTSON LAKE

NORTHWEST TERRITORIES
DISTRICT OF MACKENZIE

Scale 1:250,000 Échelle



PROVISIONAL MAP

Some names on this map are not yet official.
Corrections or additions are invited by the Surveys and Mapping Branch.

CARTE PROVISOIRE

Certains noms inscrits sur cette carte ne sont pas encore officiels. La Direction des levés et de la cartographie saurait gré au public de lui signaler corrections et additions.

Road, all weather.....Chemin, toute saison.....
Wagon or winter road.....Chemin de terre ou d'hiver.....
Trail or portage.....Sentier ou portage.....
Town.....Ville.....
Village or settlement.....Village ou hameau.....
Post office.....Bureau de poste.....
Building.....Bâtiment.....

Horizontal control point.....Point géodésique.....
Boundary monument.....Borne frontalière.....
Spot elevation, in feet.....Rapport de nivellement en pieds.....
Rapid; falls.....Rapides; chutes.....
Marsh or swamp.....Marais ou marécage.....
Depression contours.....Courbes de cuvette.....
Surveyed line.....Ligne arpentée.....

CONVERSION SCALE FOR ELEVATIONS

Feet
0 100 200 300 400 500 600 700 800 900 1000

Meters
0 100 200 300 400 500 600 700 800 900 1000

Use diagram only to obtain numerical values.
APPROXIMATE MEAN DECLINATION 1962
FOR CENTRE OF MAP
Annual change decreasing 6.0'

GRID ZONE DESIGNATION		100,000 M. SQUARE IDENTIFICATION							
12V	<table border="1"><tr><td></td><td>VD</td><td>WD</td></tr><tr><td>VC</td><td>WC</td><td></td></tr></table>		VD	WD	VC	WC		68	5
			VD	WD					
		VC	WC						
TO GIVE A REFERENCE TO NEAREST 1000 METRES									
EXAMPLE		STREAM JUNCTION							
SQUARE: Read letters of 100,000 m. square VD									
EASTING: Read number on grid line immediately to left of point.		9							
Estimate tenths of a square from this line eastward to point.			2						
			92						
NORTHING: Read number on grid line immediately below point.		2							
Estimate tenths of a square from this line northward to point.			3						
			23						
MILITARY GRID REFERENCE (to nearest 1,000 metres)		VD9223							
If reporting beyond 35° in any direction, prefix Grid Zone Designation as: 12VVD9223									

TEN THOUSAND METRE
UNIVERSAL TRANSVERSE MERCATOR GRID
ZONE 12

TOPOGRAPHICAL SURVEY DIRECTORATE

SERVICE TOPOGRAPHIQUE

DATE 23-2-81

Q.C. APPROVES RELEASE

C.Q. APPROUVE

75 E
EDITION 2 ASE (1978)

REPRINT